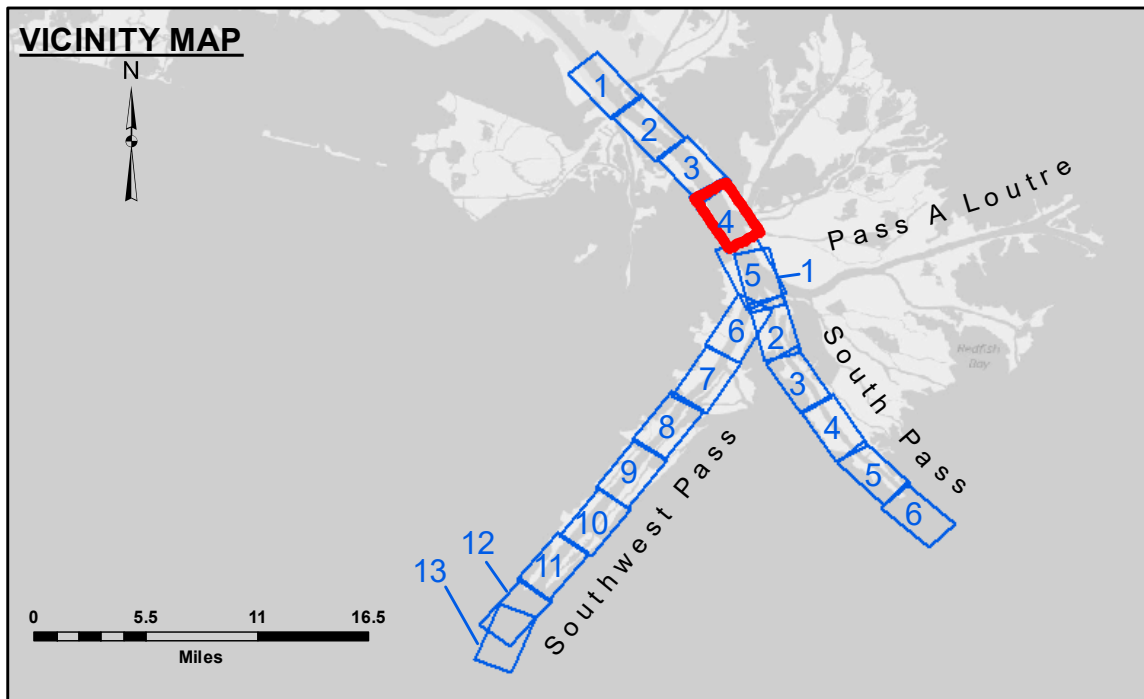


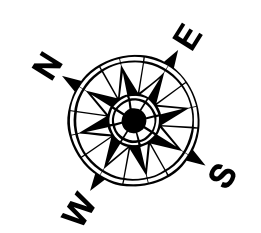
DREDGE NEWPORT  
DREDGING EAST HALF CHANNEL  
RG. 54 TO RG. 48

CUTTERHEAD DREDGE ROBERT M WHITE  
DREDGING WEST HALF CHANNEL FROM  
MILE 3.5 AHP TO MILE 1.5 BHP

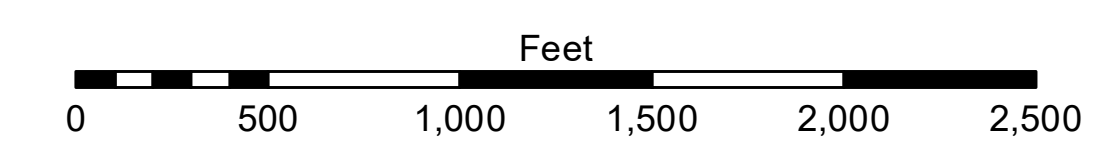


**LEGEND**

--- Federal Navigation Channel	○ Cable Area	□ Borrow Area	■ -10' and above
— Federal Navigation Center Line	□ Placement Area	● Shoalest Sounding**	■ -10' to -20'
— As-built Pipeline/Cable	□ Anchorage Area	★ Beacon, General	■ -20' to -30'
..... Unconfirmed Pipeline/Cable	⊗ Obstruction Point	◆ Red Navigation Buoy	■ -30' to -40'
— Project Depth Contour	⚓ Wrecks-Submerged	◆ Green Navigation Buoy	■ -40' to -45'
			■ -45' to -48.5'
			■ -48.5' to -55'
			■ -55' and below



Gage Reading: 2.1 MLLW @ PILOT TOWN @ 1450  
 Sea Conditions: CHOPPY SEAS  
 Vessel Name: BLANCHARD  
 Survey Type: CONDITION, SB  
 Sounding Frequency\*\*\*: LOW



**NOTES:**  
 Horizontal Coordinate System: North American Datum of 1983 (NAD83), projected to the State Plane Coordinate System (SPCS), Louisiana South Zone. Distance units in U.S. Survey Feet.  
 Vertical Datum: Soundings are shown in feet and indicate depths below Mean Lower Low Water (MLLW, 07-11). Datum Relationships for gage 01525 as of July 2015: 0.0' NAVD86 = -0.3' MLLW = 3.20' MLG  
 Distances on the Mississippi River, above and below Head of Passes are shown at 1 mile intervals.  
 The location of navigation aids are base on and provided by the U.S. Coast Guard.  
 2016 Aerial Photography data source: Precision Aerial Reconnaissance, LLC (1998 DOQQ in green)  
 Reference is N.O.A.A. Navigation Chart No. 11361.  
 \*\* Shoalest Sounding per Quarter per Reach.  
 \*\*\* High frequency (200 kHz) survey data represents the first signal return at a sounding location and will include suspended solids, known as "fluff", if present. Low frequency (24 kHz) survey data normally penetrates through this "fluff" layer to depict elevations of consolidated bottom material. Low frequency accuracies may vary depending on channel conditions and fathometer settings.



**DISCLAIMER:**  
 The data represents the results of data collection for a specific US Army Corps of Engineers project. The data is not intended for use in any other project. The user is responsible for the results of any application of the data for other than its intended purpose. The application of the data for other than its intended purpose is at the user's risk. The US Army Corps of Engineers does not accept any liability for damage or injury resulting from the use of the data for other than its intended purpose. The US Army Corps of Engineers does not accept any liability for damage or injury resulting from the use of the data for other than its intended purpose. The US Army Corps of Engineers does not accept any liability for damage or injury resulting from the use of the data for other than its intended purpose.

Submitted:	Surveyed By: JTB & DBD
Recommended:	Plotted By: RSL
Approved:	Checked By: MSK

U.S. ARMY CORPS OF ENGINEERS  
NEW ORLEANS DISTRICT

**MISSISSIPPI RIVER - B.R. TO GULF  
 SOUTHWEST PASS - SHEET 4  
 SW\_04\_SWP\_20180409\_CS  
 09 April 2018**

**Sheet Reference Number  
 4 of 13**

Revision Number:  
3.13-20160811