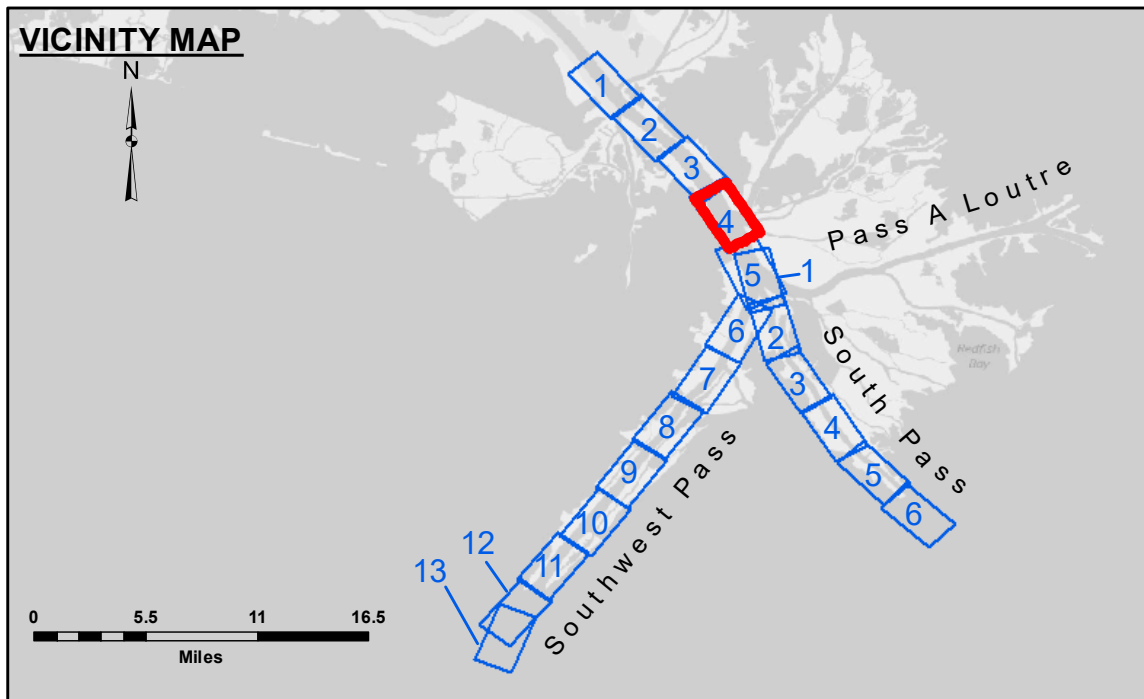


**DISCLAIMER:** The data represents the results of data collection for a specific US Army Corps of Engineers project. It is not intended for use in any other project. The user is responsible for the accuracy, completeness, and timeliness of the data. The Corps of Engineers does not warrant the accuracy of the data for any purpose other than that for which it was collected. The Corps of Engineers does not accept any liability for any damage or loss resulting from the use of the data. The Corps of Engineers does not accept any liability for any damage or loss resulting from the use of the data.

**ACCESS NOTES:** The United States Government furnishes these data and the recipient accepts and uses them with the express understanding that they are not to be used for any purpose other than that for which they were collected. The user is responsible for the accuracy, completeness, and timeliness of the data. The Corps of Engineers does not warrant the accuracy of the data for any purpose other than that for which it was collected. The Corps of Engineers does not accept any liability for any damage or loss resulting from the use of the data.

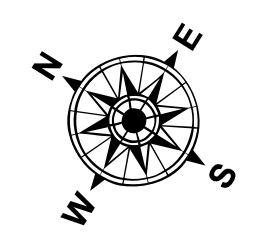
|  |                           |
|--|---------------------------|
| U.S. ARMY CORPS OF ENGINEERS<br>NEW ORLEANS DISTRICT |                           |
| Submitted:   | Surveyed By:<br>LLB & TDG |
| Recommended:   | Plotted By:<br>RSL        |
| Approved:  | Checked By:<br>MSK        |

**MISSISSIPPI RIVER - B.R. TO GULF  
SOUTHWEST PASS - SHEET 4  
SW\_04\_SWP\_20180410\_CS  
10 April 2018**

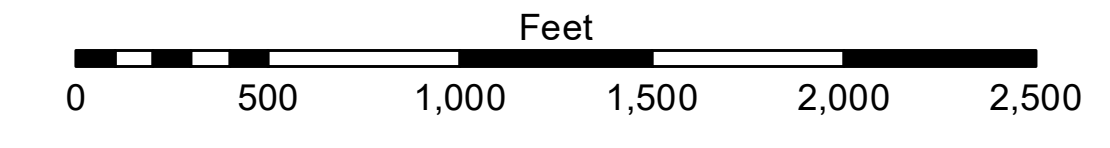


**LEGEND**

|                                  |                     |                         |                  |
|----------------------------------|---------------------|-------------------------|------------------|
| --- Federal Navigation Channel   | ○ Cable Area        | □ Borrow Area           | ■ -10' and above |
| — Federal Navigation Center Line | □ Placement Area    | ● Shoalest Sounding**   | ■ -10' to -20'   |
| — As-built Pipeline/Cable        | □ Anchorage Area    | ★ Beacon, General       | ■ -20' to -30'   |
| ..... Unconfirmed Pipeline/Cable | ⊗ Obstruction Point | ◆ Red Navigation Buoy   | ■ -30' to -40'   |
| — Project Depth Contour          | ⚓ Wrecks-Submerged  | ◆ Green Navigation Buoy | ■ -40' to -45'   |
|                                  |                     |                         | ■ -45' to -48.5' |
|                                  |                     |                         | ■ -48.5' to -55' |
|                                  |                     |                         | ■ -55' and below |



Gage Reading: 1.80 MLLW @ PILOT TOWN @ 1210  
 Sea Conditions: CALM  
 Vessel Name: JOHN BOPP  
 Survey Type: CONDITION, SB  
 Sounding Frequency\*\*\*: LOW



**NOTES:**  
 Horizontal Coordinate System: North American Datum of 1983 (NAD83), projected to the State Plane Coordinate System (SPCS), Louisiana South Zone. Distance units in U.S. Survey Feet.  
 Vertical Datum: Soundings are shown in feet and indicate depths below Mean Lower Low Water (MLLW, 07-11). Datum Relationships for gage 01525 as of July 2015: 0.0' NAVD83 = -0.3' MLLW = 3.20' MLG  
 Distances on the Mississippi River, above and below Head of Passes are shown at 1 mile intervals.  
 The location of navigation aids are base on and provided by the U.S. Coast Guard.  
 2016 Aerial Photography data source: Precision Aerial Reconnaissance, LLC (1998 DOQQ in green)  
 Reference is N.O.A.A. Navigation Chart No. 11361.  
 \*\* Shoalest Sounding per Quarter per Reach.  
 \*\*\* High frequency (200 kHz) survey data represents the first signal return at a sounding location and will include suspended solids, known as "fluff", if present. Low frequency (24 kHz) survey data normally penetrates through this "fluff" layer to depict elevations of consolidated bottom material. Low frequency accuracies may vary depending on channel conditions and fathometer settings.