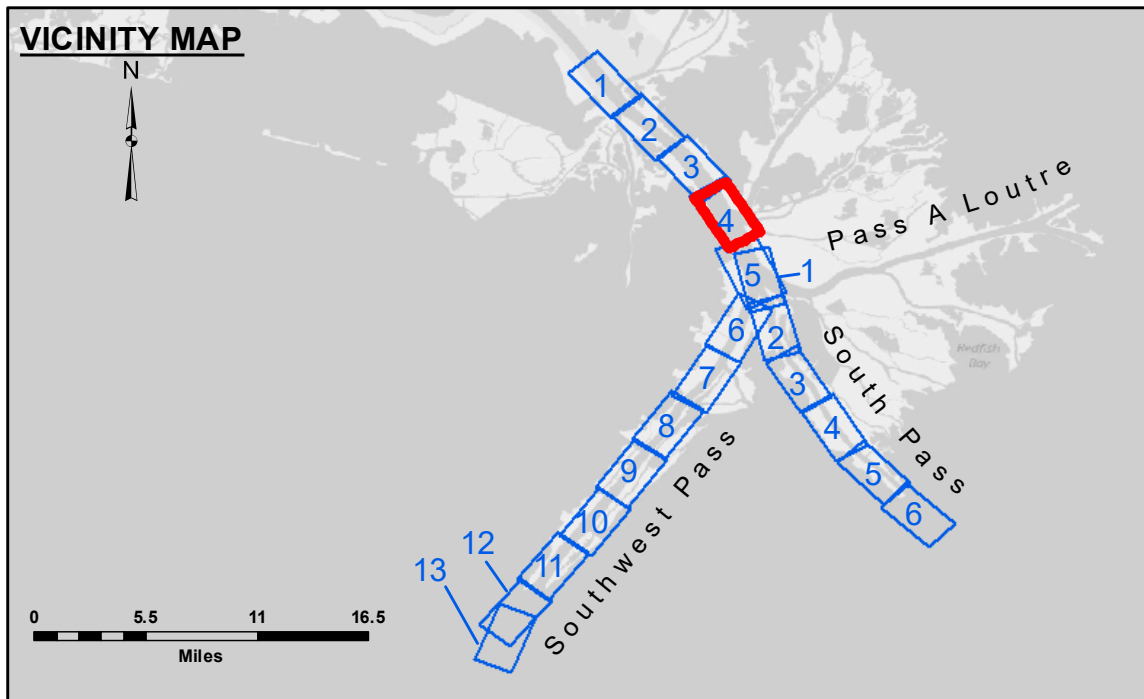


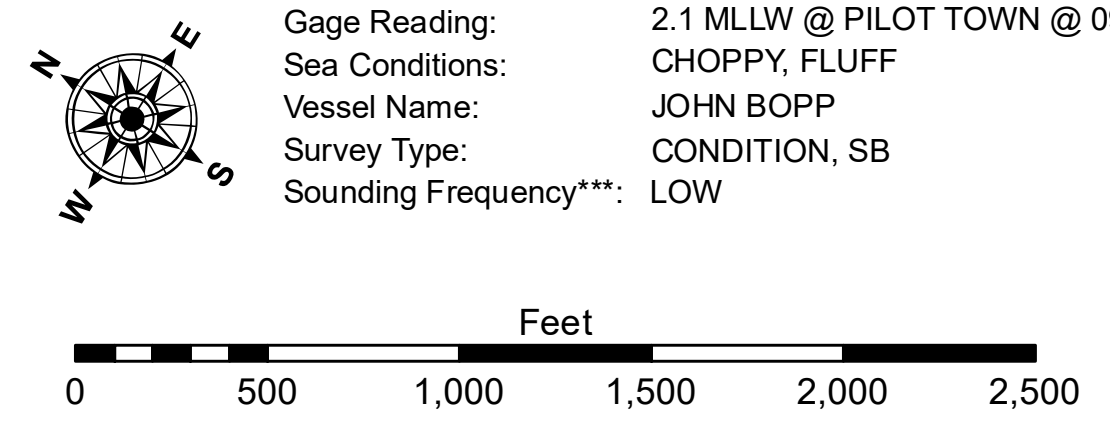
DREDGE WHEELER
DREDGING RANGE 59 TO RANGE 50
FULL CHANNEL WIDTH

CUTTERHEAD DREDGE ROBERT M. WHITE
DREDGING MILE 3.5 AHP TO MILE 1.5 BHP
WEST HALF OF THE CHANNEL

DREDGE BAYPORT
DREDGING RANGE 36 TO RANGE 33
200' EAST OF CENTERLINE & 50' WEST OF
CENTERLINE SHEETS 4 & 5



| LEGEND | | | |
|----------------------------------|---------------------|-------------------------|------------------|
| --- Federal Navigation Channel | ○ Cable Area | □ Borrow Area | ■ -10' and above |
| — Federal Navigation Center Line | □ Placement Area | ● Shoalest Sounding** | ■ -10' to -20' |
| — As-built Pipeline/Cable | □ Anchorage Area | ★ Beacon, General | ■ -20' to -30' |
| Unconfirmed Pipeline/Cable | ⊗ Obstruction Point | ◆ Red Navigation Buoy | ■ -30' to -40' |
| — Project Depth Contour | ⚓ Wrecks-Submerged | ◆ Green Navigation Buoy | ■ -40' to -45' |
| | | | ■ -45' to -48.5' |
| | | | ■ -48.5' to -55' |
| | | | ■ -55' and below |



NOTES:
Horizontal Coordinate System: North American Datum of 1983 (NAD83), projected to the State Plane Coordinate System (SPCS), Louisiana South Zone. Distance units in U.S. Survey Feet.
Vertical Datum: Soundings are shown in feet and indicate depths below Mean Lower Low Water (MLLW, 07-11). Datum Relationships for gage 01525 as of July 2015: 0.0' NAVD83 = -0.3' MLLW = 3.20' MLG
Distances on the Mississippi River, above and below Head of Passes are shown at 1 mile intervals.
The location of navigation aids are base on and provided by the U.S. Coast Guard.
2016 Aerial Photography data source: Precision Aerial Reconnaissance, LLC (1998 DOQQ in green)
Reference is N.O.A. Navigation Chart No. 11361.
** Shoalest Sounding per Quarter per Reach.
*** High frequency (200 kHz) survey data represents the first signal return at a sounding location and will include suspended solids, known as "fluff", if present. Low frequency (24 kHz) survey data normally penetrates through this "fluff" layer to depict elevations of consolidated bottom material. Low frequency accuracies may vary depending on channel conditions and fathometer settings.



DISTRIBUTION LIABILITY: The data represents the results of data collection/processing for a specific US Army Corps of Engineers project. It is only valid for the intended use, content, time and accuracy specifications. The user is responsible for the results and accuracy of the data for other than the intended purpose.
Data Constants: Hydrographic survey data is subject to change rapidly due to several factors including but not limited to dredging activities, channel migration, and changes in the hydrographical conditions which develop after the date of the survey. Prudent mariners should not rely solely upon it.

| U.S. ARMY CORPS OF ENGINEERS NEW ORLEANS DISTRICT | | |
|--|--------------------------------------|--------------------|
| Submitted: | Surveyed By: JH & TDG | Plotted By: TSS |
| Recommended: | Chief, Survey Section | Checked By: MSK |
| Approved: | Chief, Waterways Maintenance Section | |

**MISSISSIPPI RIVER - B.R. TO GULF
SOUTHWEST PASS - SHEET 4
SW_04_SWP_20180414_CS
14 April 2018**

**Sheet Reference Number
4 of 13**