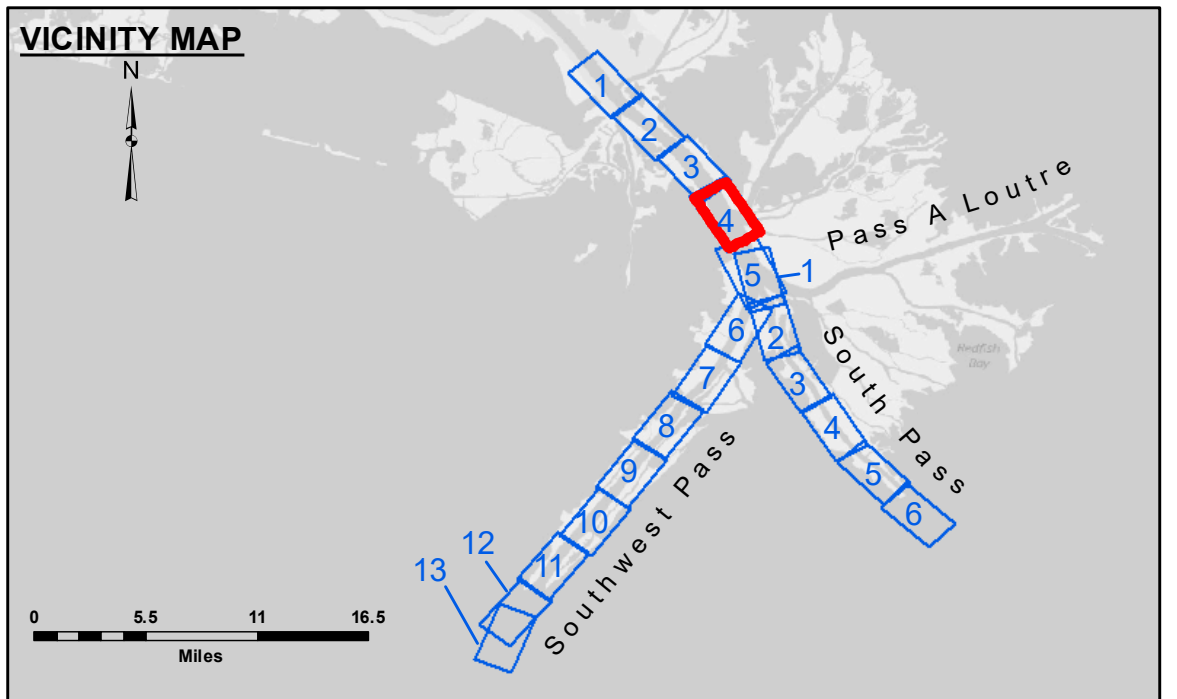


Accession: The United States Government furnishes these data and the recipient accepts and uses them with the express understanding that the data are not to be used for any purpose other than that for which they were originally collected, and that the data are not to be disseminated, copied, or in any way used for any purpose other than that for which they were originally collected. The user is responsible for the results of any use of the data. The user is not to be held liable for any damage or injury resulting from the use of the data. The user is not to be held liable for any damage or injury resulting from the use of the data.

Accession: The United States Government furnishes these data and the recipient accepts and uses them with the express understanding that the data are not to be used for any purpose other than that for which they were originally collected, and that the data are not to be disseminated, copied, or in any way used for any purpose other than that for which they were originally collected. The user is responsible for the results of any use of the data. The user is not to be held liable for any damage or injury resulting from the use of the data. The user is not to be held liable for any damage or injury resulting from the use of the data.

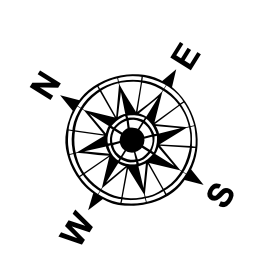
U.S. ARMY CORPS OF ENGINEERS NEW ORLEANS DISTRICT	
Submitted:	Surveyed By: HNP & TDG
Recommended: Chief Survey Section	Plotted By: TSS
Approved: Chief Waterways Maintenance Section	Checked By: MSK

**MISSISSIPPI RIVER - B.R. TO GULF
SOUTHWEST PASS - SHEET 4
SW_04_SWP_20180601_CS
01 June 2018**

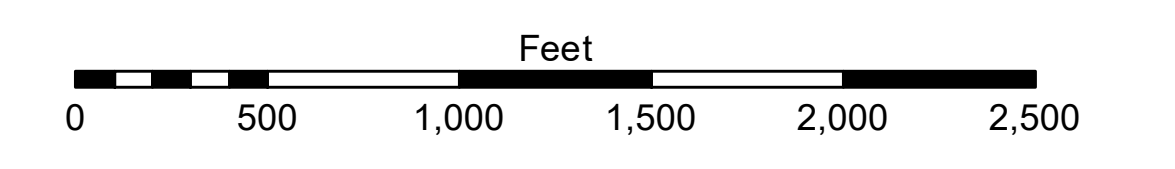


LEGEND

--- Federal Navigation Channel	○ Cable Area	□ Borrow Area	■ -10' and above
— Federal Navigation Center Line	□ Placement Area	● Shoalest Sounding**	■ -10' to -20'
— As-built Pipeline/Cable	□ Anchorage Area	☆ Beacon, General	■ -20' to -30'
..... Unconfirmed Pipeline/Cable	⊗ Obstruction Point	◆ Red Navigation Buoy	■ -30' to -40'
— Project Depth Contour	⚓ Wrecks-Submerged	◆ Green Navigation Buoy	■ -40' to -45'
			■ -45' to -48.5'
			■ -48.5' to -55'
			■ -55' and below



Gage Reading: 1.3 MLLW @ PILOT TOWN @ 0930
 Sea Conditions: CALM
 Vessel Name: JOHN BOPP
 Survey Type: CONDITION, SB
 Sounding Frequency***: LOW



NOTES:
 Horizontal Coordinate System: North American Datum of 1983 (NAD83), projected to the State Plane Coordinate System (SPCS), Louisiana South Zone. Distance units in U.S. Survey Feet.
 Vertical Datum: Soundings are shown in feet and indicate depths below Mean Lower Low Water (MLLW, 07-11). Datum Relationships for gage 01525 as of July 2015: 0.0' NAVD83 = -0.3' MLLW = 3.20' MLG
 Distances on the Mississippi River, above and below Head of Passes are shown at 1 mile intervals.
 The location of navigation aids are base on and provided by the U.S. Coast Guard.
 2016 Aerial Photography data source: Precision Aerial Reconnaissance, LLC (1998 DOQQ in green)
 Reference is N.O.A. Navigation Chart No. 11361.
 ** Shoalest Sounding per Quarter per Reach.
 *** High frequency (200 kHz) survey data represents the first signal return at a sounding and will include suspended solids, known as "fluff", if present. Low frequency (24 kHz) survey data normally penetrates through this "fluff" layer to depict elevations of consolidated bottom material. Low frequency accuracies may vary depending on channel conditions and fathometer settings.

**Sheet Reference Number
4 of 13**