

Distribution Liability: The data represents the results of data collection/processing for a specific US Army Corps of Engineers project. It is only valid for its intended use, content, time and accuracy specifications. The user is responsible for the results and interpretations. The user is responsible for the use of the data for other than its intended purpose.

Data Constants: Hydrographic survey data is subject to change rapidly due to several factors including but not limited to dredging, sedimentation, and changes in the bathymetry of the waterway. The user is responsible for the use of the data for other than its intended purpose.

Disclaimer: The information depicted on this map represents the results of a survey conducted on the date of the survey. It is not intended to represent the general condition existing at that time.

Access Constraints: The United States Government furnishes these data and the recipient accepts and uses them with the express understanding that they are not to be distributed, reproduced, or used for any purpose other than that for which they were provided, without the express written consent of the United States Government. These data are being made available to the public under no liability whatsoever to any person by reason of any use of these data. The user is responsible for the results of any use of these data. The user is responsible for the results of any use of these data. The user is responsible for the results of any use of these data.

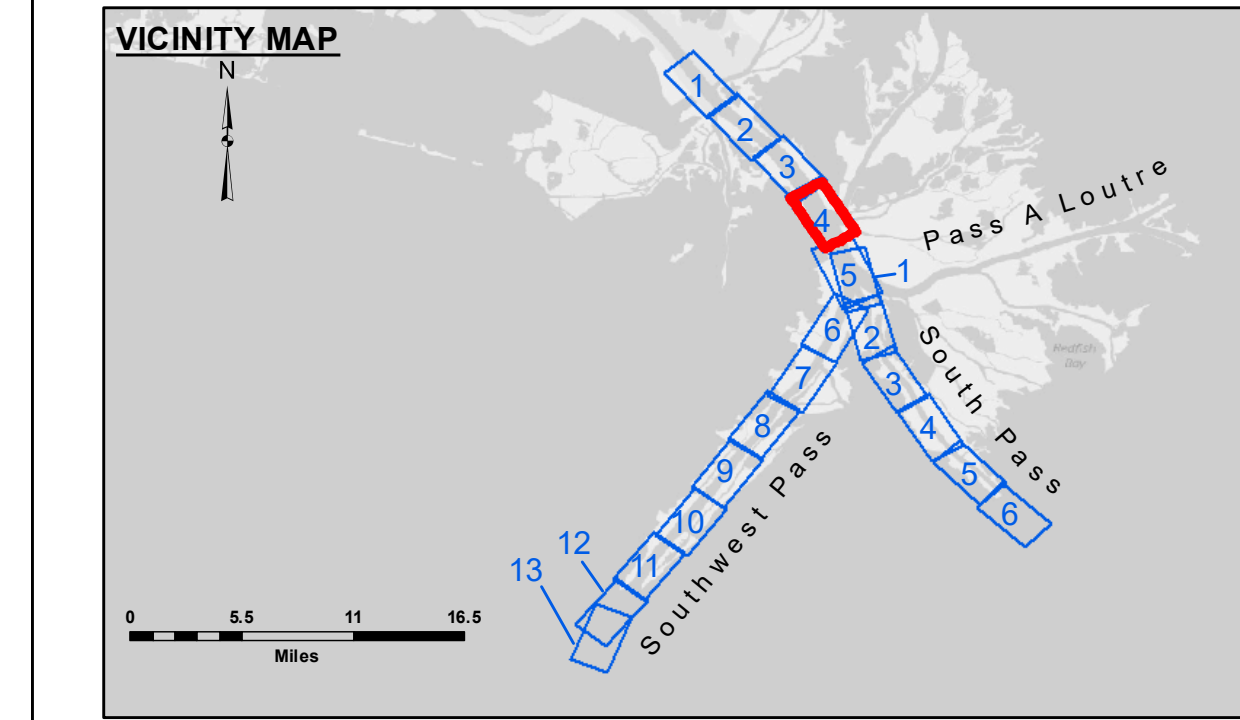
Submitted:	Surveyed By:	JTB & TDG
Recommended:	Plotted By:	TSS
Approved:	Checked By:	MSK

U.S. ARMY CORPS OF ENGINEERS
NEW ORLEANS DISTRICT

**MISSISSIPPI RIVER - B.R. TO GULF
SOUTHWEST PASS - SHEET 4
SW_04_SWP_20180608_CS
08 June 2018**

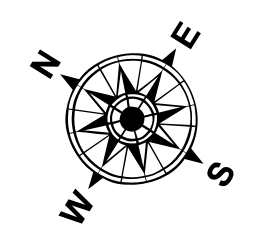
**Sheet Reference Number
4 of 13**

Revision Number:
1.13-20160811

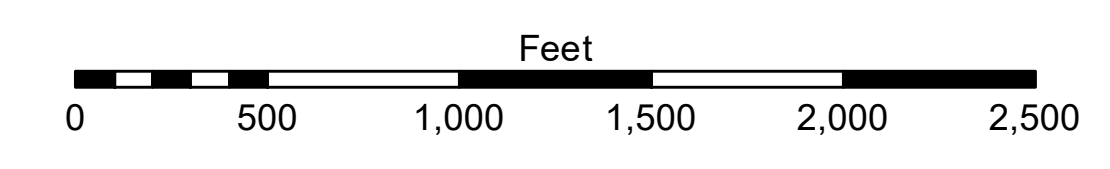


LEGEND	
--- Federal Navigation Channel	● Cable Area
— Federal Navigation Center Line	■ Placement Area
— As-built Pipeline/Cable	□ Anchorage Area
..... Unconfirmed Pipeline/Cable	⊗ Obstruction Point
— Project Depth Contour	★ Wrecks-Submerged
□ Borrow Area	★ Beacon, General
● Shoalest Sounding**	◆ Red Navigation Buoy
◆ Green Navigation Buoy	

■ -10' and above
■ -10' to -20'
■ -20' to -30'
■ -30' to -40'
■ -40' to -45'
■ -45' to -48.5'
■ -48.5' to -55'
■ -55' and below



Gage Reading: 0.9 MLLW @ PILOT TOWN @ 0845
Sea Conditions: CALM
Vessel Name: JOHN BOPP
Survey Type: CONDITION, SB
Sounding Frequency***: LOW



NOTES:
Horizontal Coordinate System: North American Datum of 1983 (NAD83), projected to the State Plane Coordinate System (SPCS), Louisiana South Zone. Distance units in U.S. Survey Feet.
Vertical Datum: Soundings are shown in feet and indicate depths below Mean Lower Low Water (MLLW, 07-11). Datum Relationships for gage 01525 as of July 2015: 0.0' NAVD83 = -0.3' MLLW = 3.20' MLG
Distances on the Mississippi River, above and below Head of Passes are shown at 1 mile intervals.
The location of navigation aids are base on and provided by the U.S. Coast Guard.
2016 Aerial Photography data source: Precision Aerial Reconnaissance, LLC (1998 DOQQ in green)
Reference is N.O.A. Navigation Chart No. 11361.
** Shoalest Sounding per Quarter per Reach.
*** High frequency (200 kHz) survey data represents the first signal return at a sounding and will include suspended solids, known as "fluff", if present. Low frequency (24 kHz) survey data normally penetrates through this "fluff" layer to depict elevations of consolidated bottom material. Low frequency accuracies may vary depending on channel conditions and fathometer settings.