

Distribution Liability: The data represents the results of data collection/processing for a specific US Army Corps of Engineers project. It is not intended for use in navigation or other safety-critical applications. The user is responsible for the accuracy and interpretation of the data. The Corps of Engineers does not accept responsibility for damages, injury, or death resulting from the use of this data for any purpose other than intended.

Data Constants: Hydrographic survey data is subject to change frequently due to several factors including but not limited to dredging and other channel maintenance activities. The Corps of Engineers does not guarantee the hydrographical conditions which develop after the date of the survey. Prudent mariners should not rely solely on this chart.

Access Constraints: This information is available to the general public through the National Waterway Information System (NWIS). The information depicted on the map represents the results of a survey conducted in 2018. This information is provided for informational purposes only and is not intended to represent the general condition existing at that time.

Scale: As Shown

MISSION STATEMENT: U.S. ARMY CORPS OF ENGINEERS NEW ORLEANS DISTRICT

Submitted:	Surveyed By:
Recommended:	Plotted By:
Approved:	Checked By:

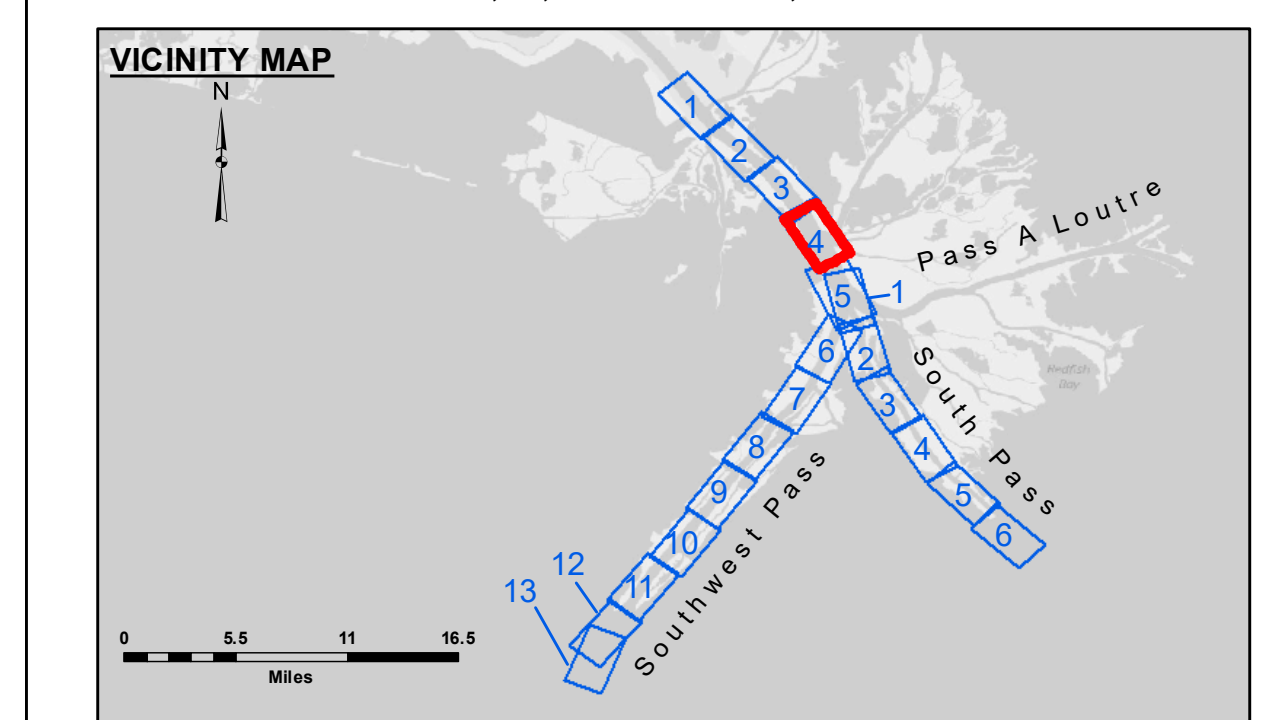
Submitted: JH & TDG
Plotted By: RSL
Checked By: MSK

Chief, Survey Section
Chief, Waterways Maintenance Section

**MISSISSIPPI RIVER - B.R. TO GULF
SOUTHWEST PASS - SHEET 4
SW_04_SWP_20180912_CS
12 September 2018**

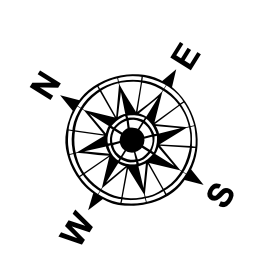
**Sheet Reference Number
4 of 13**

Revision Number: 3.13-20160811

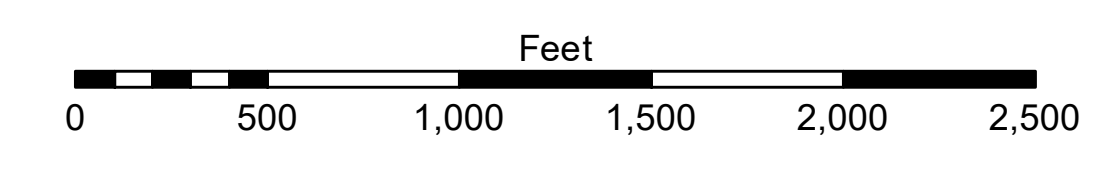


LEGEND

- Federal Navigation Channel
- Federal Navigation Center Line
- Unconfirmed Pipeline/Cable
- Project Depth Contour
- Cable Area
- Placement Area
- Anchorage Area
- Obstruction Point
- Wrecks-Submerged
- Borrow Area
- Shoalest Sounding**
- Beacon, General
- Red Navigation Buoy
- Green Navigation Buoy
- 10' and above
- 10' to -20'
- 20' to -30'
- 30' to -40'
- 40' to -45'
- 45' to -48.5'
- 48.5' to -55'
- 55' and below



Gage Reading: 0.8 MLLW @ PILOT TOWN @ 0945
 Sea Conditions: CALM, BUFFF
 Vessel Name: JOHN BOPP
 Survey Type: CONDITION, SB
 Sounding Frequency***: LOW



NOTES:
 Horizontal Coordinate System: North American Datum of 1983 (NAD83), projected to the State Plane Coordinate System (SPCS), Louisiana South Zone. Distance units in U.S. Survey Feet.
 Vertical Datum: Soundings are shown in feet and indicate depths below Mean Lower Low Water (MLLW, 07-11). Datum Relationships for gage 01525 as of July 2015:
 0.0' NAVD83 = -0.3' MLLW = 3.20' MLG
 Distances on the Mississippi River, above and below Head of Passes are shown at 1 mile intervals.
 The location of navigation aids are base on and provided by the U.S. Coast Guard.
 2016 Aerial Photography data source: Precision Aerial Reconnaissance, LLC (1998 DOQQ in green)
 Reference is N.O.A. Navigation Chart No. 11361.
 ** Shoalest Sounding per Quarter per Reach.
 *** High frequency (200 kHz) survey data represents the first signal return at a sounding location and will include suspended solids, known as "fluff", if present. Low frequency (24 kHz) survey data normally penetrates through this "fluff" layer to depict elevations of consolidated bottom material. Low frequency accuracies may vary depending on channel conditions and fathometer settings.