

Distribution Liability: The data represents the results of data collection/processing for a specific US Army Corps of Engineers project. It is only valid for its intended use, content, time and accuracy specifications. The user is responsible for the results and interpretations. The user is responsible for the use of the data for other than its intended purpose.

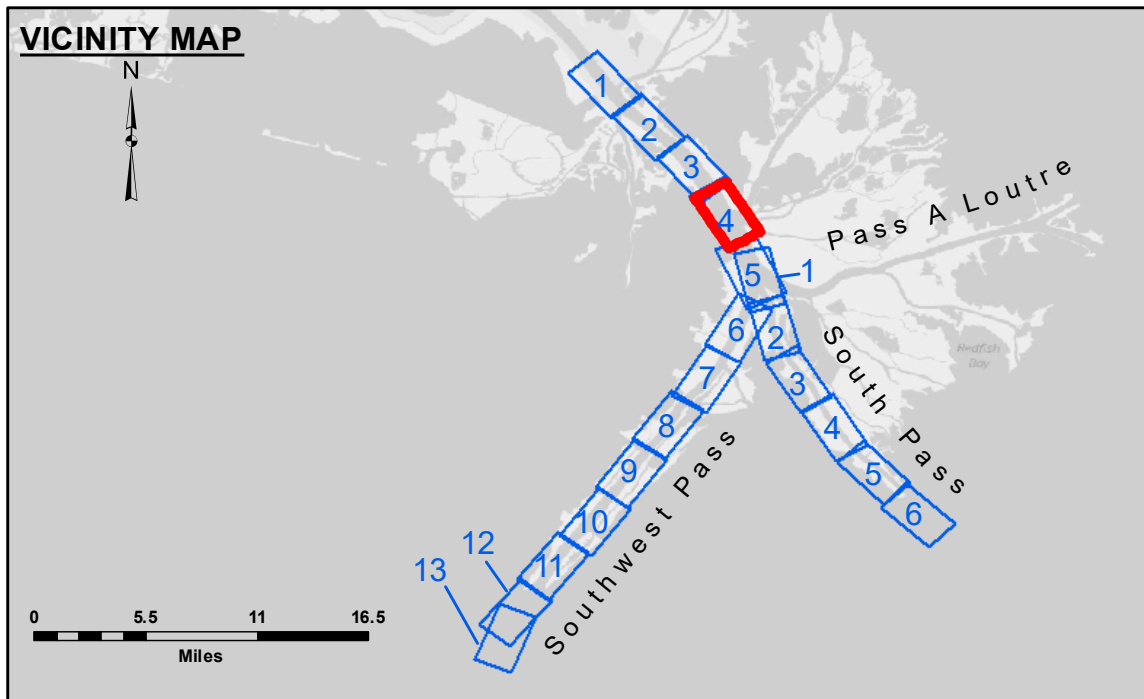
Data Constants: Hydrographic survey data is subject to change rapidly due to several factors including but not limited to dredging, sedimentation, and channel migration. The user is responsible for the use of the data for other than its intended purpose. The user is responsible for the use of the data for other than its intended purpose.

Disclaimer: The information depicted on the map represents the results of a survey and is not intended to be used for navigation. The user is responsible for the use of the data for other than its intended purpose. The user is responsible for the use of the data for other than its intended purpose.

Access: The United States Government furnishes these data and the recipient acquires and uses them with the express understanding that they are not to be distributed, reproduced, or used for any purpose other than that for which they were provided, without the express written permission of the United States Government. The recipient may not transfer these data to others without also obtaining the permission of the United States Government.

U.S. ARMY CORPS OF ENGINEERS NEW ORLEANS DISTRICT		
Submitted:	Surveyed By: LLE/SJR/JTB & TDG	Checked By: MSK
Recommended:	Plotted By: TSS	
Approved:	Chart Survey Section	Chart Waterways Maintenance Section

**MISSISSIPPI RIVER - B.R. TO GULF
SOUTHWEST PASS - SHEET 4
SW_04_SWP_20180920_CS_PTA
20 September 2018**

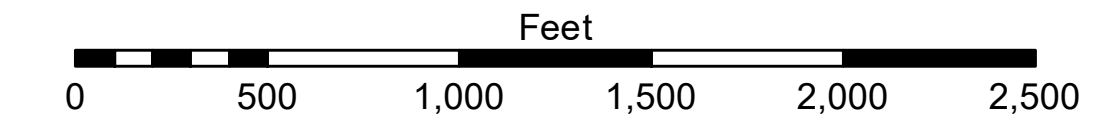


LEGEND

- Federal Navigation Channel
- Federal Navigation Center Line
- As-built Pipeline/Cable
- Unconfirmed Pipeline/Cable
- Project Depth Contour
- Cable Area
- Placement Area
- Anchorage Area
- ⊗ Obstruction Point
- ✶ Wrecks-Submerged
- Borrow Area
- Shoalest Sounding**
- ★ Beacon, General
- ◆ Red Navigation Buoy
- ◆ Green Navigation Buoy
- -10' and above
- -10' to -20'
- -20' to -30'
- -30' to -40'
- -40' to -45'
- -45' to -48.5'
- -48.5' to -55'
- -55' and below



Gage Reading: 1.6 MLLW @ PILOT TOWN @ 1225
 Sea Conditions: CALM
 Vessel Name: TECHE
 Survey Type: CONDITION, SB
 Sounding Frequency***: LOW



NOTES:
 Horizontal Coordinate System: North American Datum of 1983 (NAD83), projected to the State Plane Coordinate System (SPCS), Louisiana South Zone. Distance units in U.S. Survey Feet.
 Vertical Datum: Soundings are shown in feet and indicate depths below Mean Lower Low Water (MLLW, 07-11). Datum Relationships for gage 01525 as of July 2015: 0.0' NAVD86 = -0.3' MLLW = 3.20' MLG
 Distances on the Mississippi River, above and below Head of Passes are shown at 1 mile intervals.
 The location of navigation aids are base on and provided by the U.S. Coast Guard.
 2016 Aerial Photography data source: Precision Aerial Reconnaissance, LLC (1998 DOQQ in green)
 Reference is N.O.A. Navigation Chart No. 11361.
 ** Shoalest Sounding per Quarter per Reach.
 *** High frequency (200 kHz) survey data represents the first signal return at a sounding location and will include suspended solids, known as "fluff", if present. Low frequency (24 kHz) survey data normally penetrates through this "fluff" layer to depict elevations of consolidated bottom material. Low frequency accuracies may vary depending on channel conditions and fathometer settings.

**Sheet Reference Number
4 of 13**

Revision Number:
3.13-20160811