

**Distribution Liability:** The data represents the results of data collection/processing for a specific US Army Corps of Engineers project. It is only valid for its intended use, content, time and accuracy specifications. The user is responsible for the results. The user must determine the appropriateness of the data for their intended purpose.

**Data:** Hydrographic survey data is subject to change rapidly due to several factors including but not limited to dredging, sedimentation, and changes in channel conditions. The user must determine the appropriateness of the data for their intended purpose. The information depicted on the map represents the results of a survey conducted at the time the data was collected. It is not intended to represent the general condition existing at that time.

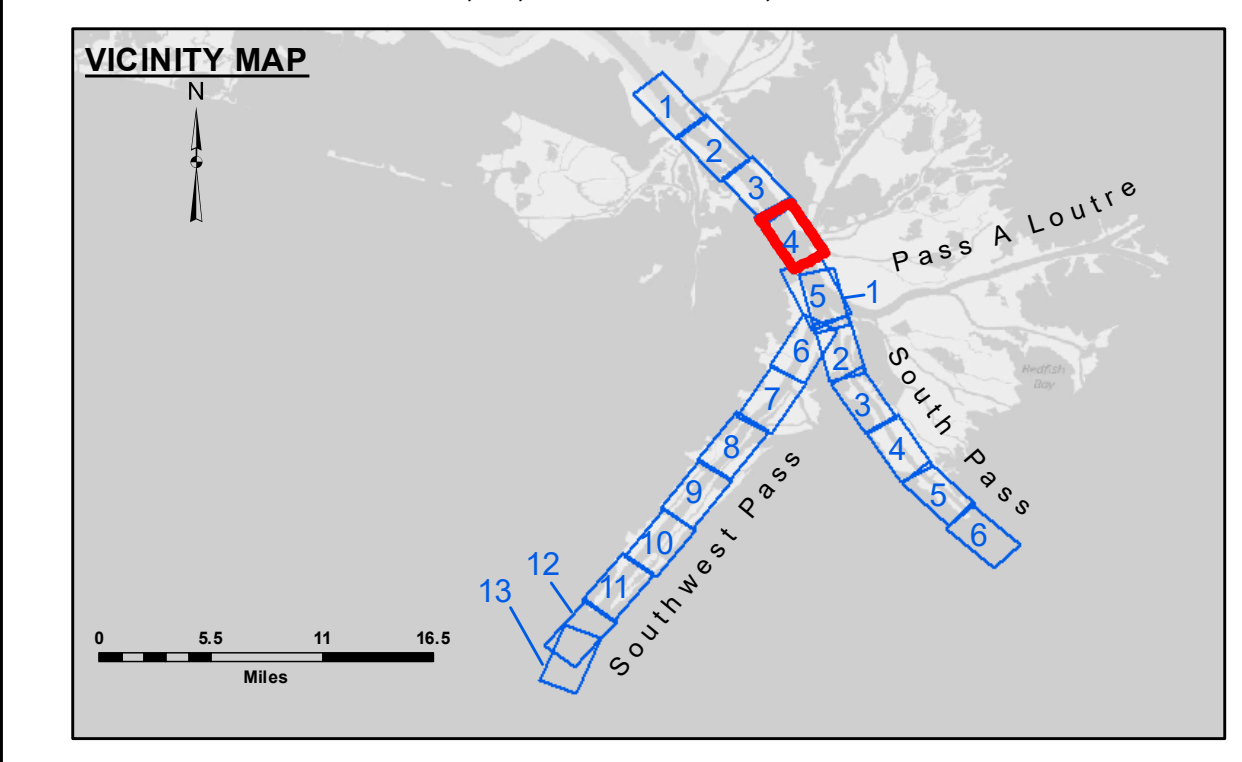
**Access:** The United States Government furnishes these data and the recipient accepts and uses them with the express understanding that they are not to be distributed, reproduced, or implied concerning the accuracy, completeness, reliability, usability, or suitability for any particular purpose of the user. The user must determine the appropriateness of the data for their intended purpose. The user must determine the appropriateness of the data for their intended purpose. The user must determine the appropriateness of the data for their intended purpose.

Submitted:	Surveyed By: JTB & MGF
Recommended:	Plotted By: TSS
Approved:	Checked By: MSK

U.S. ARMY CORPS OF ENGINEERS  
NEW ORLEANS DISTRICT

**MISSISSIPPI RIVER - B.R. TO GULF  
SOUTHWEST PASS - SHEET 4  
SW\_04\_SWP\_20181121\_CS  
21 November 2018**

**Sheet Reference Number  
4 of 13**



**LEGEND**

--- Federal Navigation Channel	○ Cable Area	□ Borrow Area	■ -10' and above
— Federal Navigation Center Line	□ Placement Area	● Shoalest Sounding**	■ -10' to -20'
— As-built Pipeline/Cable	□ Anchorage Area	★ Beacon, General	■ -20' to -30'
..... Unconfirmed Pipeline/Cable	⊗ Obstruction Point	◆ Red Navigation Buoy	■ -30' to -40'
— Project Depth Contour	⚓ Wrecks-Submerged	◆ Green Navigation Buoy	■ -40' to -45'
			■ -45' to -48.5'
			■ -48.5' to -55'
			■ -55' and below

**Gage Reading:** 1.2 MLLW @ PILOT TOWN @ 0920

**Sea Conditions:** CHOPPY

**Vessel Name:** BLANCHARD

**Survey Type:** CONDITION, SB

**Sounding Frequency\*\*\*:** LOW

**Vertical Datum:** North American Datum of 1983 (NAD83), projected to the State Plane Coordinate System (SPCS), Louisiana South Zone. Distance units in U.S. Survey Feet.

**Datum Relationships for gage 01525 as of July 2015:**  
0.0' NAVD83 = -0.3' MLLW = 3.20' MLG

Distances on the Mississippi River, above and below Head of Passes are shown at 1 mile intervals.

The location of navigation aids are base on and provided by the U.S. Coast Guard.

2016 Aerial Photography data source: Precision Aerial Reconnaissance, LLC (1998 DOQQ in green)

Reference is N.O.A. Navigation Chart No. 11361.

\*\* Shoalest Sounding per Quarter Per Reach.

\*\*\* High frequency (200 kHz) survey data represents the first signal return at a sounding location and will include suspended solids, known as "fluff", if present. Low frequency (24 kHz) survey data normally penetrates through this "fluff" layer to depict elevations of consolidated bottom material. Low frequency accuracies may vary depending on channel conditions and fathometer settings.