

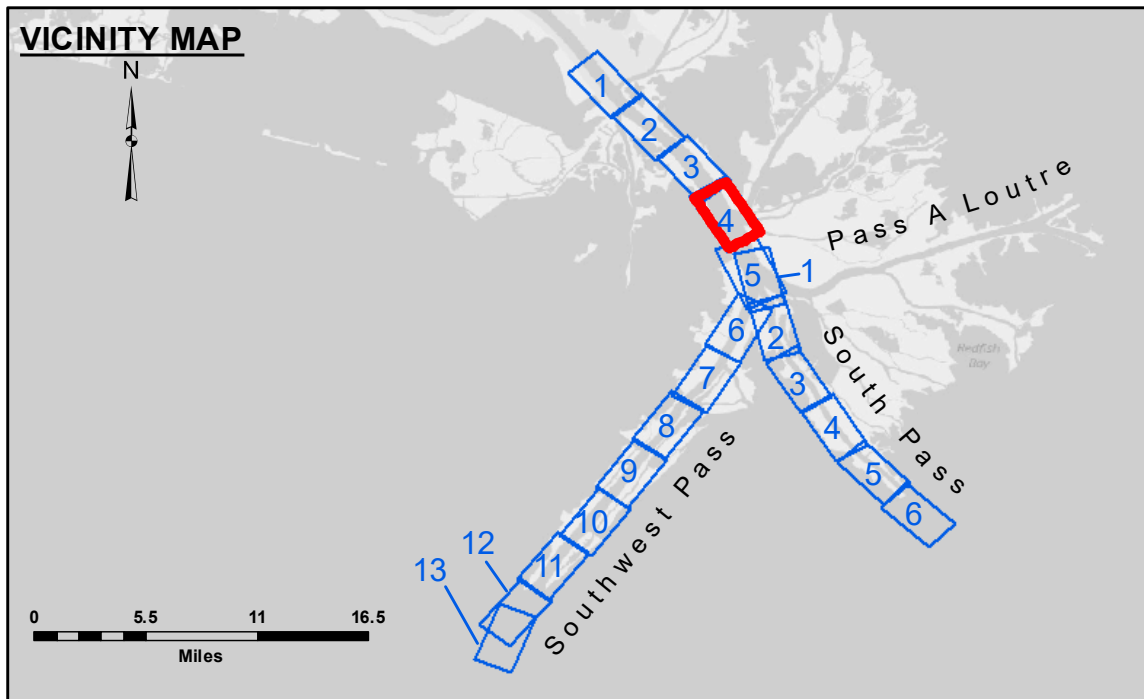
Distribution Liability: The data represents the results of data collection/processing for a specific US Army Corps of Engineers project. It is only valid for the intended use, content, time and accuracy specifications. The user is responsible for the results. The user must determine the applicability of the data for other than the intended purpose.

Data Constraints: Hydrographic survey data is subject to change rapidly due to several factors including but not limited to dredging operations, channel migration, and changes in bathymetry. The user must determine the applicability of the data for other than the intended purpose.

Disclaimer: The information depicted on the map represents the results of a survey conducted under contract to the U.S. Army Corps of Engineers. The Corps of Engineers does not warrant the accuracy of the information. The user is responsible for the results of the information. The Corps of Engineers is not responsible for any damage or injury resulting from the use of the information.

U.S. ARMY CORPS OF ENGINEERS NEW ORLEANS DISTRICT	
Submitted:	Surveyed By: JTB & DBD
Recommended: Chart Survey Section	Plotted By: TSS
Approved: Chart Waterways Maintenance Section	Checked By: MSK

**MISSISSIPPI RIVER - B.R. TO GULF
SOUTHWEST PASS - SHEET 4
SW_04_SWP_20190116_CS
16 January 2019**

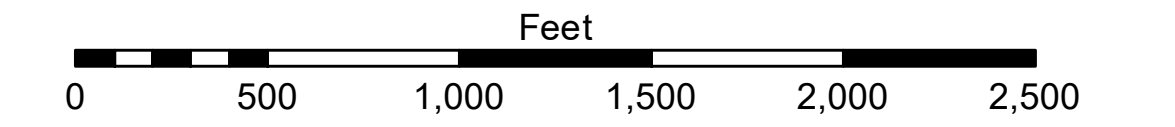


LEGEND

--- Federal Navigation Channel	● Cable Area	□ Borrow Area	■ -10' and above
— Federal Navigation Center Line	□ Placement Area	● Shoalest Sounding**	■ -10' to -20'
— As-built Pipeline/Cable	□ Anchorage Area	★ Beacon, General	■ -20' to -30'
..... Unconfirmed Pipeline/Cable	⊗ Obstruction Point	◆ Red Navigation Buoy	■ -30' to -40'
— Project Depth Contour	⚓ Wrecks-Submerged	◆ Green Navigation Buoy	■ -40' to -45'
			■ -45' to -48.5'
			■ -48.5' to -55'
			■ -55' and below



Gage Reading: 1.7 MLLW @ PILOT TOWN @ 1030
 Sea Conditions: CHOPPY
 Bessel Name: BLANCHARD
 Survey Type: CONDITION, SB
 Sounding Frequency***: LOW



NOTES:
 Horizontal Coordinate System: North American Datum of 1983 (NAD83), projected to the State Plane Coordinate System (SPCS), Louisiana South Zone. Distance units in U.S. Survey Feet.
 Vertical Datum: Soundings are shown in feet and indicate depths below Mean Lower Low Water (MLLW, 07-11). Datum Relationships for gage 01525 as of July 2015: 0.0' NAVD83 = -0.3' MLLW = 3.20' MLG
 Distances on the Mississippi River, above and below Head of Passes are shown at 1 mile intervals.
 The location of navigation aids are base on and provided by the U.S. Coast Guard.
 2016 Aerial Photography data source: Precision Aerial Reconnaissance, LLC (1998 DOQQ in green)
 Reference is N.O.A. Navigation Chart No. 11361.
 ** Shoalest Sounding per Quarter per Reach.
 *** High frequency (200 kHz) survey data represents the first signal return at a sounding and will include suspended solids, known as "fluff", if present. Low frequency (24 kHz) survey data normally penetrates through this "fluff" layer to depict elevations of consolidated bottom material. Low frequency accuracies may vary depending on channel conditions and fathometer settings.

**Sheet Reference Number
4 of 13**