

**Distribution Liability:** The data represents the results of data collection/processing for a specific US Army Corps of Engineers project. It is only valid for its intended use, content, time and accuracy specifications. The user is responsible for the results and any application of the data for other than its intended purpose.

**Data Constants:** Hydrographic survey data is subject to change rapidly due to several factors including but not limited to dredging activities, channel migration, and changes in the hydrographical conditions which develop after the date of the survey. The user is responsible for the results of the data and is advised to consult the Hydrographic Survey Manual for more information.

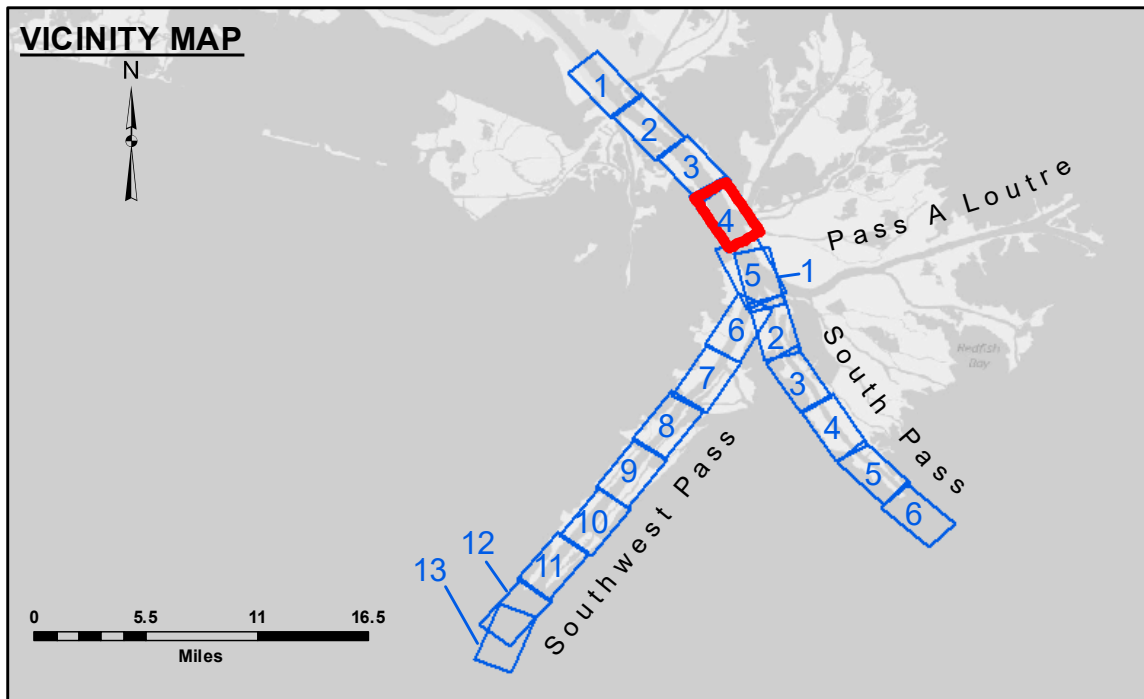
**Access:** The United States Government furnishes these data and the recipient accepts and uses them with the express understanding that the data are not to be used for any purpose other than that for which they were collected, expressed, or implied concerning the accuracy, completeness, reliability, usability, or availability for any particular purpose of the user. The user is responsible for the results and any application of the data for other than its intended purpose.

**Disclaimer:** The information depicted on the map represents the results of a survey. The user is responsible for the results of the data and is advised to consult the Hydrographic Survey Manual for more information.

U.S. ARMY CORPS OF ENGINEERS NEW ORLEANS DISTRICT	
Submitted:	JH & MGF
Recommended:	RSL
Checked By:	MSK
Approved:	Chief, Waterways Maintenance Section

**MISSISSIPPI RIVER - B.R. TO GULF  
SOUTHWEST PASS - SHEET 4  
SW\_04\_SWP\_20190414\_CS  
14 April 2019**

**Sheet Reference Number  
4 of 13**



LEGEND	
--- Federal Navigation Channel	● Cable Area
— Federal Navigation Center Line	■ Placement Area
— As-built Pipeline/Cable	□ Anchorage Area
..... Unconfirmed Pipeline/Cable	⊗ Obstruction Point
— Project Depth Contour	★ Wrecks-Submerged
□ Borrow Area	★ Beacon, General
● Shoalest Sounding**	◆ Red Navigation Buoy
★ Beacon, General	◆ Green Navigation Buoy

**NOTES:**

Horizontal Coordinate System:  
North American Datum of 1983 (NAD83), projected to the State Plane Coordinate System (SPCS), Louisiana South Zone. Distance units in U.S. Survey Feet.

Vertical Datum:  
Soundings are shown in feet and indicate depths below Mean Lower Low Water (MLLW, 07-11). Datum Relationships for gage 01525 as of July 2015:  
0.0' NAVD88 = -0.3' MLLW = 3.20' MLG

Distances on the Mississippi River, above and below Head of Passes are shown at 1 mile intervals.

The location of navigation aids are base on and provided by the U.S. Coast Guard.

2016 Aerial Photography data source: Precision Aerial Reconnaissance, LLC (1998 DOQQ in green)

Reference is N.O.A. Navigation Chart No. 11361.

\*\* Shoalest Sounding per Quarter per Reach.

\*\*\* High frequency (200 kHz) survey data represents the first signal return at a sounding location and will include suspended solids, known as "fluff", if present. Low frequency (24 kHz) survey data normally penetrates through this "fluff" layer to depict elevations of consolidated bottom material. Low frequency accuracies may vary depending on channel conditions and fathometer settings.

Gage Reading: 2.3 MLLW @ PILOT TOWN @ 1320  
Sea Conditions: CHOPPY  
Vessel Name: BEAVALS  
Survey Type: CONDITION, SB  
Sounding Frequency\*\*\*: LOW