



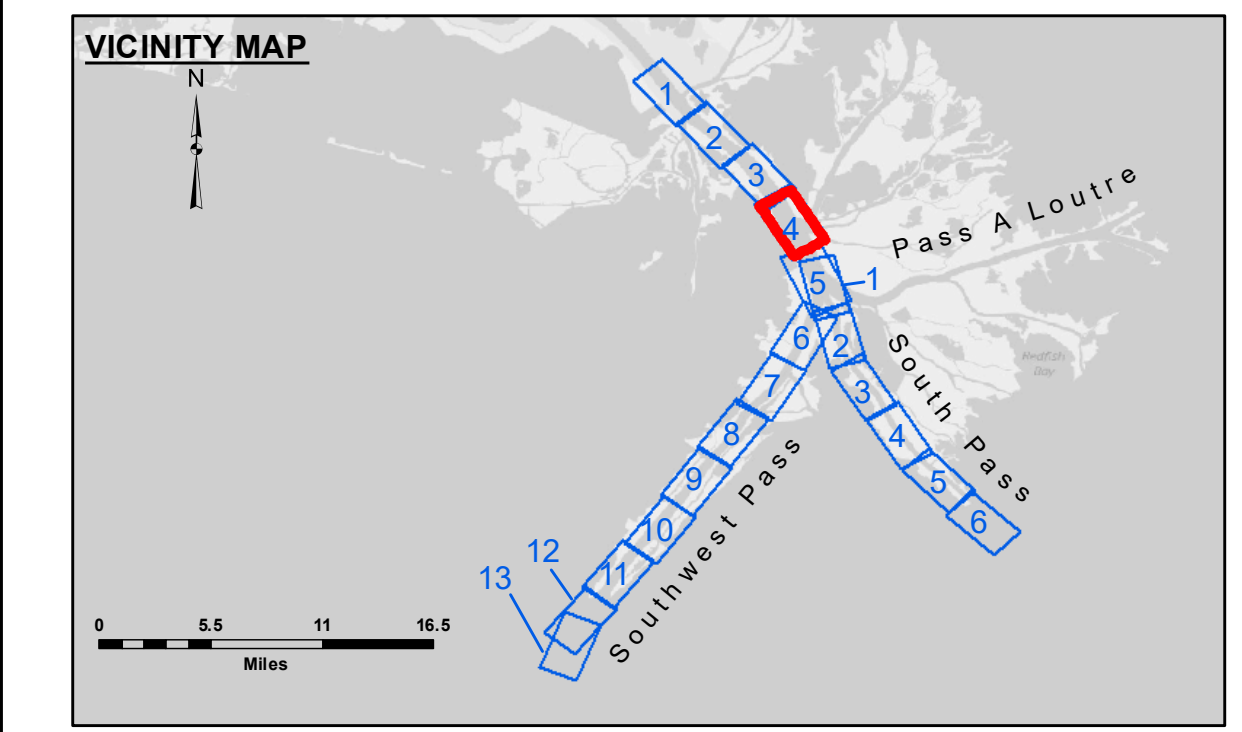
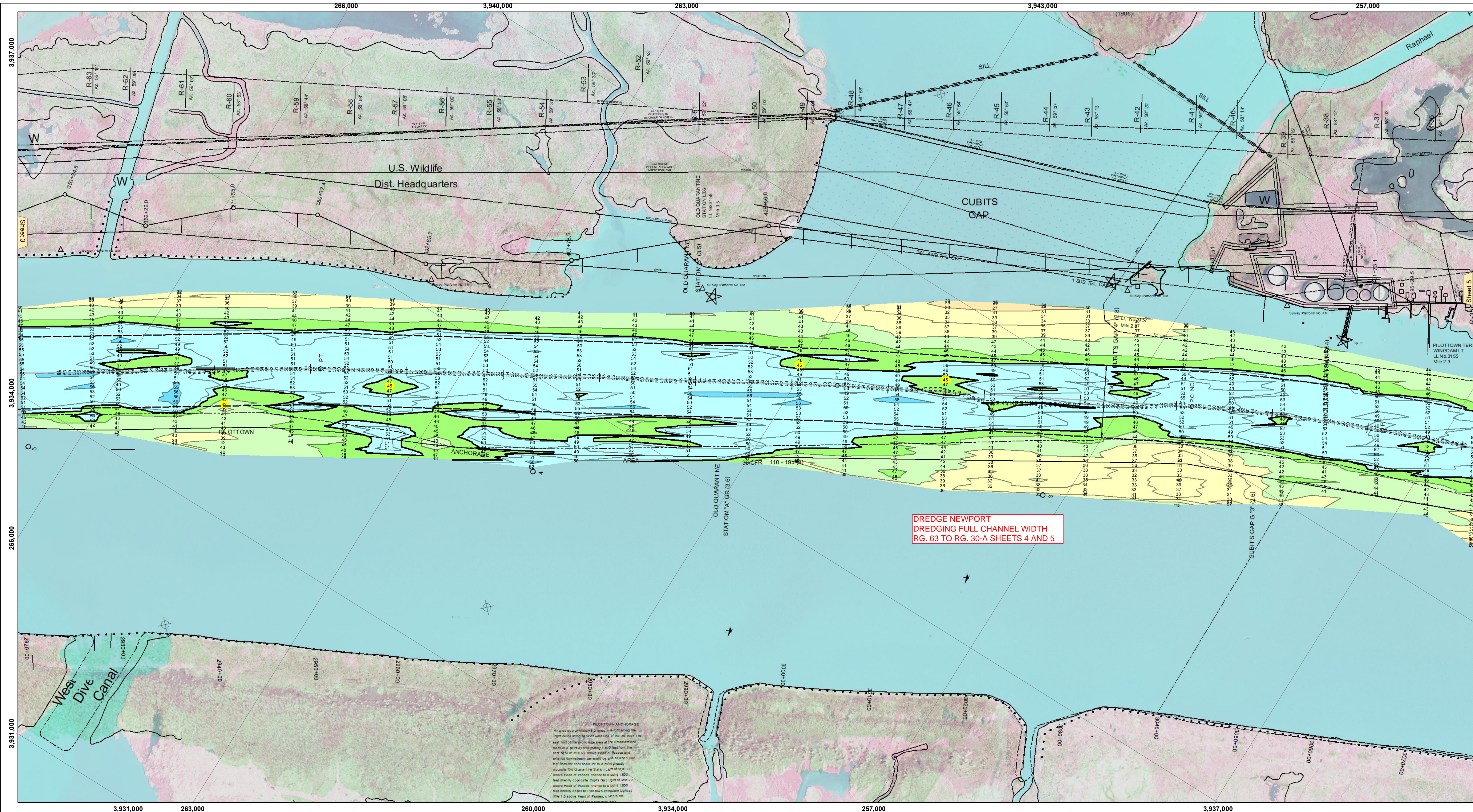
Distribution Liability: The data represents the results of data collection/processing for a specific US Army Corps of Engineers project...

Access: Contractors, the United States Government furnishes these data and the recipient accepts and uses them with the express understanding that the data are provided for informational purposes only...

Table with columns: Submitted, Recommended, Approved, and Surveyed/Checked by. Includes names like JTB & MGF, RSL, and MSK.

MISSISSIPPI RIVER - B.R. TO GULF SOUTHWEST PASS - SHEET 4 SW\_04\_SWP\_20190603\_CS\_FORUM 03 June 2019

Sheet Reference Number 4 of 13



LEGEND section containing symbols for Federal Navigation Channel, Cable Area, Borrow Area, Shoalest Sounding, Beacons, Obstruction Points, Wrecks, and various depth contours.

Navigation and Survey Data section including Gage Reading (2.8 MLLW @ PILOT TOWN @ 0915), Sea Conditions (choppy), Vessel Name (BEAUVAIS), and Sounding Frequency (LOW).

NOTES: Horizontal Coordinate System: North American Datum of 1983 (NAD83), projected to the State Plane Coordinate System (SPCS), Louisiana South Zone. Vertical Datum: Soundings are shown in feet and indicate depths below Mean Lower Low Water (MLLW, 07-11).