

DISTRIBUTION LIABILITY: The data represents the results of data collection/processing for a specific US Army Corps of Engineers project. It is only valid for the intended use, content, time and accuracy specifications. The user is responsible for the results and accuracy of the data. Approximation of the data for other than intended purposes. Data Constants: Hydrographic survey data is subject to change rapidly due to several factors including but not limited to dredging, sedimentation, and other channel changes. The user is responsible for the hydrographical conditions which develop after the date of the survey. The information depicted on the map represents the results of a survey and is not to be considered a representation of the general condition existing at that time.

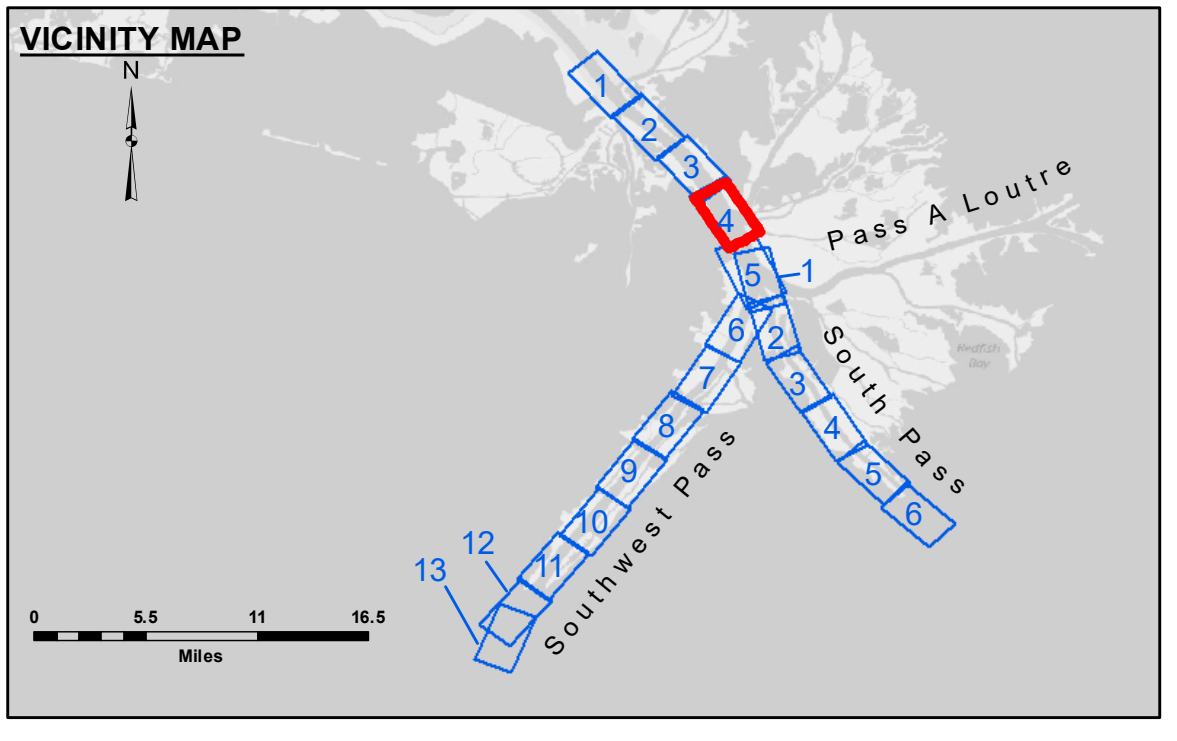
Submitted:	Surveyed By: LLB & MGF
Recommended:	Plotted By: TSS
Approved:	Checked By: MSK

U.S. ARMY CORPS OF ENGINEERS
NEW ORLEANS DISTRICT

**MISSISSIPPI RIVER - B.R. TO GULF
SOUTHWEST PASS - SHEET 4
SW_04_SWP_20190621_CS
21 June 2019**

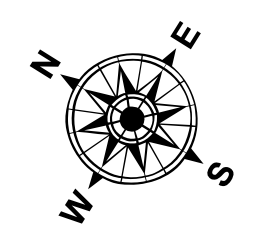
**Sheet Reference Number
4 of 13**

Revision Number:
3.13-20160811

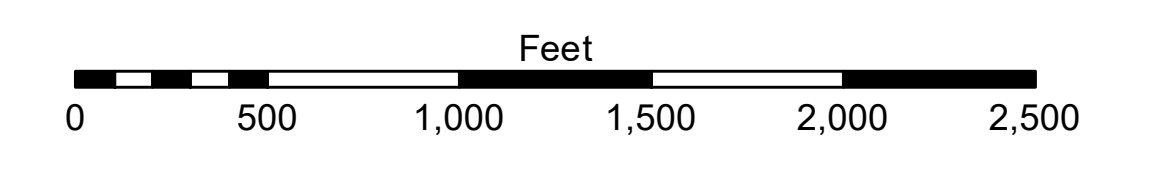


LEGEND

--- Federal Navigation Channel	● Cable Area	□ Borrow Area	■ -10' and above
— Federal Navigation Center Line	□ Placement Area	● Shoalest Sounding**	■ -10' to -20'
— As-built Pipeline/Cable	□ Anchorage Area	★ Beacon, General	■ -20' to -30'
..... Unconfirmed Pipeline/Cable	⊗ Obstruction Point	◆ Red Navigation Buoy	■ -30' to -40'
— Project Depth Contour	⚓ Wrecks-Submerged	◆ Green Navigation Buoy	■ -40' to -45'
			■ -45' to -48.5'
			■ -48.5' to -55'
			■ -55' and below



Gage Reading: 2.4 MLLW @ PILOT TOWN @ 1245
 Sea Conditions: CHOPPY
 Vessel Name: BEAUVAIS
 Survey Type: CONDITION, SB
 Sounding Frequency***: LOW



NOTES:
 Horizontal Coordinate System: North American Datum of 1983 (NAD83), projected to the State Plane Coordinate System (SPCS), Louisiana South Zone. Distance units in U.S. Survey Feet.
 Vertical Datum: Soundings are shown in feet and indicate depths below Mean Lower Low Water (MLLW, 07-11). Datum Relationships for gage 01525 as of July 2015: 0.0' NAVD83 = -0.3' MLLW = 3.20' MLG
 Distances on the Mississippi River, above and below Head of Passes are shown at 1 mile intervals.
 The location of navigation aids are base on and provided by the U.S. Coast Guard.
 2016 Aerial Photography data source: Precision Aerial Reconnaissance, LLC (1998 DOQQ in green)
 Reference is N.O.A. Navigation Chart No. 11361.
 ** Shoalest Sounding per Quarter per Reach.
 *** High frequency (200 kHz) survey data represents the first signal return at a sounding location and will include suspended solids, known as "fluff", if present. Low frequency (24 kHz) survey data normally penetrates through this "fluff" layer to depict elevations of consolidated bottom material. Low frequency accuracies may vary depending on channel conditions and fathometer settings.