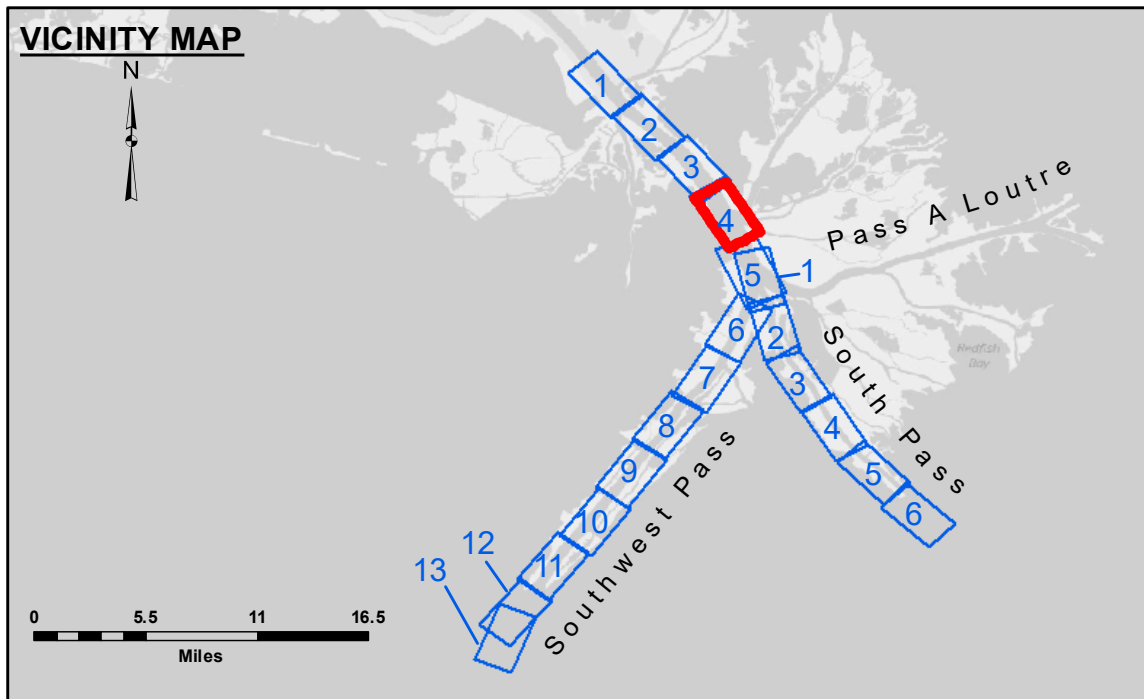


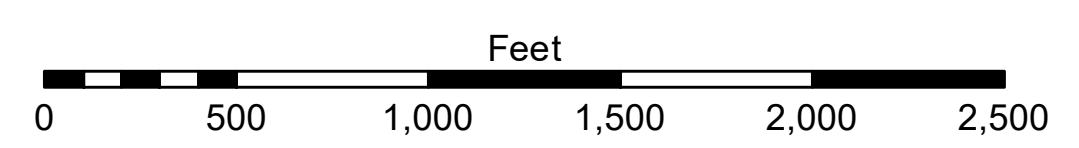
DREDGE NEWPORT
DREDGING FULL CHANNEL WIDTH
RG. 52 TO RG. 20 SHEETS 4 AND 5



LEGEND			
	Federal Navigation Channel		Placement Area
	Federal Navigation Center Line		Borrow Area
	As-built Pipeline/Cable		Shoalest Sounding**
	Unconfirmed Pipeline/Cable		Beacon, General
	Project Depth Contour		Red Navigation Buoy
	Obstruction Point		Green Navigation Buoy
	Wrecks-Submerged		-10' and above
	Cable Area		-10' to -20'
	Anchor Area		-20' to -30'
	Obstruction Point		-30' to -40'
	Wrecks-Submerged		-40' to -45'
	Wrecks-Submerged		-45' to -48.5'
	Wrecks-Submerged		-48.5' to -55'
	Wrecks-Submerged		-55' and below



Gage Reading: 1.8 MLLW @ PILOT TOWN @ 0855
 Sea Conditions: CALM
 Vessel Name: JOHN BOPP
 Survey Type: CONDITION, SB
 Sounding Frequency***: LOW



NOTES:
 Horizontal Coordinate System: North American Datum of 1983 (NAD83), projected to the State Plane Coordinate System (SPCS), Louisiana South Zone. Distance units in U.S. Survey Feet.
 Vertical Datum: Soundings are shown in feet and indicate depths below Mean Lower Low Water (MLLW, 07-11). Datum Relationships for gage 01525 as of July 2015: 0.0' NAVD83 = -0.3' MLLW = 3.20' MLG
 Distances on the Mississippi River, above and below Head of Passes are shown at 1 mile intervals.
 The location of navigation aids are base on and provided by the U.S. Coast Guard.
 2016 Aerial Photography data source: Precision Aerial Reconnaissance, LLC (1998 DOQQ in green)
 Reference is N.O.A. Navigation Chart No. 11361.
 ** Shoalest Sounding per Quarter per Reach.
 *** High frequency (200 kHz) survey data represents the first signal return at a sounding location and will include suspended solids, known as "fluff", if present. Low frequency (24 kHz) survey data normally penetrates through this "fluff" layer to depict elevations of consolidated bottom material. Low frequency accuracies may vary depending on channel conditions and fathometer settings.



DISTRIBUTION LIABILITY: The data represents the results of data collection/processing for a specific U.S. Army Corps of Engineers project. It is only valid for its intended use, content, time and accuracy specifications. The user is responsible for the results of any use of this data for purposes other than those intended for its use. Data Constants: Hydrographic survey data is subject to change rapidly due to several factors including but not limited to dredging operations. These data are being released in accordance with the U.S. Army Corps of Engineers' policy of transparency. The user is responsible for the hydrographical conditions which develop after the date of the information depicted on the map represents the results of a survey conducted at that time. The information is not to be used to represent the general condition existing at that time.

U.S. ARMY CORPS OF ENGINEERS NEW ORLEANS DISTRICT	
Submitted:	Surveyed By: LLB, JJC & DBD
Recommended:	Plotted By: RSL
Approved:	Checked By: MSK

**MISSISSIPPI RIVER - B.R. TO GULF
 SOUTHWEST PASS - SHEET 4
 SW_04_SWP_20190806_CS_FORUM
 06 August 2019**

**Sheet Reference Number
 4 of 13**