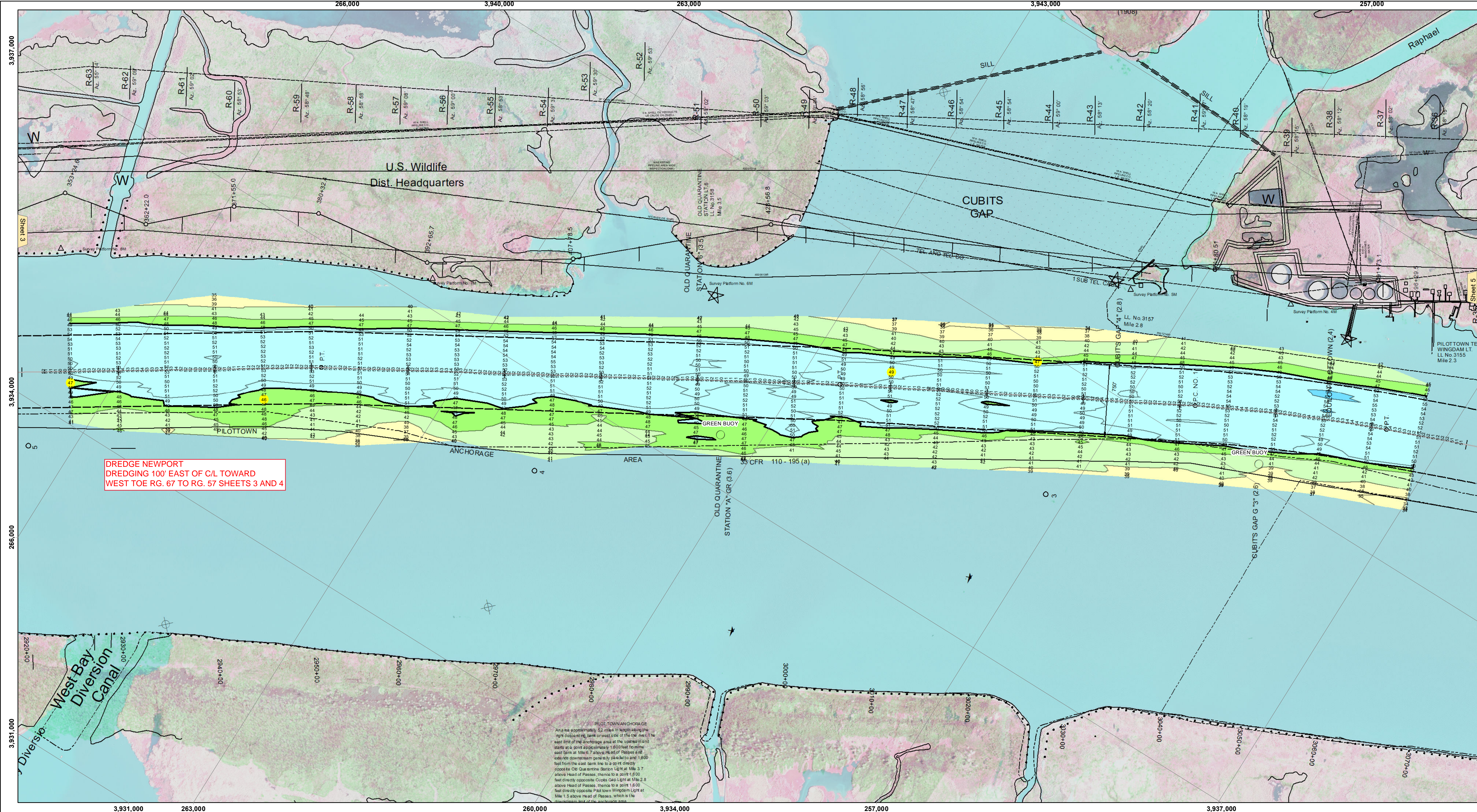
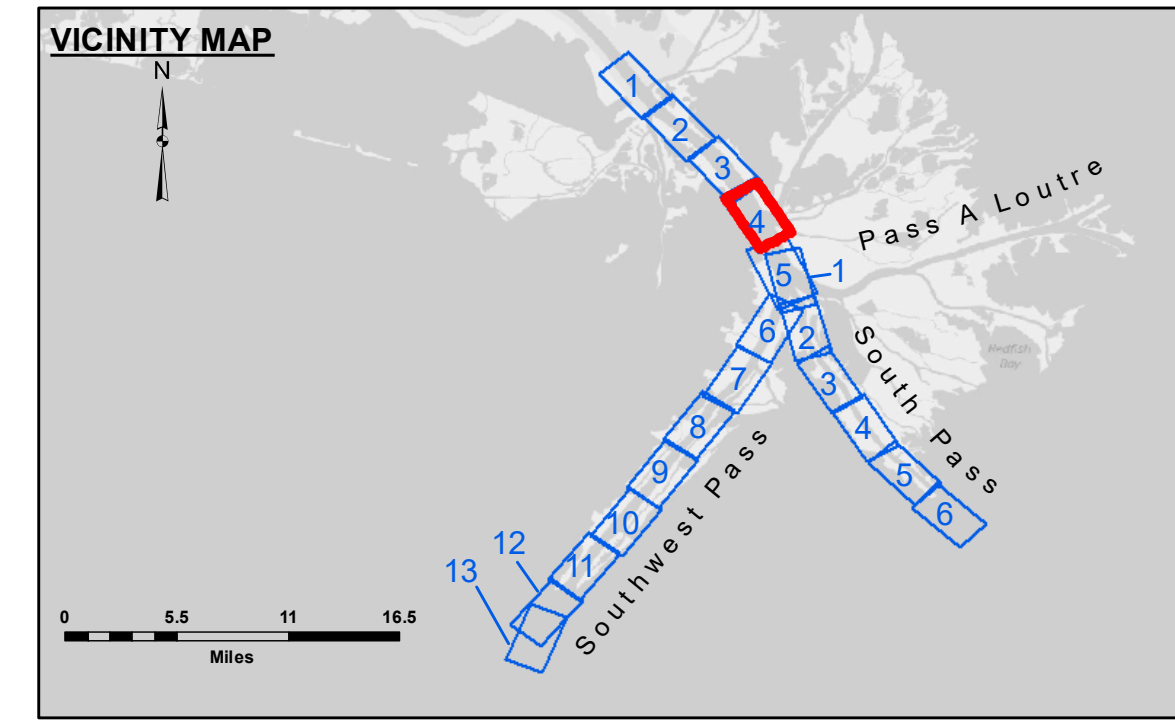




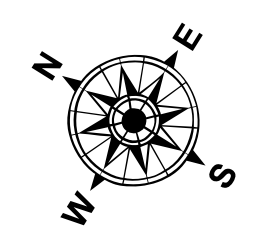
Distribution Liability: The data represents the results of data collection for a specific US Army Corps of Engineers project...



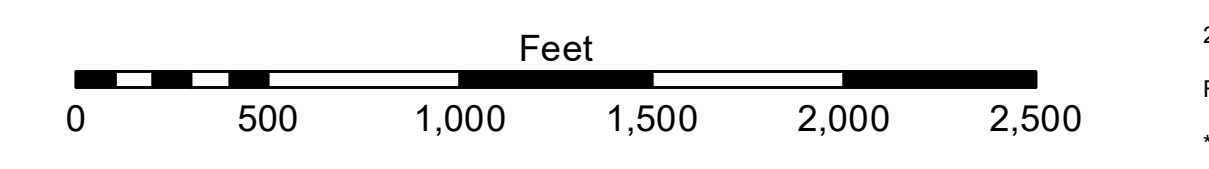
DREDGE NEWPORT EAST DREDGING 100' EAST OF CL TOWARD WEST TOE RG. 67 TO RG. 57 SHEETS 3 AND 4



LEGEND table with symbols for Federal Navigation Channel, Cable Area, Borrow Area, Shoalest Sounding, Beacons, Buoys, and various depth contours.



Gage Reading: 1.1 MLLW @ PILOT TOWN @ 1030
Sea Conditions: CHOPPY
Vessel Name: JOHN BOPP
Survey Type: CONDITION, SB
Sounding Frequency\*\*\*: LOW



NOTES: Horizontal Coordinate System: North American Datum of 1983 (NAD83) projected to the State Plane Coordinate System (SPCS), Louisiana South Zone. Distance units in U.S. Survey Feet.

The location of navigation aids are base on and provided by the U.S. Coast Guard. 2016 Aerial Photography data source: Precision Aerial Reconnaissance, LLC (1998 DOQQ in green)

Administrative table with columns for Submitted, Recommended, Approved, and Checked By, with names JJC, JTB, MGF, RSL, and MSK.

MISSISSIPPI RIVER - B.R. TO GULF SOUTHWEST PASS - SHEET 4 SW\_04\_SWP\_20190819\_CS 19 August 2019

Sheet Reference Number 4 of 13

Revision Number: 4.0-20190702