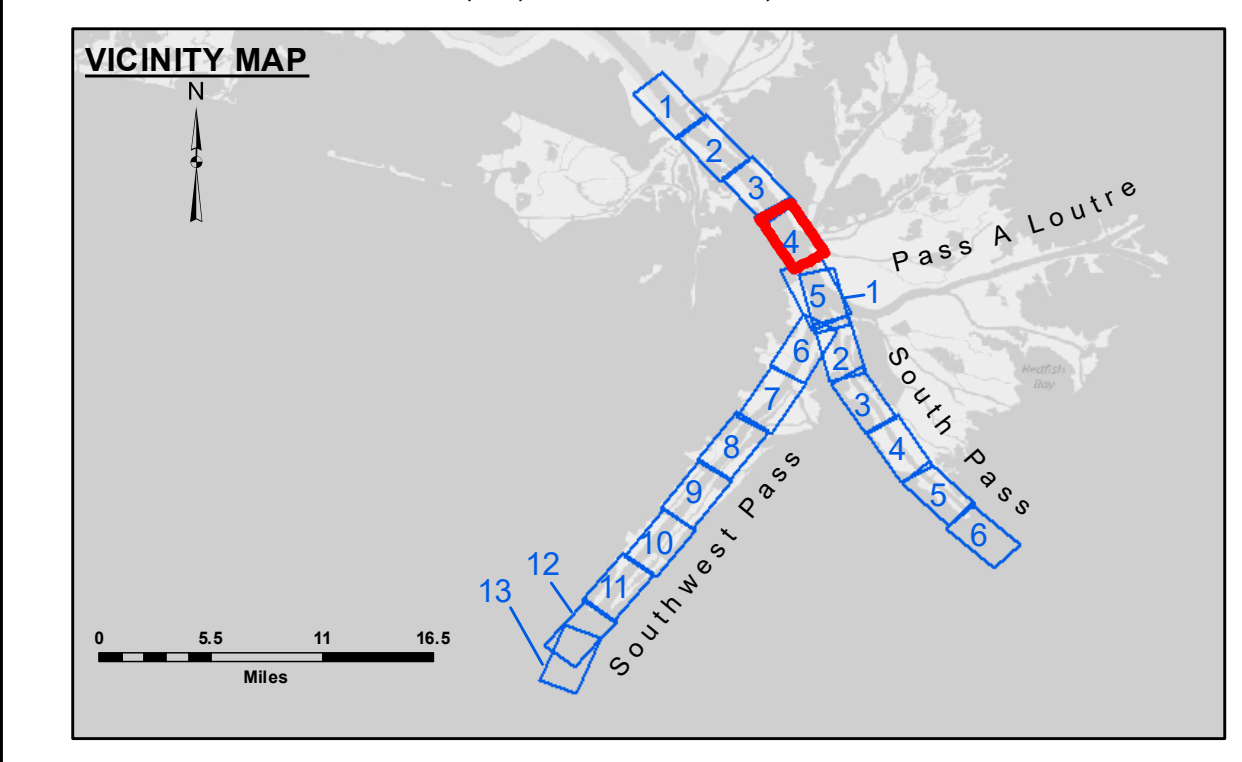
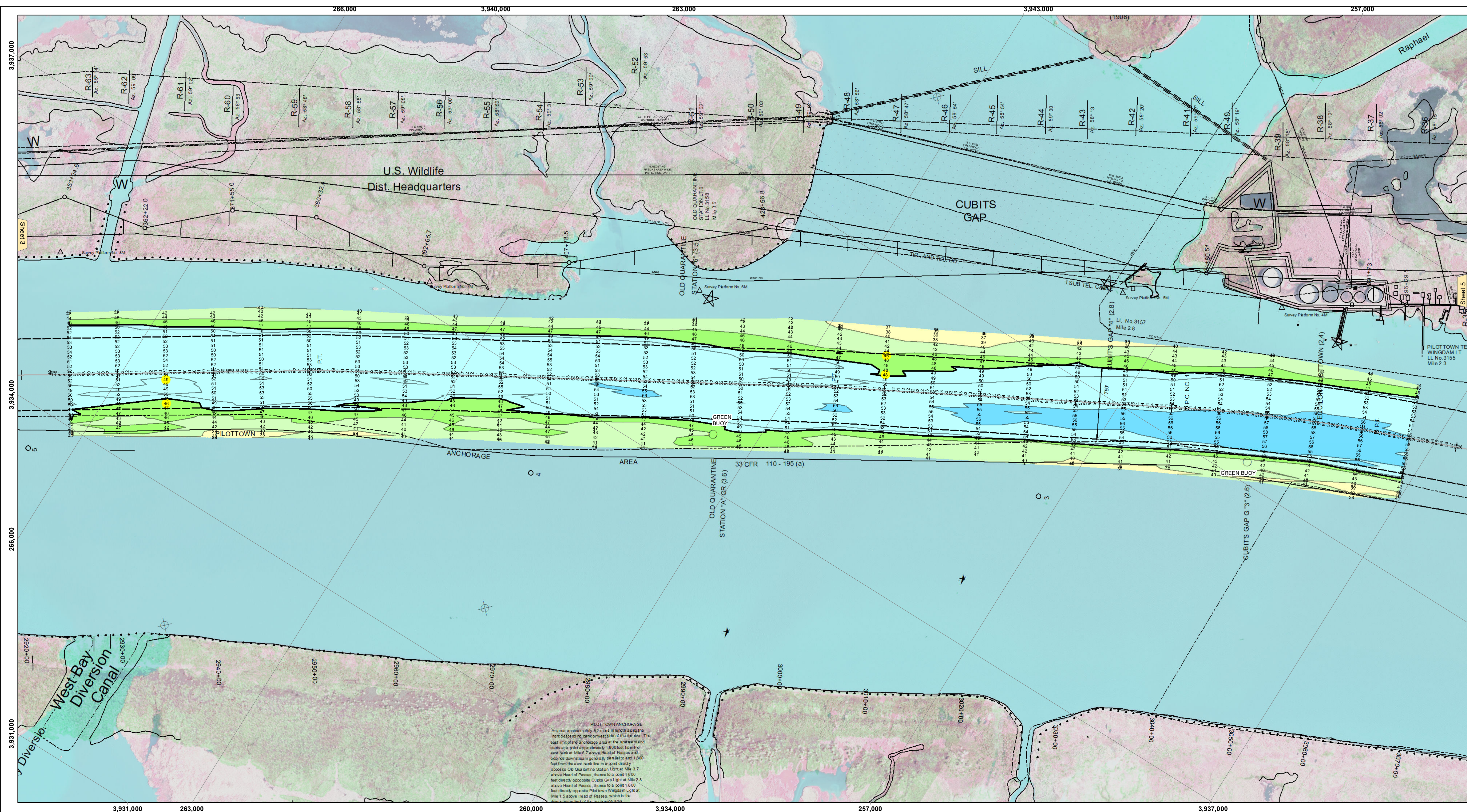




**Distribution Liability:** The data represents the results of data collection/processing for a specific US Army Corps of Engineers project. It is only valid for its intended use, content, time and accuracy specifications. The user is responsible for the results and interpretation of the data for their own intended purpose.

**Data:** Hydrographic survey data is subject to change rapidly due to several factors including but not limited to dredging activities, channel migration, and changes in the hydrographical conditions which develop after the date of the survey. The user is responsible for the accuracy of the data and is advised to verify the data for their own intended purpose.

**Disclaimer:** The information depicted on the map represents the results of a survey and is not intended to be used as a navigational aid. The user is advised to consult the appropriate nautical charts and publications for the latest information. The Corps of Engineers does not warrant the accuracy of the information and is not responsible for any loss or damage resulting from its use.



LEGEND			
--- Federal Navigation Channel	● Cable Area	□ Borrow Area	■ -10' and above
— Federal Navigation Center Line	■ Placement Area	● Shoalest Sounding**	■ -10' to -20'
— As-built Pipeline/Cable	□ Anchorage Area	★ Beacon, General	■ -20' to -30'
..... Unconfirmed Pipeline/Cable	⊗ Obstruction Point	◆ Red Navigation Buoy	■ -30' to -40'
— Project Depth Contour	⚓ Wrecks-Submerged	◆ Green Navigation Buoy	■ -40' to -45'
			■ -45' to -48.5'
			■ -48.5' to -55'
			■ -55' and below

Gage Reading: 1.6 MLLW @ PILOT TOWN @ 1030

Sea Conditions: CALM

Vessel Name: BEAUVAIS

Survey Type: CONDITION, SB

Sounding Frequency\*\*\*: LOW

**NOTES:**

Horizontal Coordinate System: North American Datum of 1983 (NAD83), projected to the State Plane Coordinate System (SPCS), Louisiana South Zone. Distance units in U.S. Survey Feet.

Vertical Datum: Soundings are shown in feet and indicate depths below Mean Lower Low Water (MLLW, 07-11). Datum Relationships for gage 01525 as of July 2015: 0.0' NAVD86 = -0.3' MLLW = 3.20' MLG

Distances on the Mississippi River, above and below Head of Passes are shown at 1 mile intervals.

The location of navigation aids are base on and provided by the U.S. Coast Guard.

2016 Aerial Photography data source: Precision Aerial Reconnaissance, LLC (1998 DOQQ in green)

Reference is N.O.A. Navigation Chart No. 11361.

\*\* Shoalest Sounding per Quarter per Reach.

\*\*\* High frequency (200 kHz) survey data represents the first signal return at a sounding location and will include suspended solids, known as "fluff", if present. Low frequency (24 kHz) survey data normally penetrates through this "fluff" layer to depict elevations of consolidated bottom material. Low frequency accuracies may vary depending on channel conditions and fathometer settings.

U.S. ARMY CORPS OF ENGINEERS NEW ORLEANS DISTRICT			
Submitted:	Surveyed By: LLB, JJC & MGF	Plotted By: TSS	Checked By: MSK
Recommended:	Chief, Survey Section		Chief, Waterways Maintenance Section
Approved:			

**MISSISSIPPI RIVER - B.R. TO GULF  
SOUTHWEST PASS - SHEET 4  
SW\_04\_SWP\_20200124\_CS**

**24 January 2020**

**Sheet Reference Number**  
4 of 13

Revision Number:  
4.0-20190702