

Distribution Liability: The data represents the results of data collection/processing for a specific US Army Corps of Engineers project. It is only valid for its intended use, content, time and accuracy specifications. The user is responsible for the results and accuracy of the data for their own intended purpose.

Data: Constants: Hydrographic survey data is subject to change rapidly due to several factors including but not limited to dredging operations, channel shifts, and changes in the hydrographical conditions which develop after the date of the survey. The information depicted on the map represents the results of a survey conducted on the date shown. It is not intended to represent the general condition existing at that time.

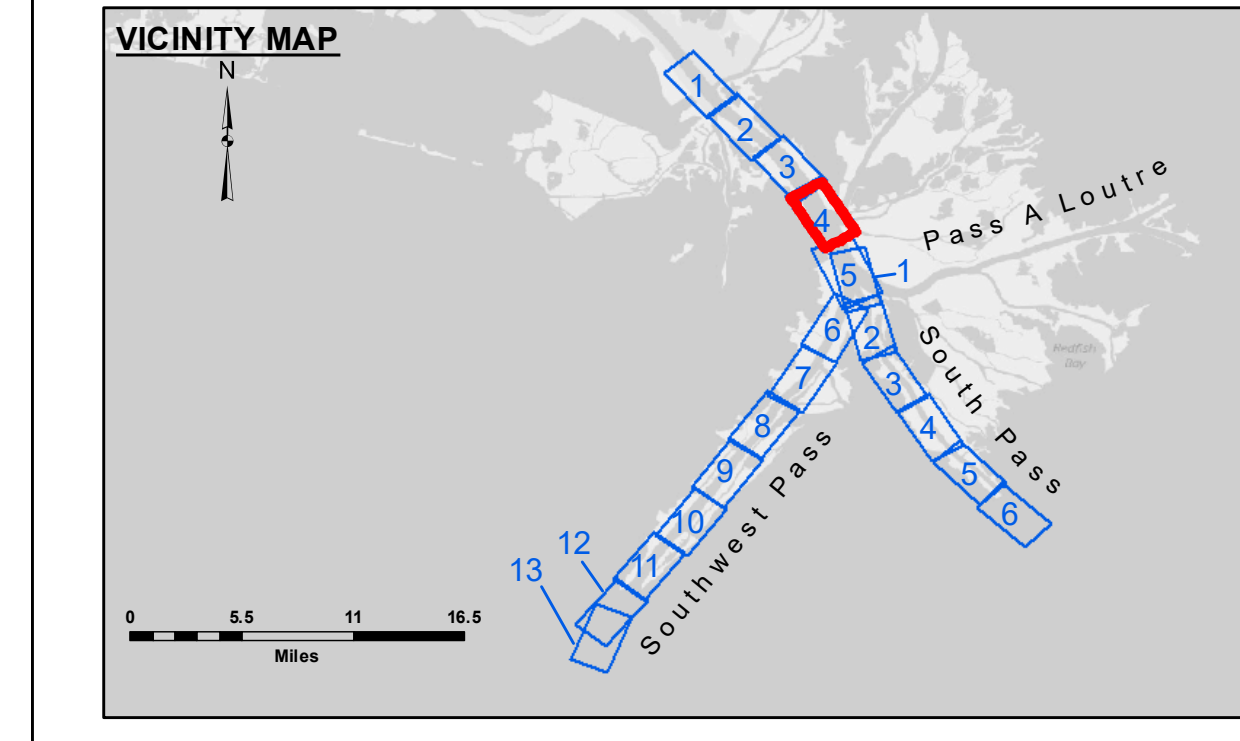
Access: The United States Government furnishes these data and the recipient accepts and uses them with the express understanding that the data are not to be used for any purpose other than that for which they were collected, and that the data are not to be used for any purpose other than that for which they were collected, and that the data are not to be used for any purpose other than that for which they were collected.

| | |
|--|--------------------------------------|
| U.S. ARMY CORPS OF ENGINEERS NEW ORLEANS DISTRICT | |
| Surveyed By: JUC & RCC | Plotted By: TSS |
| Submitted: | Checked By: MSK |
| Recommended: | Checked By: |
| Chart, Survey Section | Chart, Waterways Maintenance Section |

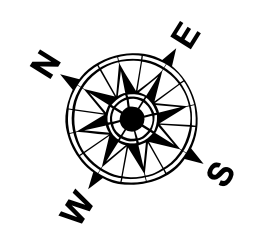
**MISSISSIPPI RIVER - B.R. TO GULF
SOUTHWEST PASS - SHEET 4
SW_04_SWP_20200208_CS
08 February 2020**

**Sheet Reference Number
4 of 13**

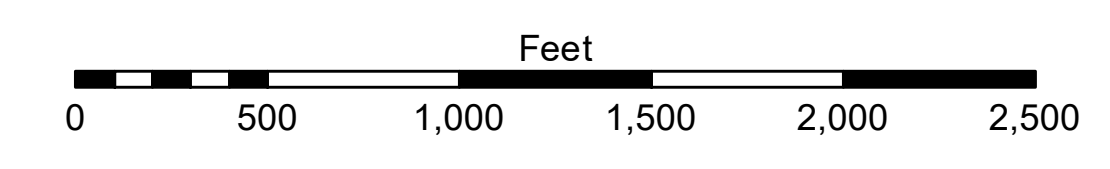
Revision Number:
4.0-20190702



| LEGEND | | | |
|----------------------------------|---------------------|-------------------------|------------------|
| --- Federal Navigation Channel | ● Cable Area | □ Borrow Area | ■ -10' and above |
| — Federal Navigation Center Line | □ Placement Area | ● Shoalest Sounding** | ■ -10' to -20' |
| — As-built Pipeline/Cable | □ Anchorage Area | ★ Beacon, General | ■ -20' to -30' |
| Unconfirmed Pipeline/Cable | ⊗ Obstruction Point | ◆ Red Navigation Buoy | ■ -30' to -40' |
| — Project Depth Contour | ⚓ Wrecks-Submerged | ◆ Green Navigation Buoy | ■ -40' to -45' |
| | | | ■ -45' to -48.5' |
| | | | ■ -48.5' to -55' |
| | | | ■ -55' and below |



Gage Reading: 1.5 MLLW @ PILOT TOWN @ 1115
 Sea Conditions: CALM
 Vessel Name: JOHN BOPP
 Survey Type: CONDITION, SB
 Sounding Frequency***: LOW



NOTES:
 Horizontal Coordinate System: North American Datum of 1983 (NAD83), projected to the State Plane Coordinate System (SPCS), Louisiana South Zone. Distance units in U.S. Survey Feet.
 Vertical Datum: Soundings are shown in feet and indicate depths below Mean Lower Low Water (MLLW, 07-11). Datum Relationships for gage 01525 as of July 2015: 0.0' NAVD86 = -0.3' MLLW = 3.20' MLG
 Distances on the Mississippi River, above and below Head of Passes are shown at 1 mile intervals.
 The location of navigation aids are base on and provided by the U.S. Coast Guard.
 2016 Aerial Photography data source: Precision Aerial Reconnaissance, LLC (1998 DOQQ in green)
 Reference is N.O.A. Navigation Chart No. 11361.
 ** Shoalest Sounding per Quarter per Reach.
 *** High frequency (200 kHz) survey data represents the first signal return at a sounding location and will include suspended solids, known as "fluff", if present. Low frequency (24 kHz) survey data normally penetrates through this "fluff" layer to depict elevations of consolidated bottom material. Low frequency accuracies may vary depending on channel conditions and fathometer settings.