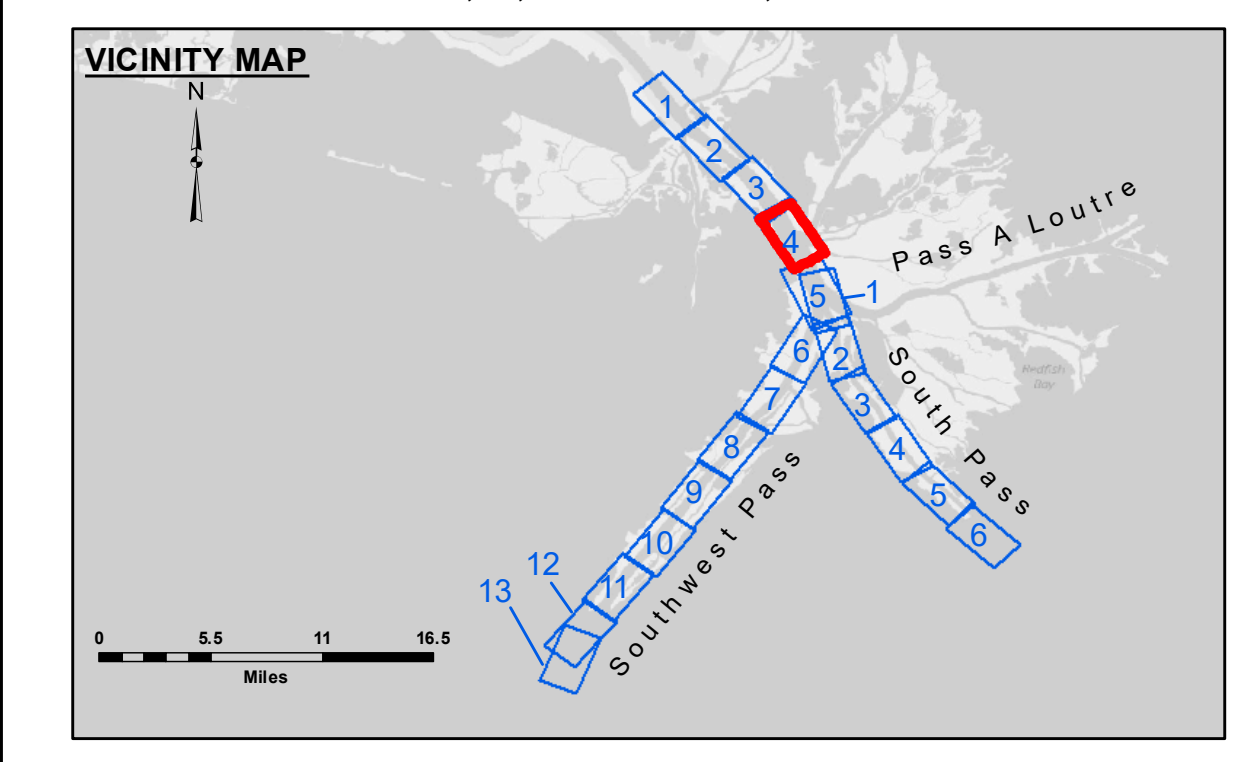
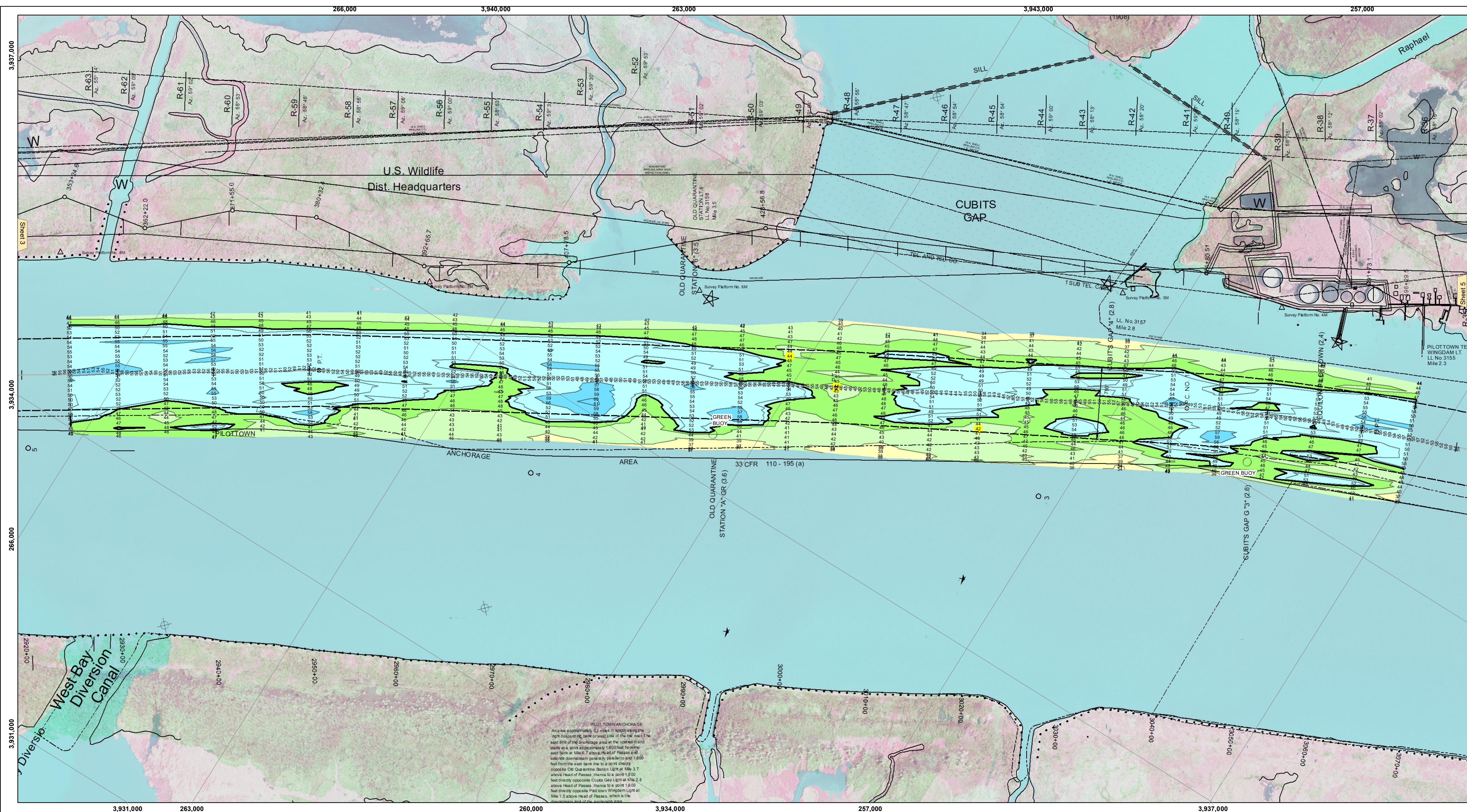




US Army Corps of Engineers District: CEMVN

DISCLAIMER: The data represents the results of data collection/processing for a specific US Army Corps of Engineers project. The data is only valid for its intended use, content, time and accuracy specifications. The user is responsible for the results and accuracy of the data. The user is responsible for the results and accuracy of the data. The user is responsible for the results and accuracy of the data.



LEGEND

--- Federal Navigation Channel	● Cable Area	□ Borrow Area	■ -10' and above
— Federal Navigation Center Line	□ Placement Area	● Shoalest Sounding**	■ -10' to -20'
— As-built Pipeline/Cable	□ Anchorage Area	★ Beacon, General	■ -20' to -30'
..... Unconfirmed Pipeline/Cable	⊗ Obstruction Point	◆ Red Navigation Buoy	■ -30' to -40'
— Project Depth Contour	⚓ Wrecks-Submerged	◆ Green Navigation Buoy	■ -40' to -45'
			■ -45' to -48.5'
			■ -48.5' to -55'
			■ -55' and below

NOTES:

Horizontal Coordinate System: North American Datum of 1983 (NAD83), projected to the State Plane Coordinate System (SPCS), Louisiana South Zone. Distance units in U.S. Survey Feet.

Vertical Datum: Soundings are shown in feet and indicate depths below Mean Lower Low Water (MLLW, 07-11). Datum Relationships for gage 01525 as of July 2015: 0.0' NAVD86 = -0.3' MLLW = 3.20' MLG

Distances on the Mississippi River, above and below Head of Passes are shown at 1 mile intervals.

The location of navigation aids are base on and provided by the U.S. Coast Guard.

2016 Aerial Photography data source: Precision Aerial Reconnaissance, LLC (1998 DOQQ in green)

Reference is N.O.A. Navigation Chart No. 11361.

** Shoalest Sounding per Quarter per Reach.

*** High frequency (200 kHz) survey data represents the first signal return at a sounding location and will include suspended solids, known as "fluff", if present. Low frequency (24 kHz) survey data normally penetrates through this "fluff" layer to depict elevations of consolidated bottom material. Low frequency accuracies may vary depending on channel conditions and fathometer settings.

Gage Reading: 2.4 MLLW @ PILOT TOWN @ 1215

Sea Conditions: CALM

Vessel Name: JOHN BOPP

Survey Type: CONDITION, SB

Sounding Frequency***: LOW

Scale: 0 to 2,500 Feet

U.S. ARMY CORPS OF ENGINEERS NEW ORLEANS DISTRICT

Submitted:	Surveyed By: JUC & MGF
Recommended:	Plotted By: TSS
Approved:	Checked By: MSK

MISSISSIPPI RIVER - B.R. TO GULF SOUTHWEST PASS - SHEET 4

SW_04_SWP_20200313_CS

13 March 2020

Sheet Reference Number

4 of 13

Revision Number: 4.0-20190702