



US Army Corps of Engineers District: CEMVN

Distribution Liability: The data represents the results of data collection/processing for a specific US Army Corps of Engineers project. It is only valid for its intended use, content, time and accuracy specifications. The user is responsible for the results. The user should not rely on this data for other than its intended purpose.

Data Constants: Hydrographic survey data is subject to change frequently due to several factors including but not limited to dredging operations. These data are being used for a specific project. The user should not rely on this data for other than its intended purpose. The information depicted on the map represents the results of a hydrographic survey conducted at the time of the data collection. It is not intended to represent the general condition existing at that time.

ACCESS NOTES

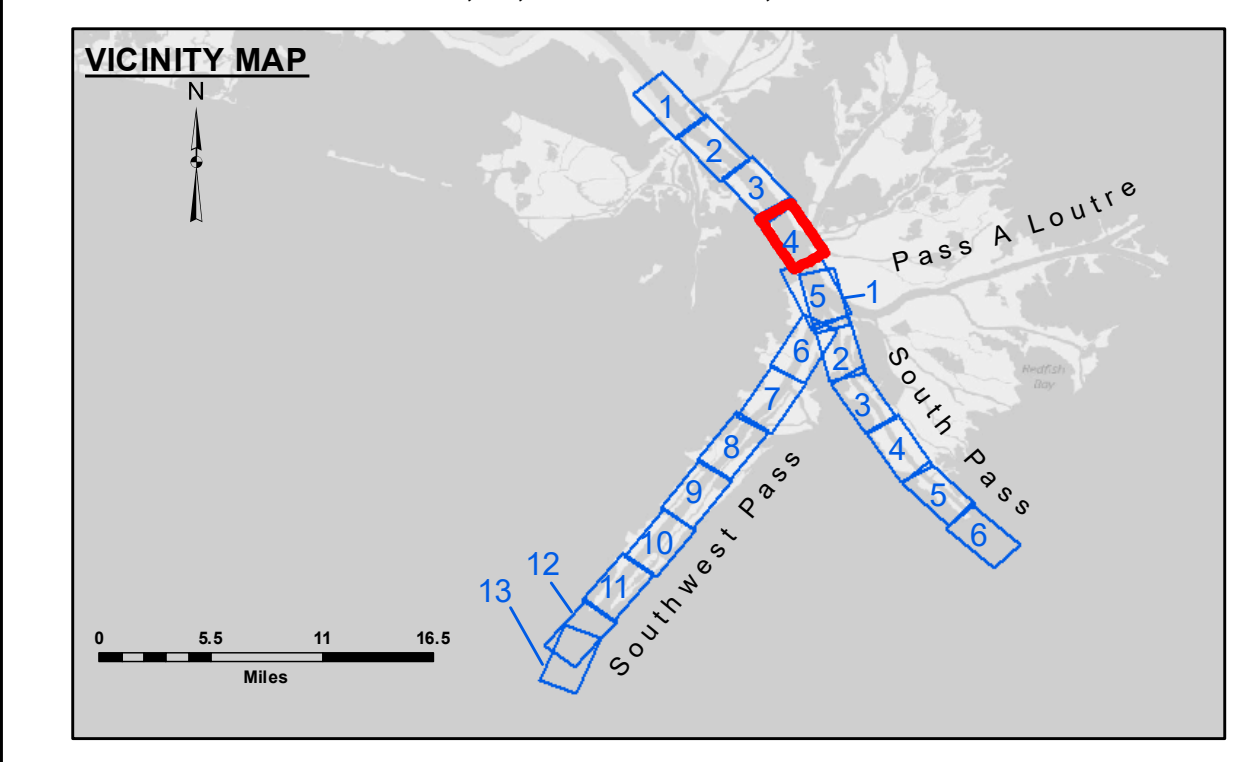
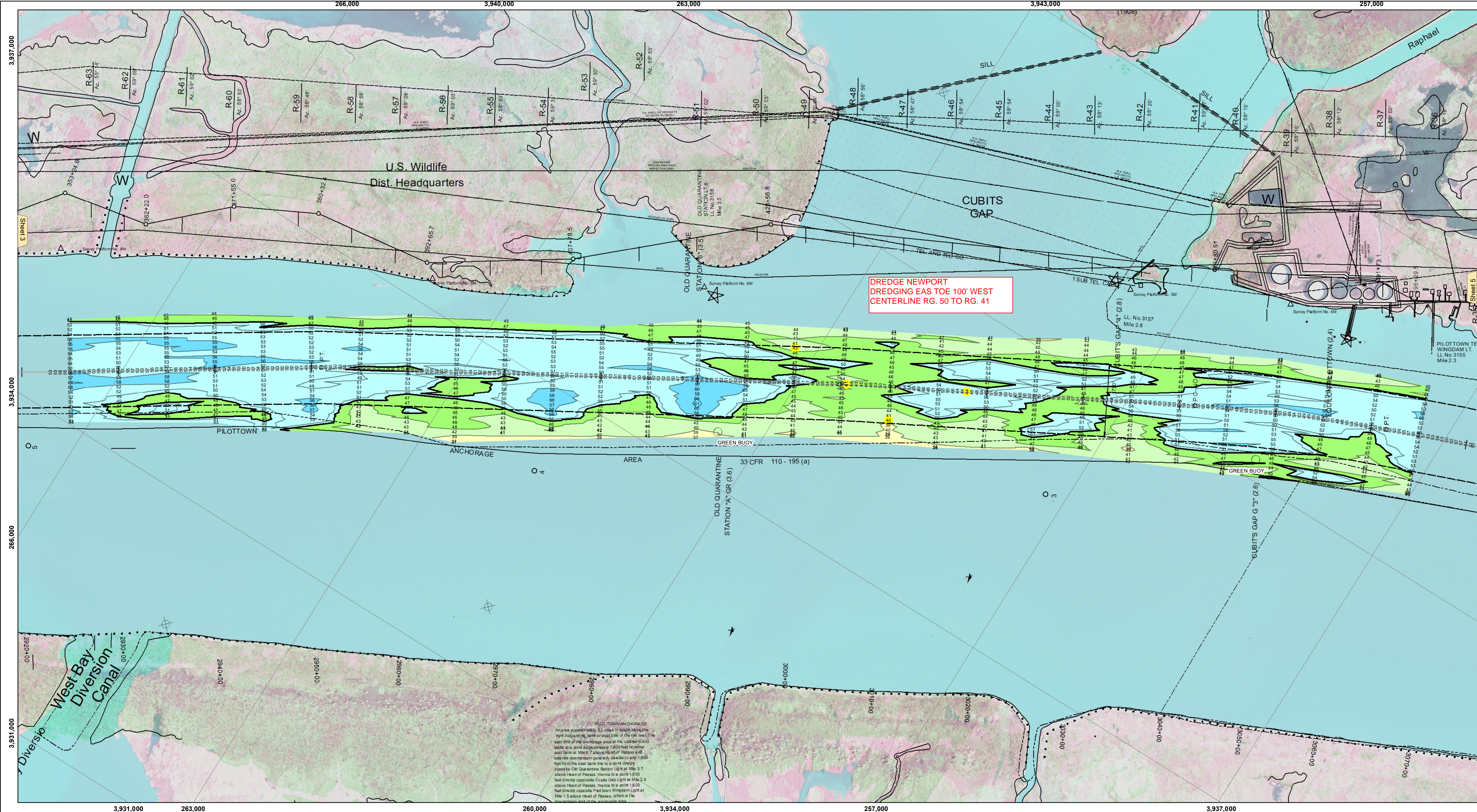
Access Constraints: The United States Government furnishes these data and the recipient accepts and uses them with the express understanding that the recipient is not to disseminate, distribute, or use these data, in whole or in part, for any purpose other than that for which they were originally provided. The user is responsible for the results. The user should not rely on this data for other than its intended purpose. The information depicted on the map represents the results of a hydrographic survey conducted at the time of the data collection. It is not intended to represent the general condition existing at that time.

U.S. ARMY CORPS OF ENGINEERS NEW ORLEANS DISTRICT

Submitted:	Surveyed By: JH & RCC
Recommended: Chief, Survey Section	Plotted By: RSL
Approved: Chief, Waterways Maintenance Section	Checked By: MSK

MISSISSIPPI RIVER - B.R. TO GULF SOUTHWEST PASS - SHEET 4
SW_04_SWP_20200315_CS
15 March 2020

Sheet Reference Number
4 of 13



LEGEND

- - - Federal Navigation Channel	••• Cable Area	□ Borrow Area	■ -10' and above
— Federal Navigation Center Line	▭ Placement Area	● Shoalest Sounding**	■ -10' to -20'
— As-built Pipeline/Cable	⊠ Anchorage Area	★ Beacon, General	■ -20' to -30'
..... Unconfirmed Pipeline/Cable	⊗ Obstruction Point	◆ Red Navigation Buoy	■ -30' to -40'
— Project Depth Contour	✙ Wrecks-Submerged	◆ Green Navigation Buoy	■ -40' to -45'
			■ -45' to -48.5'
			■ -48.5' to -55'
			■ -55' and below

NOTES:

Horizontal Coordinate System:
 North American Datum of 1983 (NAD83), projected to the State Plane Coordinate System (SPCS), Louisiana South Zone. Distance units in U.S. Survey Feet.

Vertical Datum:
 Soundings are shown in feet and indicate depths below Mean Lower Low Water (MLLW, 07-11). Datum Relationships for gage 01525 as of July 2015:
 0.0' NAVD88 = -0.3' MLLW = 3.20' MLG

Distances on the Mississippi River, above and below Head of Passes are shown at 1 mile intervals.

The location of navigation aids are base on and provided by the U.S. Coast Guard.

2016 Aerial Photography data source: Precision Aerial Reconnaissance, LLC (1998 DOQQ in green)

Reference is N.O.A. Navigation Chart No. 11361.

** Shoalest Sounding per Quarter per Reach.

*** High frequency (200 kHz) survey data represents the first signal return at a sounding location and will include suspended solids, known as "fluff", if present. Low frequency (24 kHz) survey data normally penetrates through this "fluff" layer to depict elevations of consolidated bottom material. Low frequency accuracies may vary depending on channel conditions and fathometer settings.

Gage Reading: 2.3 MLLW @ PILOT TOWN @ 1445
 Sea Conditions: CALM
 Vessel Name: JOHN BOPP
 Survey Type: CONDITION, SB
 Sounding Frequency***: LOW

Sheet 3

Sheet 5

3,937,000

3,934,000

266,000

3,940,000

263,000

3,931,000

260,000

3,934,000

257,000

3,937,000