



**US Army Corps of Engineers District: CEMVN**

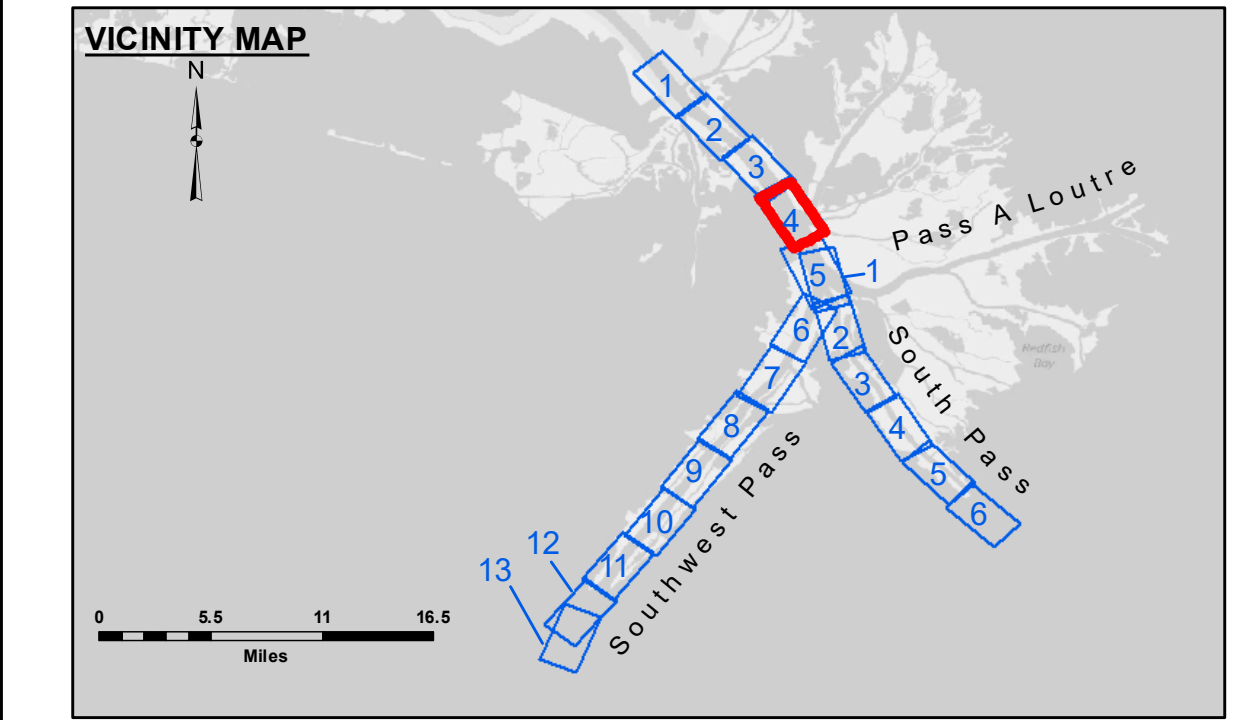
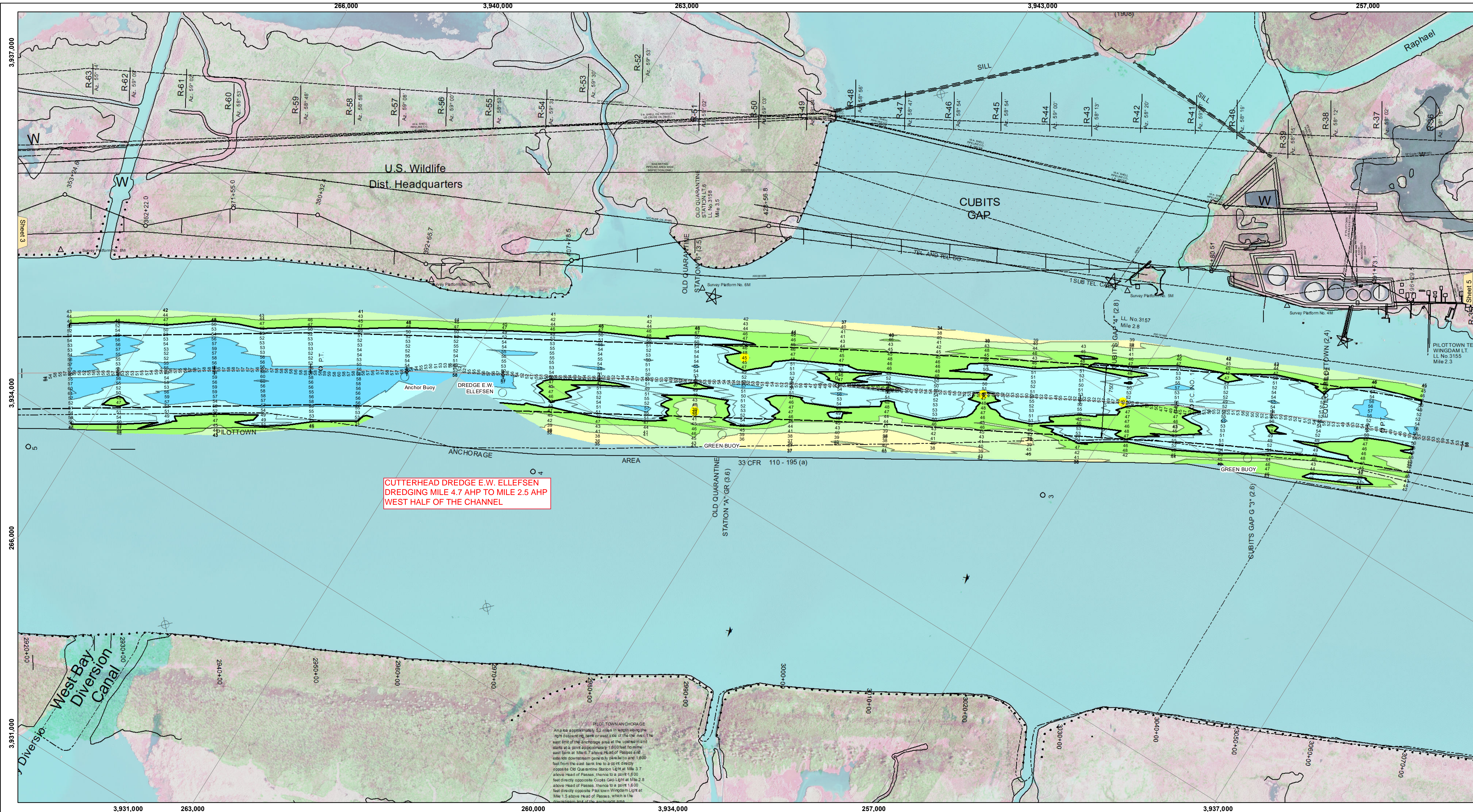
**DISCLAIMER**  
 The United States Government furnishes these data and the recipient accepts and uses them with the express understanding that the data are not warranted for accuracy, completeness, reliability, usability or suitability for any particular purpose of the recipient. The user is responsible for the accuracy, completeness, reliability, usability or suitability of the data for their intended purpose. The information depicted on this map represents the results of a hydrographic survey conducted in the area shown and is not to be used for navigation. The recipient may not transfer these data to others without obtaining the permission of the Engineer. The information depicted on this map represents the results of a hydrographic survey conducted in the area shown and is not to be used for navigation. The recipient may not transfer these data to others without obtaining the permission of the Engineer. The information depicted on this map represents the results of a hydrographic survey conducted in the area shown and is not to be used for navigation. The recipient may not transfer these data to others without obtaining the permission of the Engineer.

Surveyed By:	LLB & DBD
Plotted By:	TSS
Checked By:	MSK

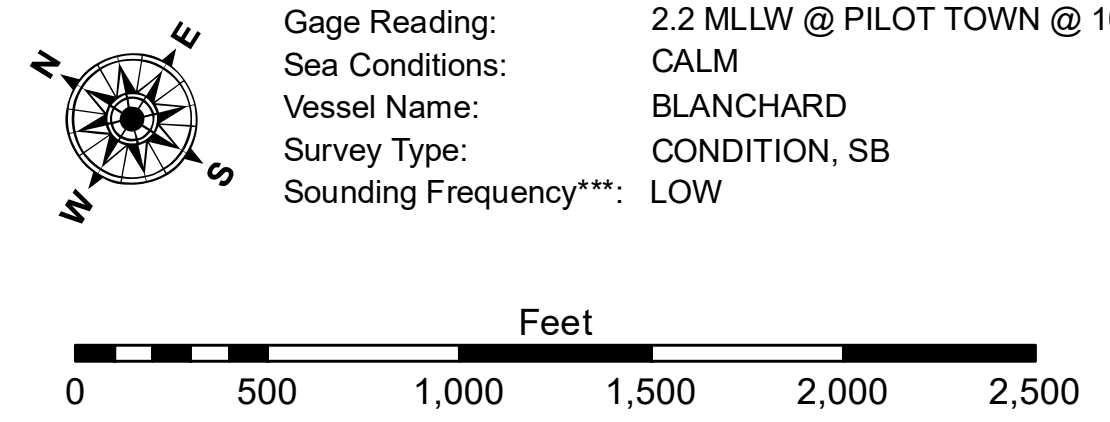
**MISSISSIPPI RIVER - B.R. TO GULF  
 SOUTHWEST PASS - SHEET 4  
 SW\_04\_SWP\_20200327\_CS**  
 27 March 2020

**Sheet Reference Number**  
 4 of 13

Revision Number:  
 4.0-20190702



LEGEND	
--- Federal Navigation Channel	● Cable Area
— Federal Navigation Center Line	□ Placement Area
— As-built Pipeline/Cable	□ Anchorage Area
..... Unconfirmed Pipeline/Cable	⊗ Obstruction Point
— Project Depth Contour	★ Wrecks-Submerged
□ Borrow Area	★ Beacon, General
● Shoalest Sounding**	◆ Red Navigation Buoy
◆ Green Navigation Buoy	
■ -10' and above	
■ -10' to -20'	
■ -20' to -30'	
■ -30' to -40'	
■ -40' to -45'	
■ -45' to -48.5'	
■ -48.5' to -55'	
■ -55' and below	



**NOTES:**  
 Horizontal Coordinate System: North American Datum of 1983 (NAD83), projected to the State Plane Coordinate System (SPCS), Louisiana South Zone. Distance units in U.S. Survey Feet.  
 Vertical Datum: 2.2 MLLW @ PILOTTOWN @ 1015  
 Soundings are shown in feet and indicate depths below Mean Lower Low Water (MLLW, 07-11). Datum Relationships for gage 01525 as of July 2015: 0.0' NAVD88 = -0.3' MLLW = 3.20' MLG  
 Distances on the Mississippi River, above and below Head of Passes are shown at 1 mile intervals.  
 The location of navigation aids are based on and provided by the U.S. Coast Guard.  
 2016 Aerial Photography data source: Precision Aerial Reconnaissance, LLC (1998 DOQQ in green)  
 Reference is N.O.A. Navigation Chart No. 11361.  
 \*\* Shoalest Sounding per Quarter per Reach.  
 \*\*\* High frequency (200 kHz) survey data represents the first signal return at a sounding location and will include suspended solids, known as "fluff", if present. Low frequency (24 kHz) survey data normally penetrates through this "fluff" layer to depict elevations of consolidated bottom material. Low frequency accuracies may vary depending on channel conditions and fathometer settings.