



Distribution Liability: The data represents the results of data collection/processing for a specific US Army Corps of Engineers project. It is only valid for its intended use, content, time and accuracy specifications. The user is responsible for the results and accuracy of the data. Approximation of the data for other than its intended purpose. Data Constants: Hydrographic survey data is subject to change rapidly due to several factors including but not limited to dredging operations, channel migration, and changes in bathymetry. The Army Corps of Engineers accepts no responsibility for changes in the hydrographical conditions which develop after the date of the survey. Prudent mariners should not rely solely upon it.

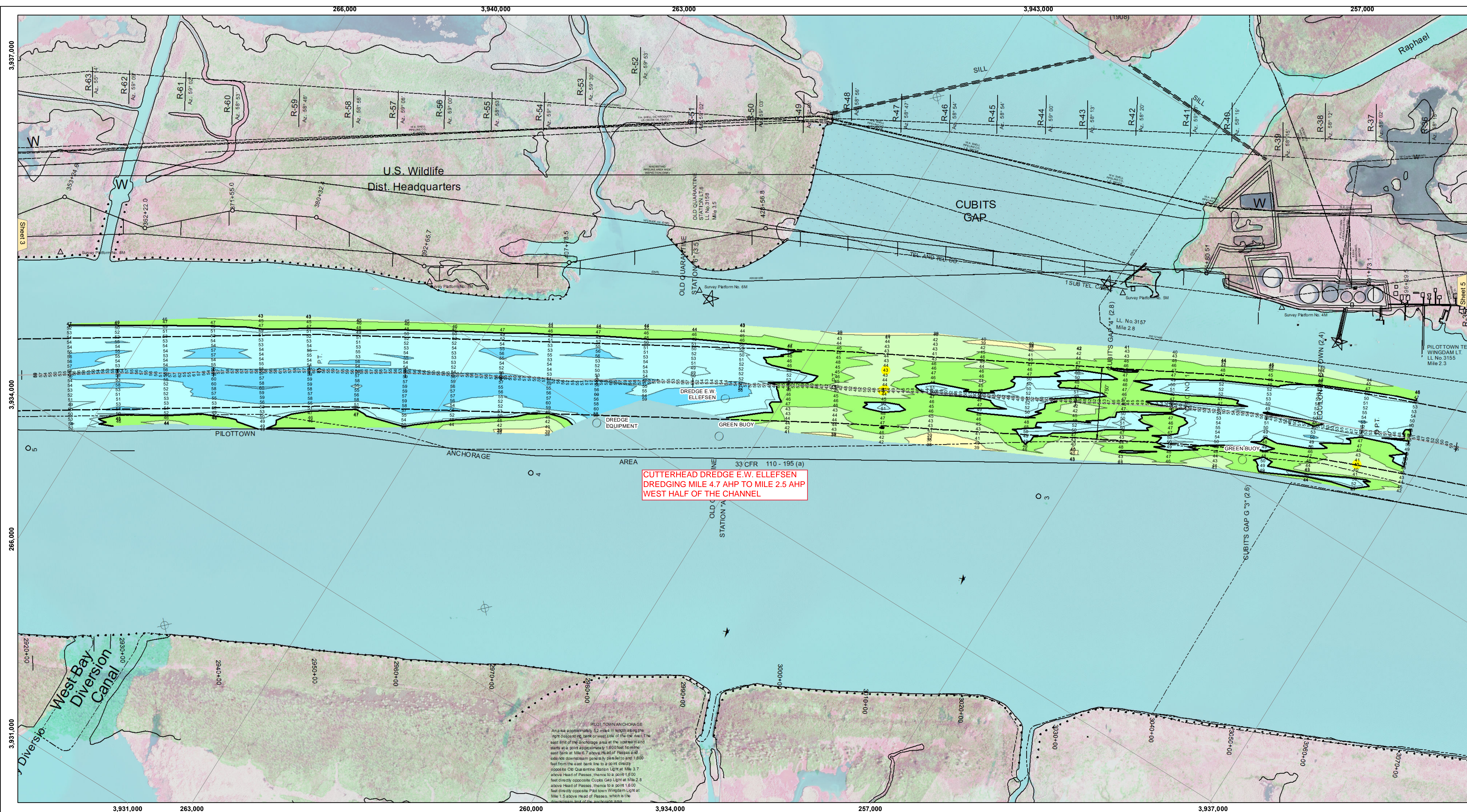
Submitted:	Surveyed By:	JH & DBD
Recommended:	Plotted By:	TSS
Approved:	Checked By:	MSK

U.S. ARMY CORPS OF ENGINEERS
NEW ORLEANS DISTRICT

**MISSISSIPPI RIVER - B.R. TO GULF
SOUTHWEST PASS - SHEET 4
SW_04_SWP_20200404_CS
04 April 2020**

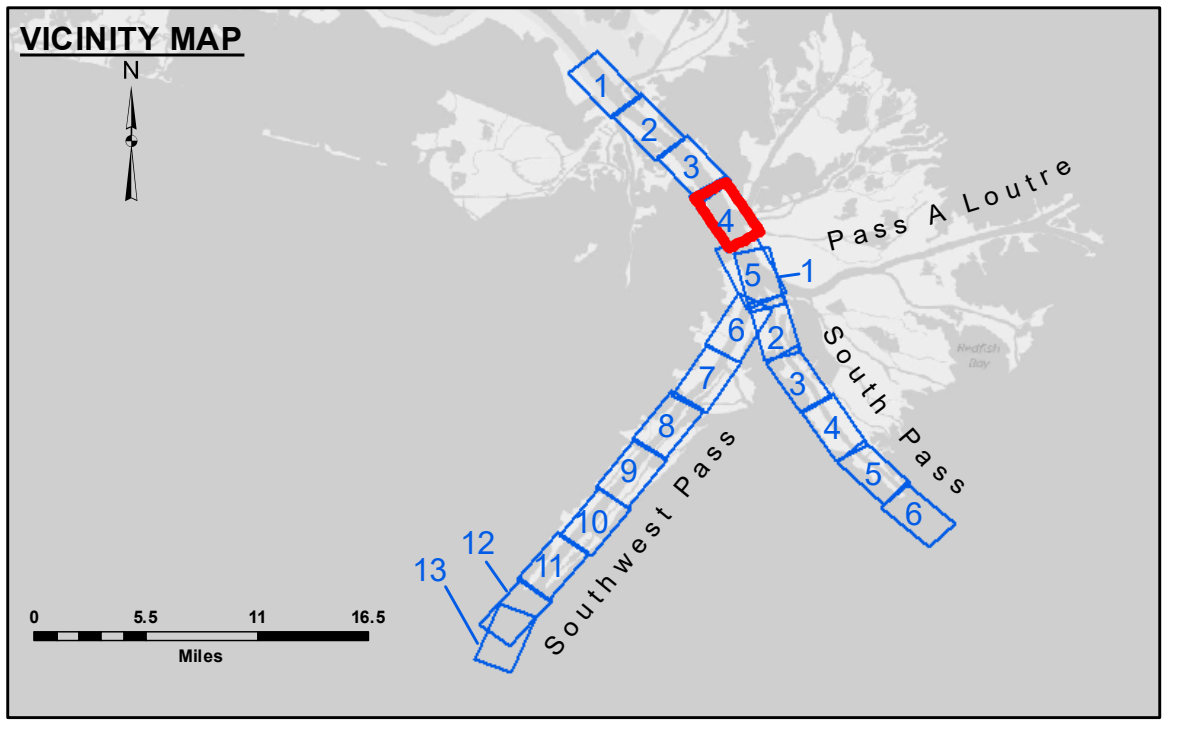
**Sheet Reference Number
4 of 13**

Revision Number:
4.0-20190702



**CUTTERHEAD DREDGE E.W. ELLEFSEN
DREDGING MILE 4.7 AHP TO MILE 2.5 AHP
WEST HALF OF THE CHANNEL**

PILOTTOWN ANCHORAGE
An area approximately 5.2 miles in length along the right side of the anchorage area at the western end starts at a point approximately 1,800 feet from the east bank at Mile 6.7 above Head of Passes and extends downstream generally parallel to and 1,800 feet from the east bank line to a point directly opposite Old Quarantine Station Light at Mile 2.7 above Head of Passes, thence to a point 1,800 feet directly opposite Cubits Gap Light at Mile 2.8 above Head of Passes, thence to a point 1,800 feet directly opposite Pilot Town Wingdam Light at Mile 1.5 above Head of Passes, which is the western limit of the anchorage area.



LEGEND

- - - Federal Navigation Channel	● Cable Area	□ Borrow Area	■ -10' and above
— Federal Navigation Center Line	□ Placement Area	● Shoalest Sounding**	■ -10' to -20'
— As-built Pipeline/Cable	□ Anchorage Area	★ Beacon, General	■ -20' to -30'
..... Unconfirmed Pipeline/Cable	⊗ Obstruction Point	◆ Red Navigation Buoy	■ -30' to -40'
— Project Depth Contour	★ Wrecks-Submerged	◆ Green Navigation Buoy	■ -40' to -45'
			■ -45' to -48.5'
			■ -48.5' to -55'
			■ -55' and below

Gage Reading: 2.0 MLLW @ PILOTTOWN @ 0915

Sea Conditions: CALM

Vessel Name: BLANCHARD

Survey Type: CONDITION, SB

Sounding Frequency*:** LOW

Vertical Datum:
Soundings are shown in feet and indicate depths below Mean Lower Low Water (MLLW, 07-11). Datum Relationships for gage 01525 as of July 2015:
0.0' NAVD88 = -0.3' MLLW = 3.20' MLG

Distances on the Mississippi River, above and below Head of Passes are shown at 1 mile intervals.

The location of navigation aids are base on and provided by the U.S. Coast Guard.

2016 Aerial Photography data source: Precision Aerial Reconnaissance, LLC (1998 DOQQ in green)

Reference is N.O.A. Navigation Chart No. 11361.

** Shoalest Sounding per Quarter per Reach.

*** High frequency (200 kHz) survey data represents the first signal return at a sounding location and will include suspended solids, known as "fluff", if present. Low frequency (24 kHz) survey data normally penetrates through this "fluff" layer to depict elevations of consolidated bottom material. Low frequency accuracies may vary depending on channel conditions and fathometer settings.

NOTES:

Horizontal Coordinate System:
North American Datum of 1983 (NAD83), projected to the State Plane Coordinate System (SPCS), Louisiana South Zone. Distance units in U.S. Survey Feet.

Vertical Datum:
Soundings are shown in feet and indicate depths below Mean Lower Low Water (MLLW, 07-11). Datum Relationships for gage 01525 as of July 2015:
0.0' NAVD88 = -0.3' MLLW = 3.20' MLG

Distances on the Mississippi River, above and below Head of Passes are shown at 1 mile intervals.

The location of navigation aids are base on and provided by the U.S. Coast Guard.

2016 Aerial Photography data source: Precision Aerial Reconnaissance, LLC (1998 DOQQ in green)

Reference is N.O.A. Navigation Chart No. 11361.

** Shoalest Sounding per Quarter per Reach.

*** High frequency (200 kHz) survey data represents the first signal return at a sounding location and will include suspended solids, known as "fluff", if present. Low frequency (24 kHz) survey data normally penetrates through this "fluff" layer to depict elevations of consolidated bottom material. Low frequency accuracies may vary depending on channel conditions and fathometer settings.