

DISTRIBUTION LIABILITY: The data represents the results of data collection/processing for a specific US Army Corps of Engineers project. It is only valid for its intended use, content, time and accuracy specifications. The user is responsible for the results of any use of this data for purposes not intended for its intended purpose.

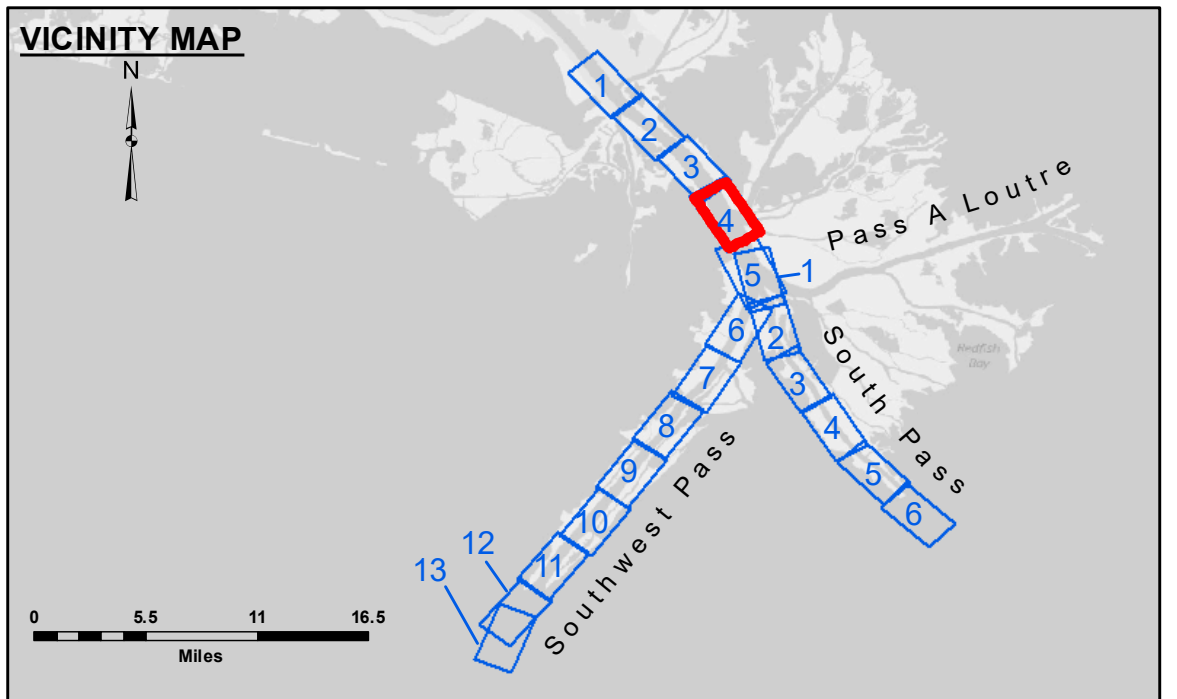
Data: Hydrographic survey data is subject to change rapidly due to several factors including but not limited to dredging activities, channel migration, and other factors. The user is responsible for the accuracy of the data for their intended purpose.

Disclaimer: The information depicted on this map represents the results of a survey and is not intended to be used as a basis for any legal claim or liability. The information is provided as a service and is not intended to be used as a basis for any legal claim or liability.

U.S. ARMY CORPS OF ENGINEERS NEW ORLEANS DISTRICT	Surveyed By: JH & RCC	Plotted By: TSS	Checked By: MSK
Submitted:	Recommended: Chief, Survey Section	Approved: Chief, Waterways Maintenance Section	

**MISSISSIPPI RIVER - B.R. TO GULF
SOUTHWEST PASS - SHEET 4
SW_04_SWP_20200411_CS
11 April 2020**

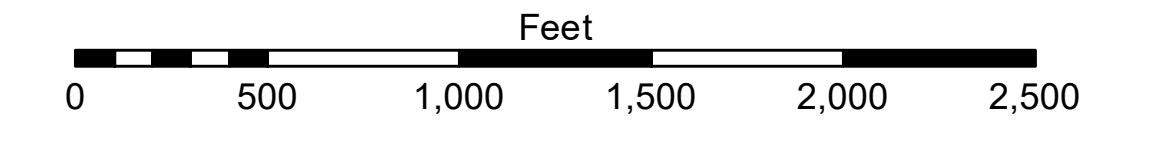
**Sheet Reference Number
4 of 13**



LEGEND			
--- Federal Navigation Channel	○ Cable Area	□ Borrow Area	■ -10' and above
— Federal Navigation Center Line	□ Placement Area	● Shoalest Sounding**	■ -10' to -20'
— As-built Pipeline/Cable	□ Anchorage Area	★ Beacon, General	■ -20' to -30'
..... Unconfirmed Pipeline/Cable	⊗ Obstruction Point	◆ Red Navigation Buoy	■ -30' to -40'
— Project Depth Contour	⚓ Wrecks-Submerged	◆ Green Navigation Buoy	■ -40' to -45'
			■ -45' to -48.5'
			■ -48.5' to -55'
			■ -55' and below



Gage Reading: 2.9 MLLW @ PILOT TOWN @ 1100
 Sea Conditions: CALM
 Vessel Name: JOHN BOPP
 Survey Type: CONDITION, SB
 Sounding Frequency***: LOW



NOTES:
 Horizontal Coordinate System: North American Datum of 1983 (NAD83), projected to the State Plane Coordinate System (SPCS), Louisiana South Zone. Distance units in U.S. Survey Feet.
 Vertical Datum: Soundings are shown in feet and indicate depths below Mean Lower Low Water (MLLW, 07-11). Datum Relationships for gage 01525 as of July 2015: 0.0' NAVD86 = -0.3' MLLW = 3.20' MLG
 Distances on the Mississippi River, above and below Head of Passes are shown at 1 mile intervals.
 The location of navigation aids are base on and provided by the U.S. Coast Guard.
 2016 Aerial Photography data source: Precision Aerial Reconnaissance, LLC (1998 DOQQ in green)
 Reference is N.O.A. Navigation Chart No. 11361.
 ** Shoalest Sounding per Quarter per Reach.
 *** High frequency (200 kHz) survey data represents the first signal return at a sounding location and will include suspended solids, known as "fluff", if present. Low frequency (24 kHz) survey data normally penetrates through this "fluff" layer to depict elevations of consolidated bottom material. Low frequency accuracies may vary depending on channel conditions and fathometer settings.