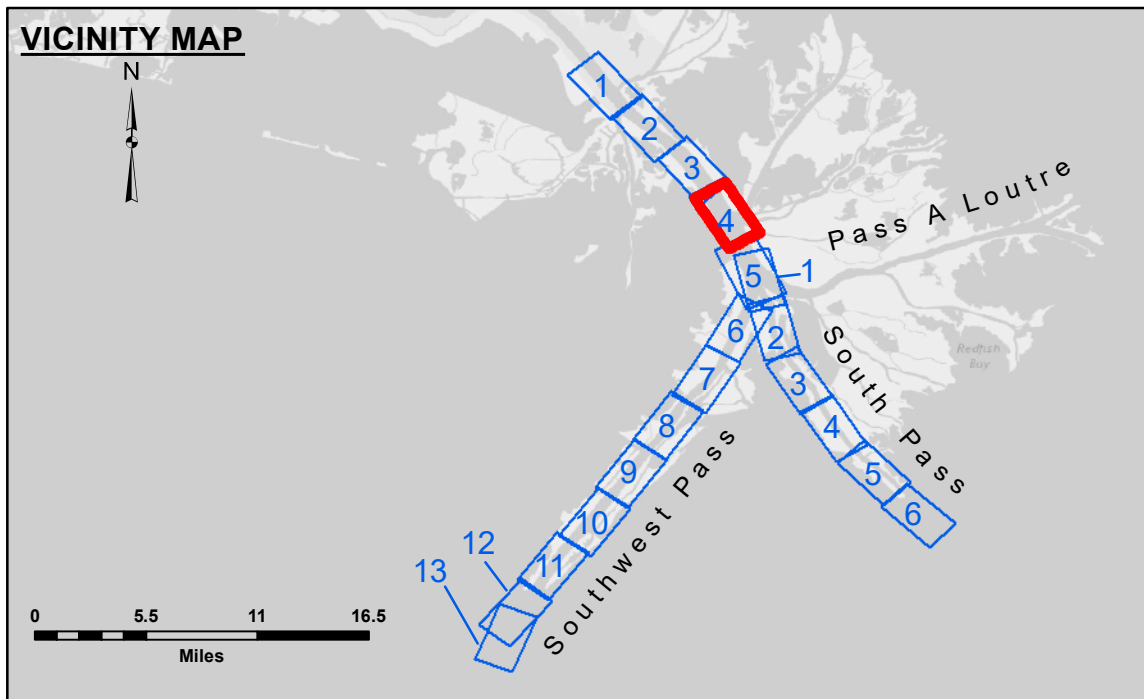


**Distribution Liability:** The data represents the results of data collection for a specific US Army Corps of Engineers project. It is only valid for its intended use, content, time and accuracy specifications. The user is responsible for the results of any use of the data for other than its intended purpose. The Corps of Engineers does not warrant the accuracy of the data for other than its intended purpose. The Corps of Engineers does not warrant the accuracy of the data for other than its intended purpose. The Corps of Engineers does not warrant the accuracy of the data for other than its intended purpose. The Corps of Engineers does not warrant the accuracy of the data for other than its intended purpose.

Submitted:	Surveyed By: JH & RCC
Recommended:	Plotted By: TSS
Approved:	Checked By: MSK

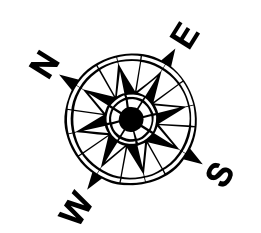
U.S. ARMY CORPS OF ENGINEERS  
NEW ORLEANS DISTRICT

**MISSISSIPPI RIVER - B. R. TO GULF  
SOUTHWEST PASS - SHEET 4  
SW\_04\_SWP\_20200505\_CS\_PRO  
05 May 2020**

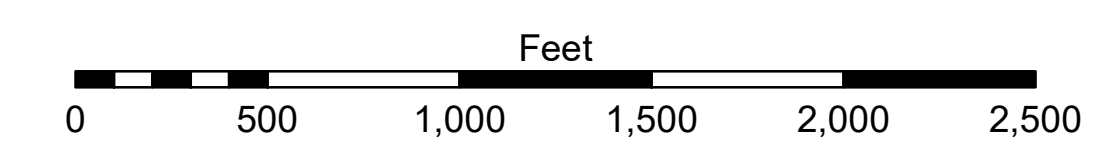


**LEGEND**

--- Federal Navigation Channel	● Cable Area	□ Borrow Area	■ -10' and above
— Federal Navigation Center Line	□ Placement Area	● Shoalest Sounding**	■ -10' to -20'
— As-built Pipeline/Cable	□ Anchorage Area	★ Beacon, General	■ -20' to -30'
..... Unconfirmed Pipeline/Cable	⊗ Obstruction Point	◆ Red Navigation Buoy	■ -30' to -40'
— Project Depth Contour	★ Wrecks-Submerged	◆ Green Navigation Buoy	■ -40' to -45'
			■ -45' to -48.5'
			■ -48.5' to -55'
			■ -55' and below



Gage Reading: 2.3 MLLW @ PILOT TOWN @ 1255  
 Sea Conditions: CALM  
 Vessel Name: JOHN BOPP  
 Survey Type: CONDITION, SB  
 Sounding Frequency\*\*\*: LOW



**NOTES:**  
 Horizontal Coordinate System: North American Datum of 1983 (NAD83), projected to the State Plane Coordinate System (SPCS), Louisiana South Zone. Distance units in U.S. Survey Feet.  
 Vertical Datum: Soundings are shown in feet and indicate depths below Mean Lower Low Water (MLLW, 07-11). Datum Relationships for gage 01525 as of July 2015: 0.0' NAVD88 = -0.3' MLLW = 3.20' MLG  
 Distances on the Mississippi River, above and below Head of Passes are shown at 1 mile intervals.  
 The location of navigation aids are base on and provided by the U.S. Coast Guard.  
 2016 Aerial Photography data source: Precision Aerial Reconnaissance, LLC (1998 DOQQ in green)  
 Reference is N.O.A.A. Navigation Chart No. 11361.  
 \*\* Shoalest Sounding per Quarter per Reach.  
 \*\*\* High frequency (200 kHz) survey data represents the first signal return at a sounding location and will include suspended solids, known as "fluff", if present. Low frequency (24 kHz) survey data normally penetrates through this "fluff" layer to depict elevations of consolidated bottom material. Low frequency accuracies may vary depending on channel conditions and fathometer settings.

**Sheet Reference Number  
4 of 13**

Revision Number: 4.0-20190702