



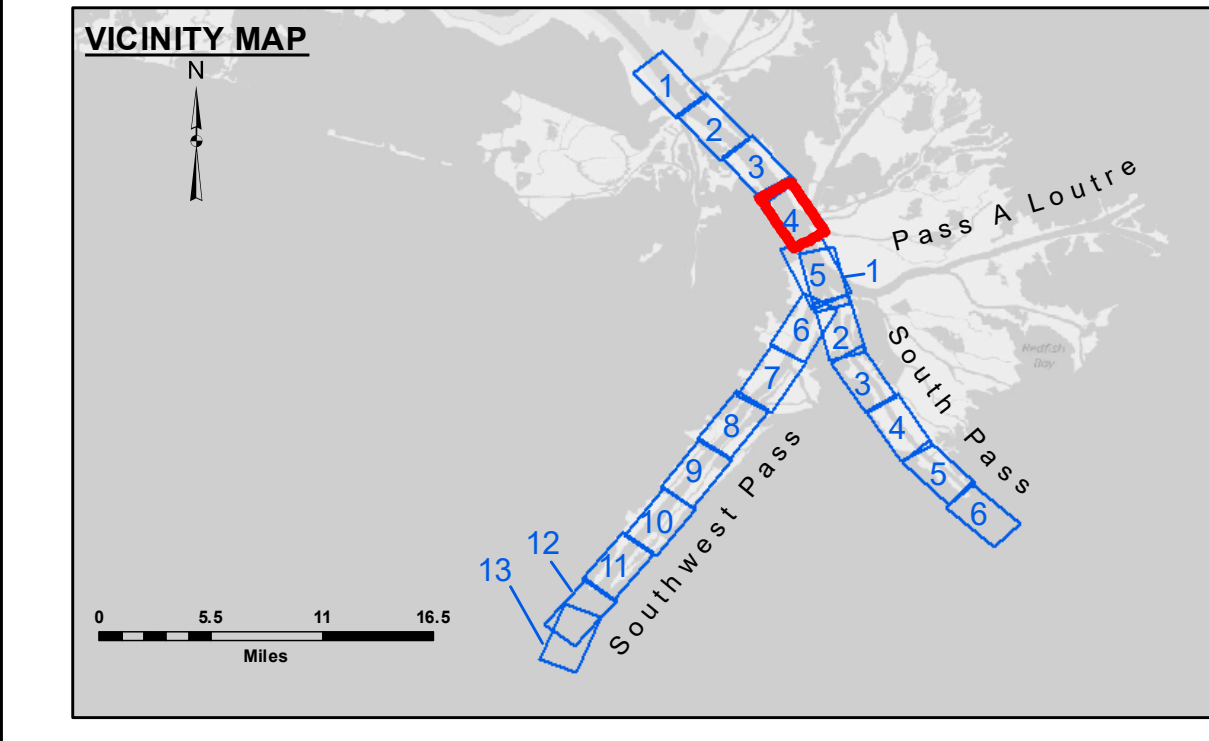
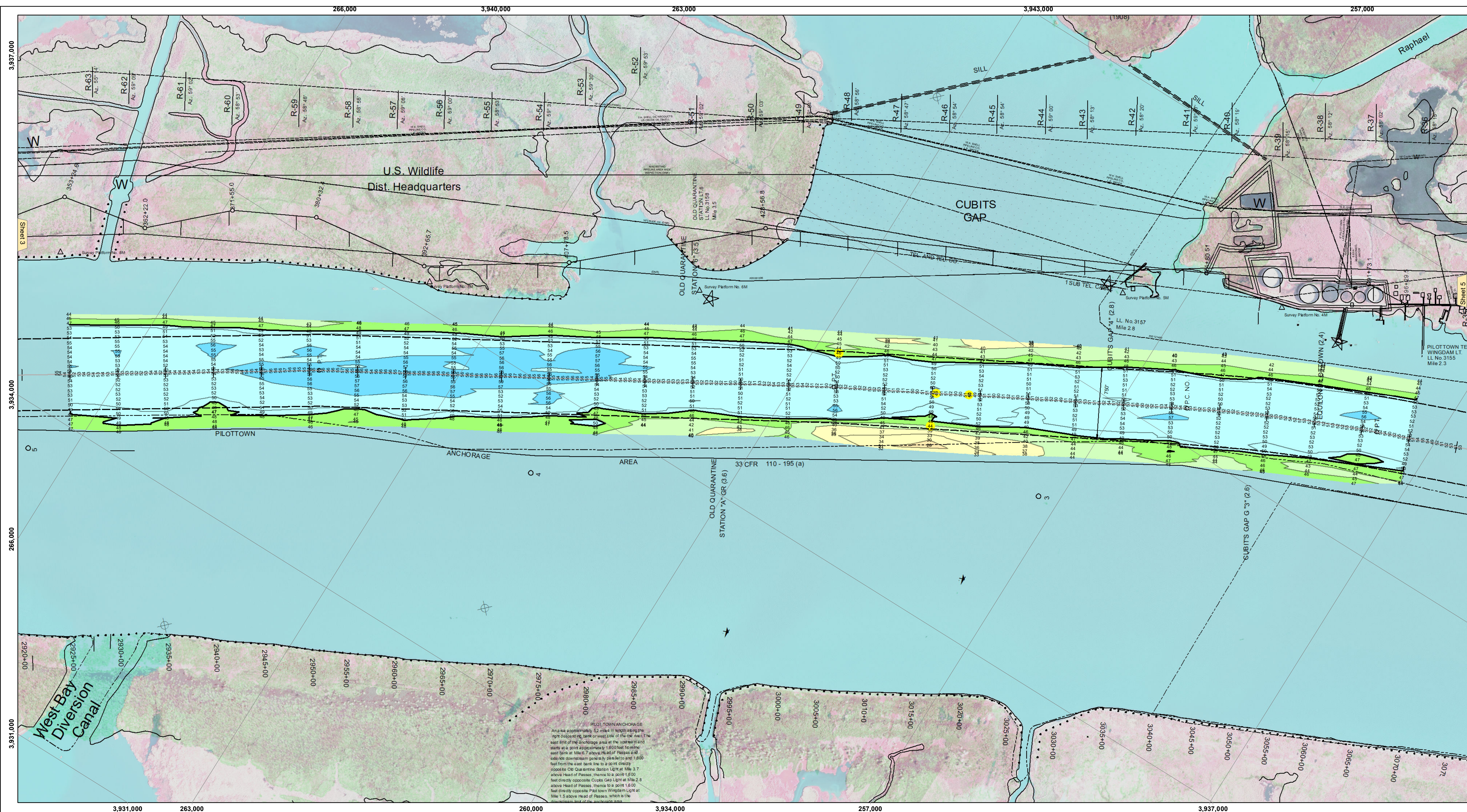
Accession: The United States Government furnishes these data and the recipient accepts and uses them with the express understanding that the data are not to be used for any purpose other than that for which they were originally prepared, and that the data are not to be used for any purpose other than that for which they were originally prepared.

Table with 2 columns: Surveyed By (DBD & JJC), Plotted By (LLB), Checked By (MSK). Includes U.S. Army Corps of Engineers New Orleans District header.

MISSISSIPPI RIVER - B.R. TO GULF SOUTHWEST PASS - SHEET 4 SW_04_SWP_20200622_CS 22 June 2020

Sheet Reference Number 4 of 13

Revision Number: 4.1-20191105



LEGEND table with 4 columns: Line styles (Federal Navigation Channel, As-built Pipeline/Cable, etc.), Symbols (Cable Area, Obstruction Point, etc.), Colors (Borrow Area, Shoalest Sounding, etc.), and Depth Ranges (-10' and above to -55' and below).

Navigation data block including a compass rose, scale bar (0-2500 Feet), and text: Gage Reading: 2.2 MLLW @ PILOT TOWN @ 1000, Sea Conditions: CHOPPY, Vessel Name: OB-173, Survey Type: CONDITION, SB, Sounding Frequency: LOW.

NOTES: Horizontal Coordinate System: North American Datum of 1983 (NAD83), projected to the State Plane Coordinate System (SPCS), Louisiana South Zone. Vertical Datum: Soundings are shown in feet and indicate depths below Mean Lower Low Water (MLLW, 07-11). Reference is N.O.A. Navigation Chart No. 11361.