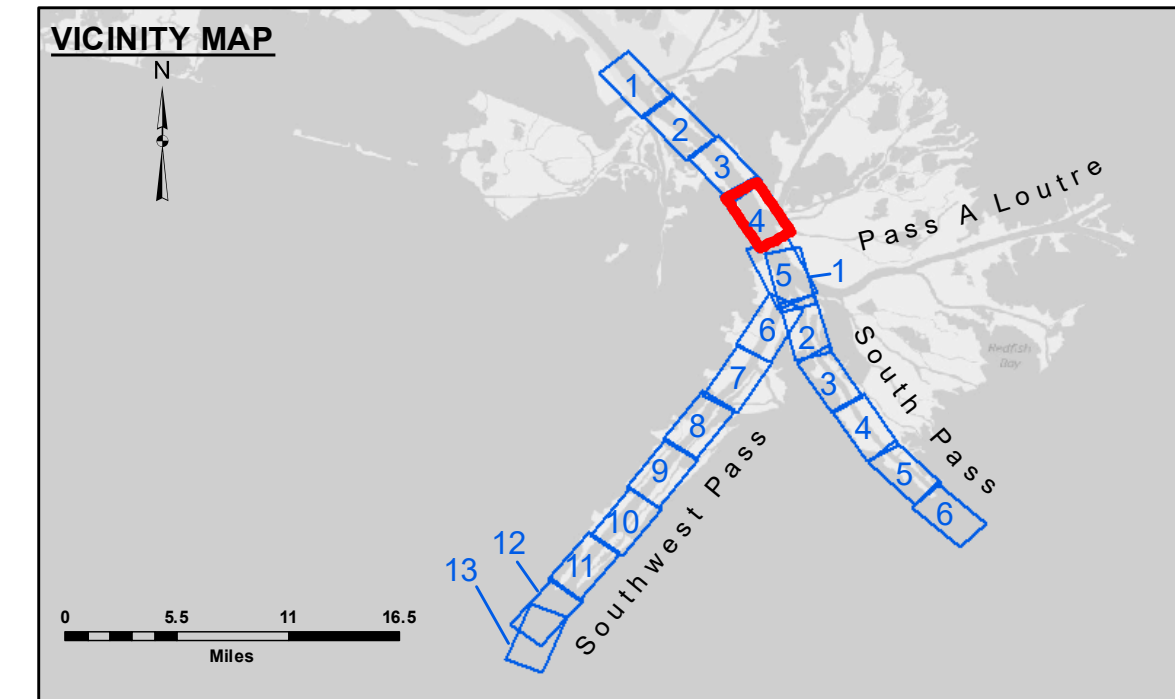


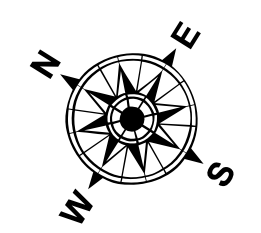
PERMANENT: These data and the recipient accepts and uses them with the express understanding that the recipient assumes all responsibility for the accuracy, reliability, usability or suitability for any particular purpose of the information. The user is responsible for the results and any errors. The user is responsible for the results and any errors. The user is responsible for the results and any errors.

Table with columns: Surveyed By (JUC & MGF), Plotted By (LLB), Checked By (MSK). Includes headers for U.S. ARMY CORPS OF ENGINEERS, NEW ORLEANS DISTRICT.

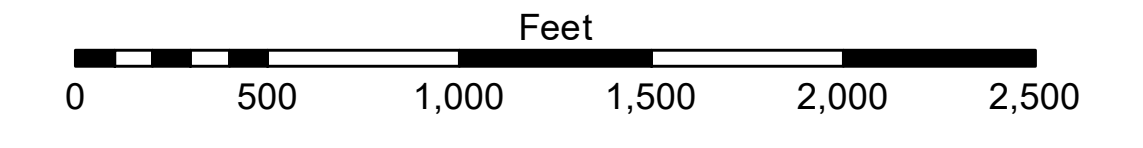
MISSISSIPPI RIVER - B.R. TO GULF SOUTHWEST PASS - SHEET 4 SW_04_SWP_20201015_CS 15 October 2020



LEGEND: Federal Navigation Channel, Federal Navigation Center Line, As-built Pipeline/Cable, Unconfirmed Pipeline/Cable, Project Depth Contour, Cable Area, Placement Area, Anchorage Area, Obstruction Point, Wrecks-Submerged, Borrow Area, Shoalest Sounding**, Beacon, General, Red Navigation Buoy, Green Navigation Buoy. Color key for depth contours: -10' and above, -10' to -20', -20' to -30', -30' to -40', -40' to -45', -45' to -48.5', -48.5' to -55', -55' and below.



Gage Reading: 1.0 MLLW @ PILOT TOWN @ 1025
Sea Conditions: CALM
Vessel Name: BEAUVAIS
Survey Type: CONDITION, SB
Sounding Frequency***: LOW



NOTES: Horizontal Coordinate System: North American Datum of 1983 (NAD83), projected to the State Plane Coordinate System (SPCS), Louisiana South Zone. Vertical Datum: Soundings are shown in feet and indicate depths below Mean Lower Low Water (MLLW, 07-11). The location of navigation aids are base on and provided by the U.S. Coast Guard.