

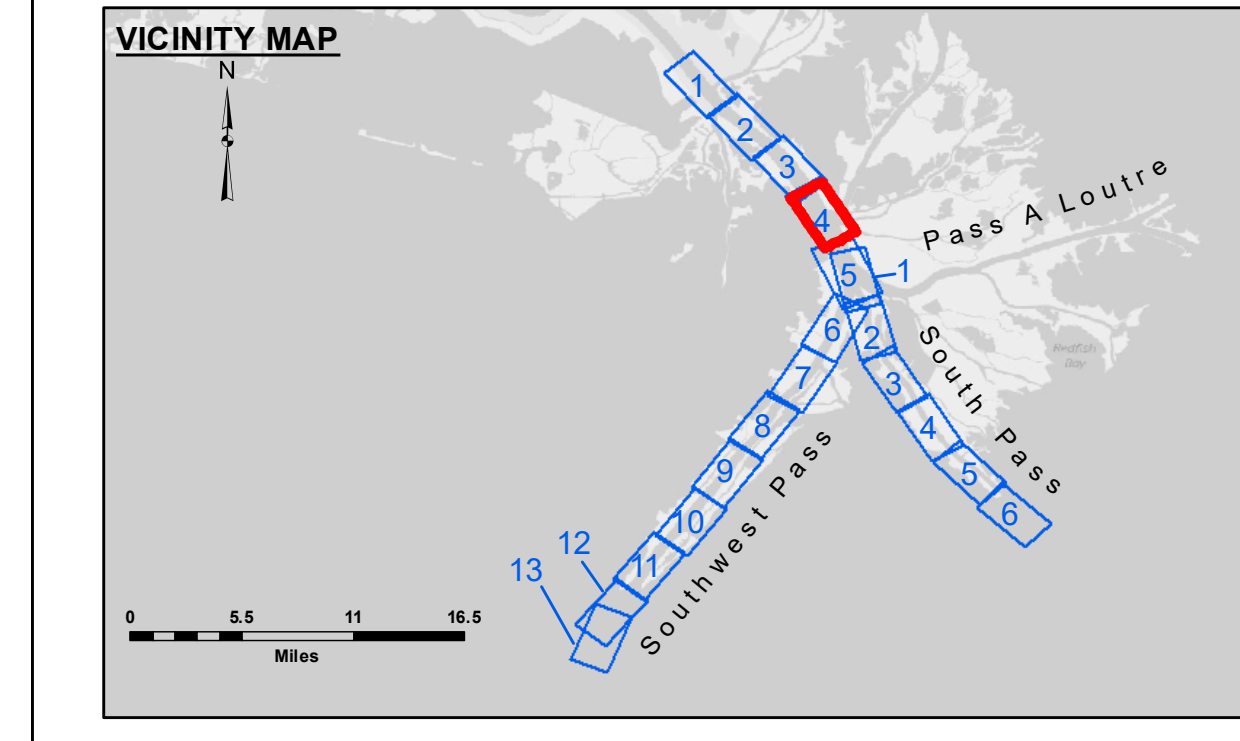
**DISTRIBUTION LIABILITY:** The data represents the results of data collection/processing for a specific US Army Corps of Engineers project. It is only valid for its intended use, content, time and accuracy specifications. The user is responsible for the results and accuracy of the data. Approximation of the data for other than its intended purpose. Data Constants: Hydrographic survey data is subject to change rapidly due to several factors including but not limited to dredging operations, channel shifts, and changes in the bathymetry of the river. The user is responsible for the accuracy of the data. The information depicted on the map represents the results of a survey and is not to be used for navigation purposes. It is not to be considered a representation of the general condition existing at that time.

Submitted:	Surveyed By: SURVEY_CREW
Recommended:	Plotted By: TSS
Approved:	Checked By: MSK

**MISSISSIPPI RIVER - B.R. TO GULF  
SOUTHWEST PASS - SHEET 4  
SW\_04\_SWP\_20210513\_CS  
13 May 2021**

**Sheet Reference Number  
4 of 13**

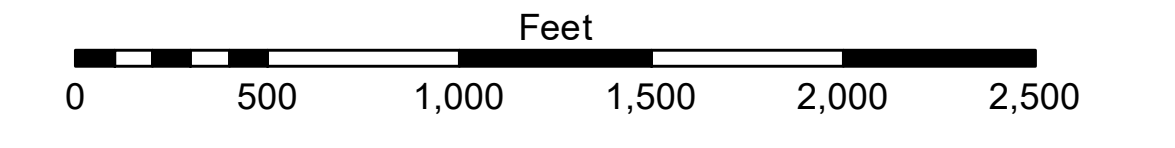
Revision Number:  
4.1-20191105



LEGEND	
--- Federal Navigation Channel	● Cable Area
— Federal Navigation Center Line	■ Placement Area
— As-built Pipeline/Cable	□ Anchorage Area
..... Unconfirmed Pipeline/Cable	⊗ Obstruction Point
— Project Depth Contour	★ Wrecks-Submerged
□ Borrow Area	★ Beacon, General
● Shoalest Sounding**	◆ Red Navigation Buoy
◆ Green Navigation Buoy	



Gage Reading: 1.2 MLLW @ PILOT TOWN @ 1030  
Sea Conditions: CALM  
Vessel Name: TECHE  
Survey Type: CONDITION, SB  
Sounding Frequency\*\*\*: LOW



**NOTES:**  
Horizontal Coordinate System: North American Datum of 1983 (NAD83), projected to the State Plane Coordinate System (SPCS), Louisiana South Zone. Distance units in U.S. Survey Feet.  
Vertical Datum: Soundings are shown in feet and indicate depths below Mean Lower Low Water (MLLW, 12-16). Datum Relationships for gage 01525 as of March 2020: 0.0' NAVD86, 2009.55 = -0.53' MLLW = 2.97' MLG  
Distances on the Mississippi River, above and below Head of Passes are shown at 1 mile intervals.  
The location of navigation aids are base on and provided by the U.S. Coast Guard.  
2016 Aerial Photography data source: Precision Aerial Reconnaissance, LLC (1998 DOQQ in green)  
Reference is N.O.A. Navigation Chart No. 11361.  
\*\* Shoalest Sounding per Quarter per Reach.  
\*\*\* High frequency (200 kHz) survey data represents the first signal return at a sounding location and will include suspended solids, known as "fluff", if present. Low frequency (24 kHz) survey data normally penetrates through this "fluff" layer to depict elevations of consolidated bottom material. Low frequency accuracies may vary depending on channel conditions and fathometer settings.