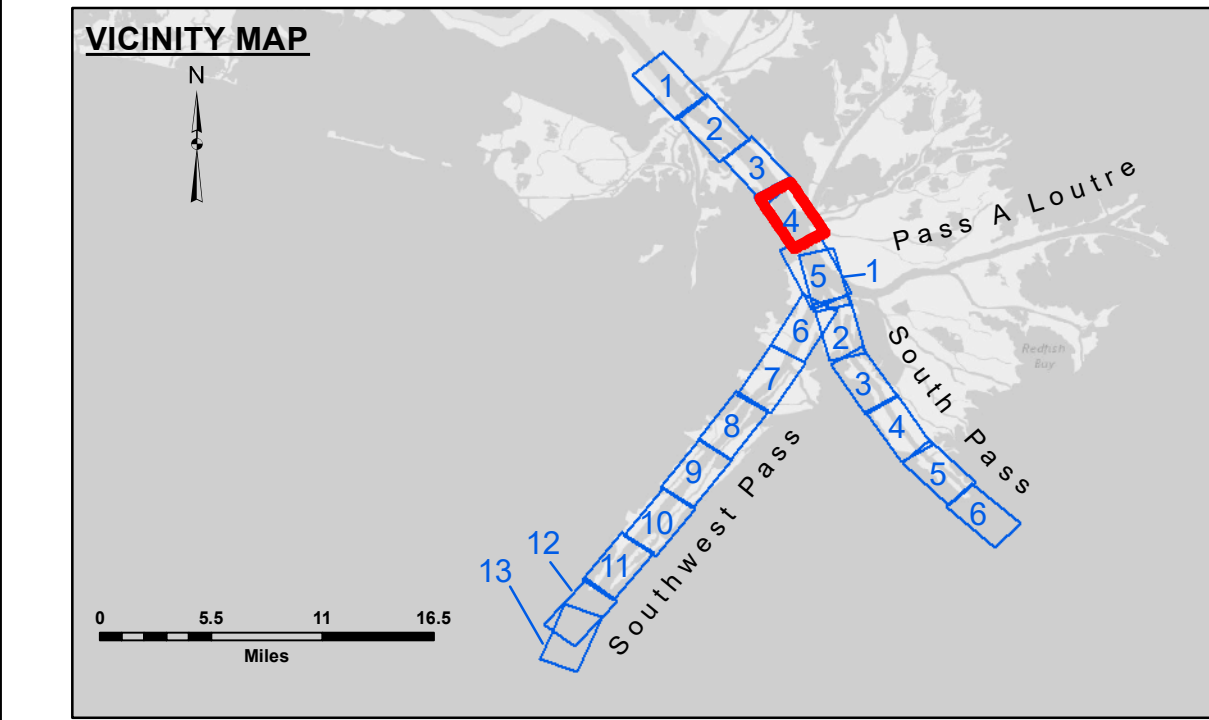
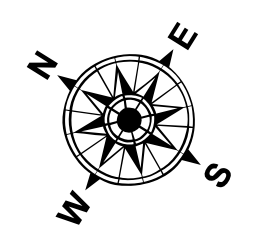


DREDGE GLENN EDWARDS
DREDGING STATION 2925+00 TO STATION 3065+00
FULL CHANNEL WIDTH

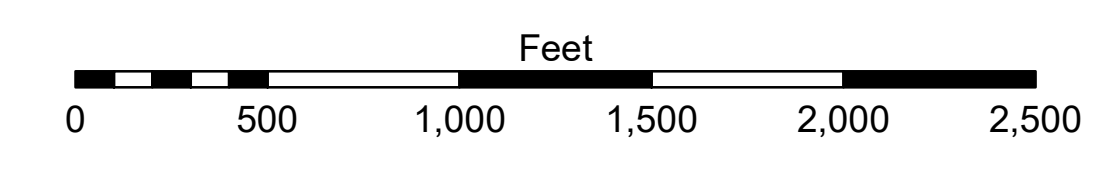


LEGEND

--- Federal Navigation Channel	● Cable Area	□ Borrow Area	■ -10' and above
— Federal Navigation Center Line	□ Placement Area	● Shoalest Sounding**	■ -10' to -20'
— As-built Pipeline/Cable	□ Anchorage Area	★ Beacon, General	■ -20' to -30'
..... Unconfirmed Pipeline/Cable	⊗ Obstruction Point	◆ Red Navigation Buoy	■ -30' to -40'
— Project Depth Contour	★ Wrecks-Submerged	◆ Green Navigation Buoy	■ -40' to -45'
			■ -45' to -50'
			■ -50' to -55'
			■ -55' and below



Gage Reading: 1.4 MLLW @ PILOT TOWN @ 1210
 Sea Conditions: CHOPPY
 Vessel Name: BLANCHARD
 Survey Type: CONDITION, SB
 Sounding Frequency***: LOW



NOTES:
 Horizontal Coordinate System: North American Datum of 1983 (NAD83), projected to the State Plane Coordinate System (SPCS), Louisiana South Zone. Distance units in U.S. Survey Feet.
 Vertical Datum: Soundings are shown in feet and indicate depths below Mean Lower Low Water (MLLW, 12-16). Datum Relationships for gage 01525 as of March 2020: 0.0' NAVD86, 2009.55 = -0.53' MLLW = 2.97' MLG
 Distances on the Mississippi River, above and below Head of Passes are shown at 1 mile intervals.
 The location of navigation aids are base on and provided by the U.S. Coast Guard.
 2016 Aerial Photography data source: Precision Aerial Reconnaissance, LLC (1998 DOQQ in green)
 Reference is N.O.A.A. Navigation Chart No. 11361.
 ** Shoalest Sounding per Quarter per Reach.
 *** High frequency (200 kHz) survey data represents the first signal return at a sounding location and will include suspended solids, known as "fluff", if present. Low frequency (24 kHz) survey data normally penetrates through this "fluff" layer to depict elevations of consolidated bottom material. Low frequency accuracies may vary depending on channel conditions and fathometer settings.



DISTRIBUTION LIABILITY: The data represents the results of data collection for a specific US Army Corps of Engineers project. It is only valid for its intended use, content, time and accuracy specifications. The user is responsible for the results of any use of the data for other than its intended purpose. The Corps of Engineers does not warrant the accuracy of the data for other than its intended purpose. Data Constants: Hydrographic survey data is subject to change and is not intended to be used for navigation purposes. The Corps of Engineers does not warrant the accuracy of the data for other than its intended purpose. The information depicted on this map represents the results of a survey conducted on the date of the survey. The Corps of Engineers does not warrant the accuracy of the data for other than its intended purpose. The information depicted on this map represents the results of a survey conducted on the date of the survey. The Corps of Engineers does not warrant the accuracy of the data for other than its intended purpose.

U.S. ARMY CORPS OF ENGINEERS
NEW ORLEANS DISTRICT

Submitted:	Surveyed By: JTB & DED
Recommended: Chief, Survey Section	Plotted By: TSS
Approved: Chief, Waterways Maintenance Section	Checked By: MSK

MISSISSIPPI RIVER - B.R. TO GULF
 SOUTHWEST PASS - SHEET 4
 SW_04_SWP_20210518_CS_PRO
 18 May 2021

Sheet Reference Number
 4 of 13

Revision Number:
 4.1-20191105