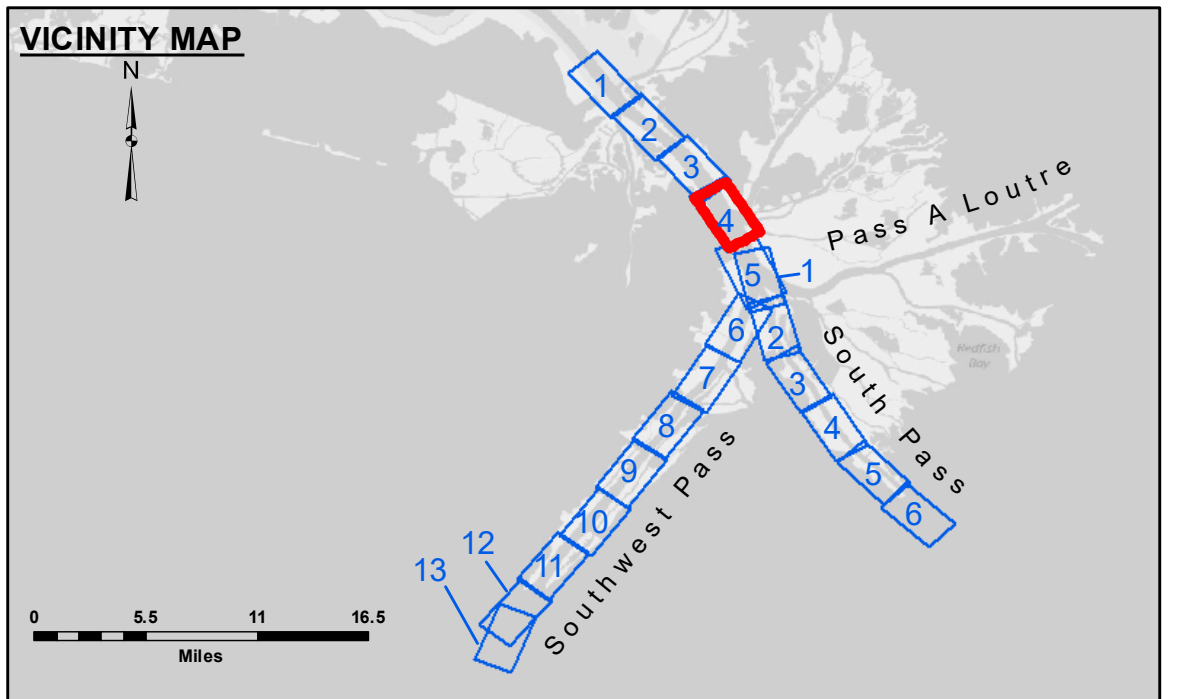


DISCLAIMER: The United States Government furnishes these data and the recipient accepts and uses them with the express understanding that the data are not to be used for any purpose other than that for which they were originally prepared. The user is responsible for the results of any use of the data for other than the intended purpose. The information depicted on the map represents the results of a survey conducted on or about the date of the survey. The information is not to be used for any purpose other than that for which it was originally prepared. The user is responsible for the results of any use of the data for other than the intended purpose. The information depicted on the map represents the results of a survey conducted on or about the date of the survey. The information is not to be used for any purpose other than that for which it was originally prepared. The user is responsible for the results of any use of the data for other than the intended purpose.

Submitted:	JUC & MGF
Recommended:	TSS
Approved:	MSK

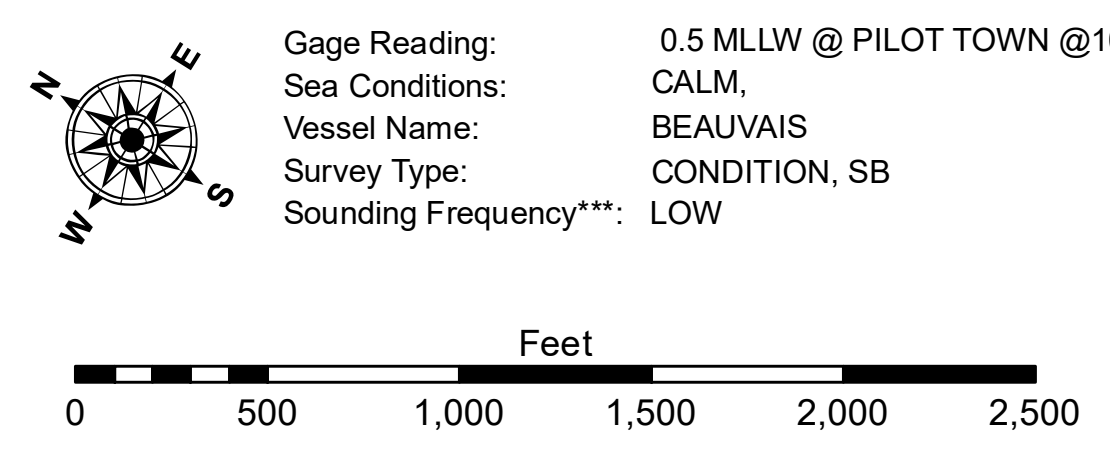
U.S. ARMY CORPS OF ENGINEERS
NEW ORLEANS DISTRICT

**MISSISSIPPI RIVER - B.R. TO GULF
SOUTHWEST PASS - SHEET 4
SW_04_SWP_20210825_CS
25 August 2021**



LEGEND

--- Federal Navigation Channel	● Cable Area	□ Borrow Area	■ -10' and above
— Federal Navigation Center Line	■ Placement Area	● Shoalest Sounding**	■ -10' to -20'
— As-built Pipeline/Cable	★ Beacon, General	★ Red Navigation Buoy	■ -20' to -30'
..... Unconfirmed Pipeline/Cable	⊗ Obstruction Point	◆ Green Navigation Buoy	■ -30' to -40'
— Project Depth Contour	⚓ Wrecks-Submerged		■ -40' to -45'
			■ -45' to -50'
			■ -50' to -55'
			■ -55' and below



NOTES:
Horizontal Coordinate System: North American Datum of 1983 (NAD83), projected to the State Plane Coordinate System (SPCS), Louisiana South Zone. Distance units in U.S. Survey Feet.
Vertical Datum: Soundings are shown in feet and indicate depths below Mean Lower Low Water (MLLW, 12-16). Datum Relationships for gage 01525 as of March 2020: 0.0' NAVD83, 2009.55 = -0.53' MLLW = 2.97' MGL
Distances on the Mississippi River, above and below Head of Passes are shown at 1 mile intervals.
The location of navigation aids are base on and provided by the U.S. Coast Guard.
2016 Aerial Photography data source: Precision Aerial Reconnaissance, LLC (1998 DOQQ in green)
Reference is N.O.A. Navigation Chart No. 11361.
** Shoalest Sounding per Quarter per Reach.
*** High frequency (200 kHz) survey data represents the first signal return at a sounding location and will include suspended solids, known as "fluff", if present. Low frequency (24 kHz) survey data normally penetrates through this "fluff" layer to depict elevations of consolidated bottom material. Low frequency accuracies may vary depending on channel conditions and fathometer settings.

**Sheet Reference Number
4 of 13**

Revision Number:
4.2-20210825