

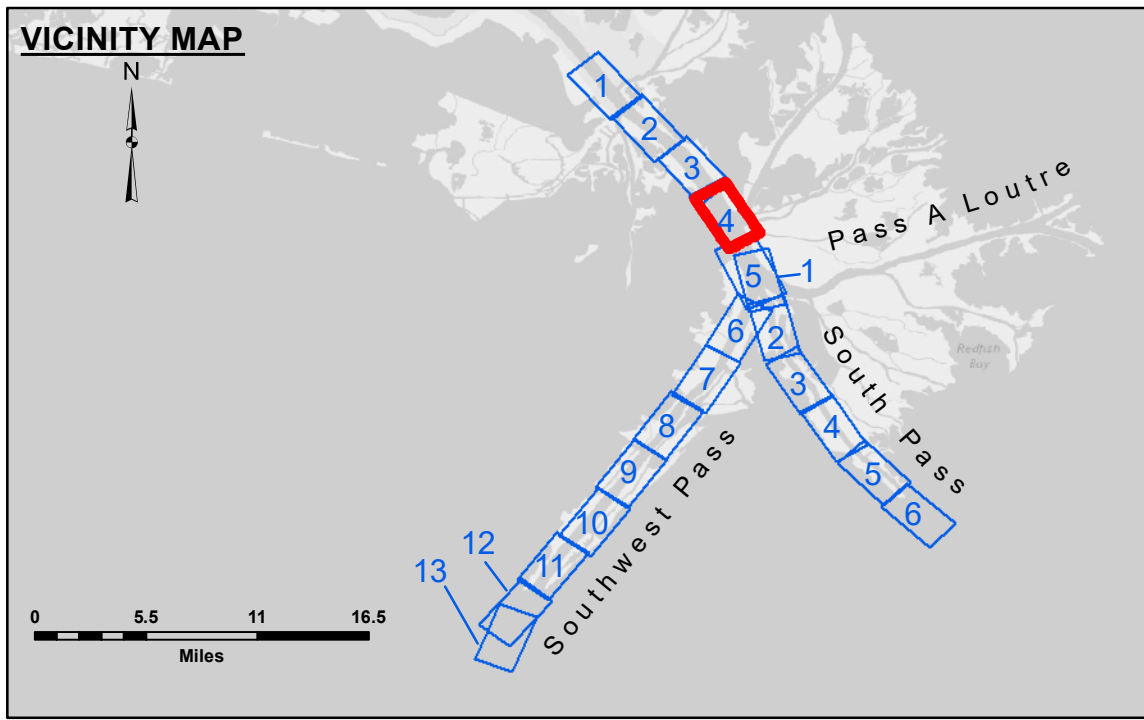
DISTRICT: The United States Government furnishes these data and the recipient accepts and uses them with the express understanding that the data are not to be used for any purpose other than that for which they were originally prepared, or implied concerning the accuracy, completeness, reliability, usability or suitability for any particular purpose of the recipient. The user is responsible for the results of any use of the data under no liability whatsoever to any person by reason of any use of the data. The recipient agrees to indemnify and hold the Corps of Engineers harmless from and against all claims, damages, losses and expenses, including reasonable attorneys' fees, that may be incurred by the Corps of Engineers as a result of the use of the data for any purpose other than that for which they were originally prepared. The recipient may not transfer these data to others without also transferring this Disclaimer. The information depicted on this map represents the results of a survey conducted by the Corps of Engineers and is not to be considered a representation of the general condition existing at that time.

Surveyed By:	JTB & DED
Plotted By:	TSS
Recommended:	Chief, Survey Section
Approved:	Chief, Waterways Maintenance Section

**MISSISSIPPI RIVER - B. R. TO GULF
SOUTHWEST PASS - SHEET 4
SW_04_SWP_20230502_CS_PRO
02 May 2023**

**Sheet Reference Number
4 of 13**

Revision Number:
4.2-302040-20



LEGEND	
--- Federal Navigation Channel	● Cable Area
— Federal Navigation Center Line	■ Placement Area
— As-built Pipeline/Cable	□ Anchorage Area
..... Unconfirmed Pipeline/Cable	⊗ Obstruction Point
— Project Depth Contour	★ Wrecks-Submerged
□ Borrow Area	★ Beacon, General
● Shoalest Sounding**	◆ Red Navigation Buoy
◆ Green Navigation Buoy	

NOTES:

Horizontal Coordinate System: North American Datum of 1983 (NAD83), projected to the State Plane Coordinate System (SPCS), Louisiana South Zone. Distance units in U.S. Survey Feet.

Vertical Datum: 0.4 MLLW @ PILOT TOWN @ 1330

Sea Conditions: CALM

Vessel Name: BLANCHARD

Survey Type: CONDITION, SB

Sounding Frequency***: LOW

Distances on the Mississippi River, above and below Head of Passes are shown at 1 mile intervals.

The location of navigation aids are base on and provided by the U.S. Coast Guard.

2022 Aerial Photography data source: Optimal GEO (1998 DOQQ in green)

Reference is N.O.A.A. Navigation Chart No. 11361.

** Shoalest Sounding per Quarter Per Reach.

*** High frequency (200 kHz) survey data represents the first signal return at a sounding location and will include suspended solids, known as "fluff", if present. Low frequency (24 kHz) survey data normally penetrates through this "fluff" layer to depict elevations of consolidated bottom material. Low frequency accuracies may vary depending on channel conditions and fathometer settings.

