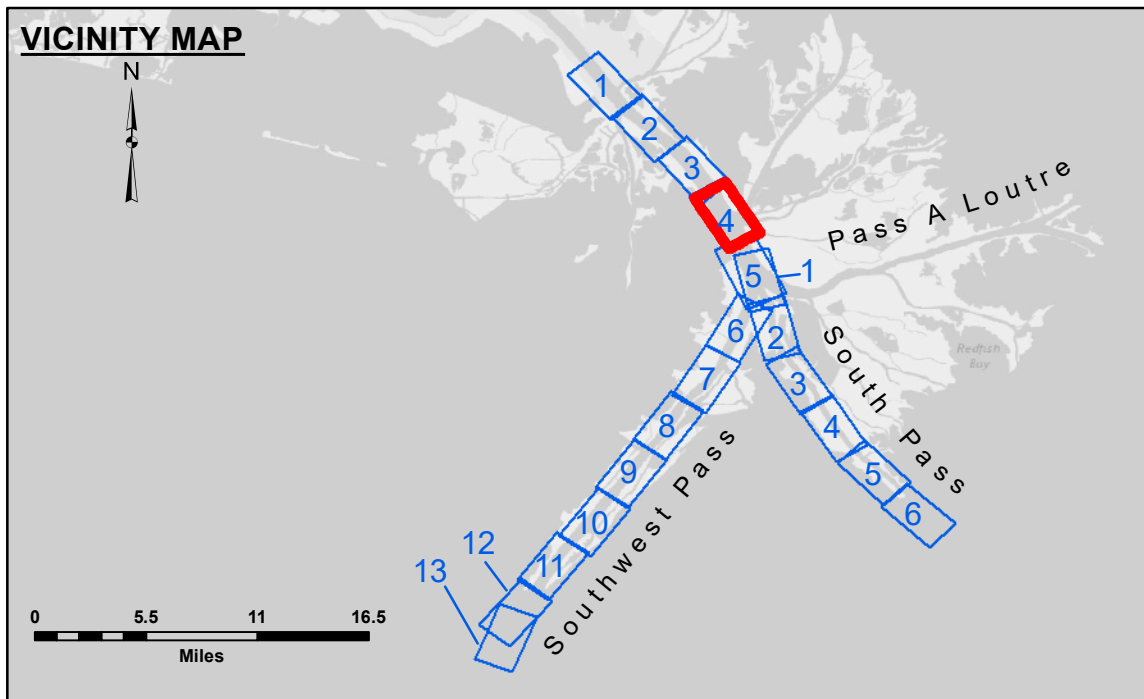


Access/Use: The United States Government furnishes these data and the recipient accepts and uses them with the express understanding that the data are not to be used for any purpose other than that for which they were originally prepared, or implied concerning the accuracy, completeness, reliability, usability or suitability for any particular purpose of the recipient. The user is responsible for the results obtained from the use of these data. The user shall not be held liable under any liability whatsoever to any person by reason of any use of these data. The user shall not be held liable for any damage or loss of any kind, including but not limited to, consequential or incidental damages, arising out of the use of these data. The recipient agrees to indemnify and hold the United States Government harmless from and against all claims, damages, losses and expenses, including reasonable attorneys' fees, that may be asserted against or incurred by the United States Government or its employees, agents, contractors, or subcontractors, in connection with the use of these data. The recipient may not transfer these data to others without also transferring this Disclaimer. The information depicted on this map represents the results of a survey conducted by the United States Army Corps of Engineers and is not to be considered as a representation of the general condition existing at that time.

Submitted:	Surveyed By: JTB & DED
Recommended: Chief, Survey Section	Plotted By: LLB
Approved: Chief, Waterways Maintenance Section	Checked By: MSK

**MISSISSIPPI RIVER - B. R. TO GULF
SOUTHWEST PASS - SHEET 4
SW_04_SWP_20230511_CS_PRO
11 May 2023**



LEGEND

--- Federal Navigation Channel	● Cable Area	□ Borrow Area	■ -10' and above
— Federal Navigation Center Line	■ Placement Area	● Shoalest Sounding**	■ -10' to -20'
— As-built Pipeline/Cable	□ Anchorage Area	★ Beacon, General	■ -20' to -30'
..... Unconfirmed Pipeline/Cable	⊗ Obstruction Point	◆ Red Navigation Buoy	■ -30' to -40'
— Project Depth Contour	★ Wrecks-Submerged	◆ Green Navigation Buoy	■ -40' to -45'
			■ -45' to -50'
			■ -50' to -55'
			■ -55' and below

NOTES:

Horizontal Coordinate System:
North American Datum of 1983 (NAD83), projected to the State Plane Coordinate System (SPCS), Louisiana South Zone. Distance units in U.S. Survey Feet.

Vertical Datum:
Soundings are shown in feet and indicate depths below Mean Lower Low Water (MLLW, 12-16).
Datum Relationships for gage 01525 as of March 2020:
0.0' NAVD86, 2009.55 = -0.53' MLLW = 2.97' MLG

Distances on the Mississippi River, above and below Head of Passes are shown at 1 mile intervals.

The location of navigation aids are base on and provided by the U.S. Coast Guard.

2022 Aerial Photography data source: Optimal GEO (1998 DOQQ in green)

Reference is N.O.A.A. Navigation Chart No. 11361.

** Shoalest Sounding per Quarter per Reach.

*** High frequency (200 kHz) survey data represents the first signal return at a sounding location and will include suspended solids, known as "fluff", if present. Low frequency (24 kHz) survey data normally penetrates through this "fluff" layer to depict elevations of consolidated bottom material. Low frequency accuracies may vary depending on channel conditions and fathometer settings.

Gage Reading: 1.0 MLLW @ PILOT TOWN @ 0945
Sea Conditions: CALM
Vessel Name: BLANCHARD
Survey Type: CONDITION, SB
Sounding Frequency***: LOW

**Sheet Reference Number
4 of 13**

Revision Number:
4.2-20240420