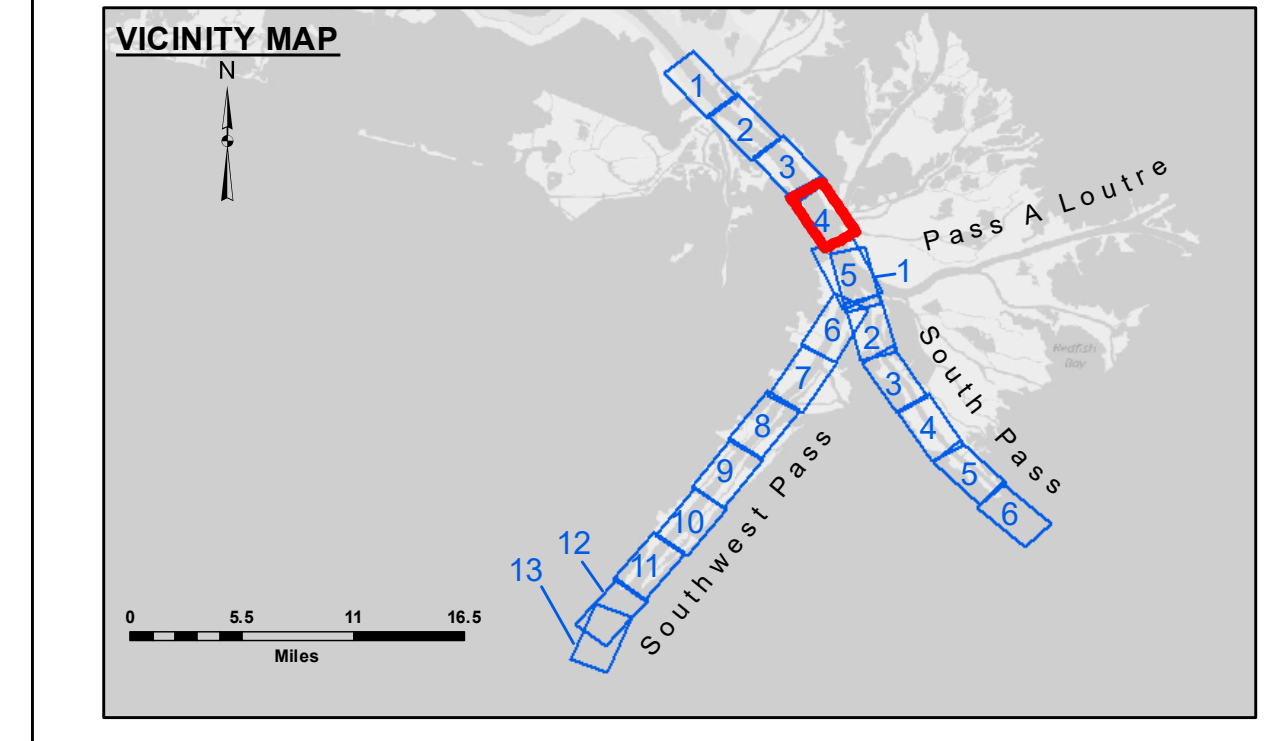


DISCLAIMER: The United States Government furnishes this data and the recipient accepts and uses them with the express understanding that the data is not intended for navigation, engineering, or any other purpose for which it is not specifically intended. The user is responsible for the results of their own use of this data. The Corps of Engineers does not warrant the accuracy, completeness, or reliability of the data for any purpose other than that for which it was specifically intended. The Corps of Engineers does not accept any liability for damages, including consequential damages, arising from the use of this data. The recipient may not transfer or disseminate this data to others without obtaining the necessary permission from the Corps of Engineers. The information depicted on the map represents the results of a survey conducted on or about the date shown and is not intended to represent the general condition existing at that time.

Submitted:	Reviewed:	Checked By:
	RSJ	MSK
U.S. ARMY CORPS OF ENGINEERS NEW ORLEANS DISTRICT		
Checked By: MSK		

**MISSISSIPPI RIVER - B.R. TO GULF
SOUTHWEST PASS - SHEET 4
SW_04_SWP_20240226_CS
26 February 2024**



LEGEND

--- Federal Navigation Channel	••• Cable Area	□ Borrow Area	■ -10' and above
— Federal Navigation Center Line	▭ Placement Area	● Shoalest Sounding**	■ -10' to -20'
— As-built Pipeline/Cable	⊗ Anchorage Area	★ Beacon, General	■ -20' to -30'
..... Unconfirmed Pipeline/Cable	⊗ Obstruction Point	◆ Red Navigation Buoy	■ -30' to -40'
— Project Depth Contour	★ Wrecks-Submerged	◆ Green Navigation Buoy	■ -40' to -45'
			■ -45' to -50'
			■ -50' to -55'
			■ -55' and below

Gage Reading: 0.0 MLLW @ PILOT TOWN @ 1025
Sea Conditions: CALM
Bessel Name: BLANCHARD
Survey Type: CONDITION, SB
Sounding Frequency*:** LOW

Vertical Datum:
 Soundings are shown in feet and indicate depths below Mean Lower Low Water (MLLW, 12-16).
 Datum Relationships for gage 01525 as of March 2020:
 0.0' NAVD86, 2009.55 = -0.53' MLLW = 2.97' MLG

Distances on the Mississippi River, above and below Head of Passes are shown at 1 mile intervals.

The location of navigation aids are base on and provided by the U.S. Coast Guard.

2022 Aerial Photography data source: Optimal GEO (1998 DOQQ in green)

Reference is N.O.A. Navigation Chart No. 11361.

** Shoalest Sounding per Quarter per Reach.

*** High frequency (200 kHz) survey data represents the first signal return at a sounding location and will include suspended solids, known as "fluff", if present. Low frequency (24 kHz) survey data normally penetrates through this "fluff" layer to depict elevations of consolidated bottom material. Low frequency accuracies may vary depending on channel conditions and fathometer settings.

Sheet Reference Number
4 of 13

Revision Number:
4.2-20240429