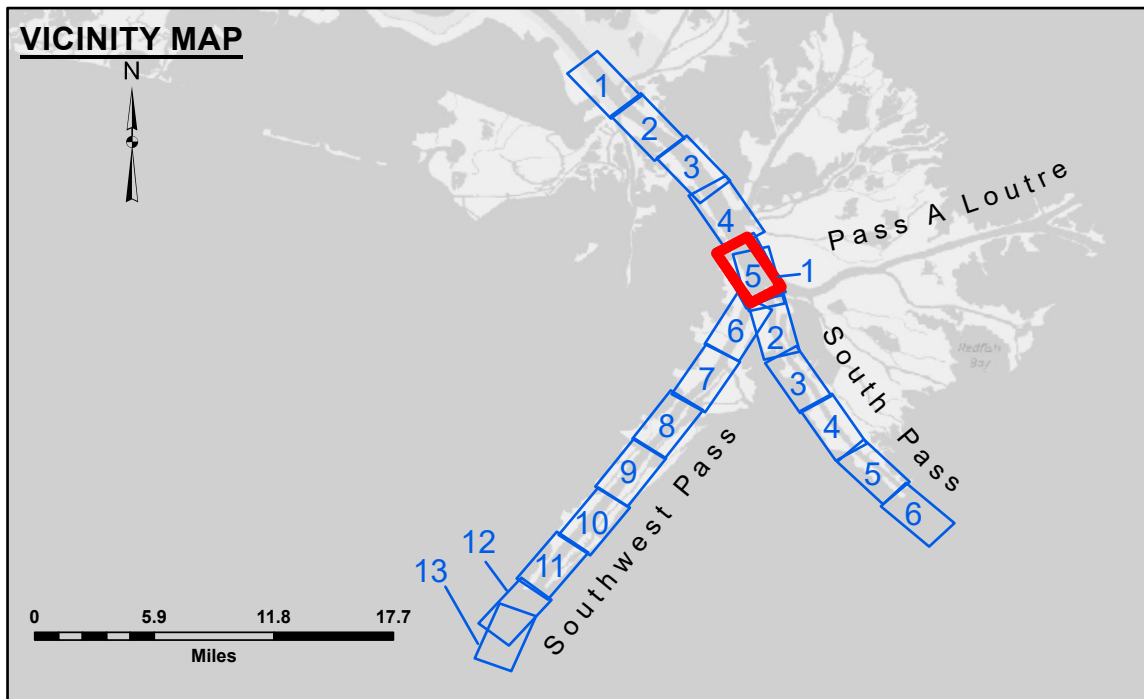
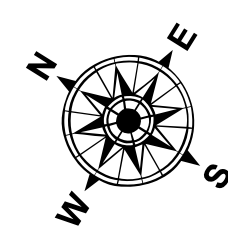


DREDGE GLENN EDWARDS
DREDGING FULL CHANNEL WIDTH
STA. 2905+00 TO STA. 110+00 SHEETS 3,4, & 5

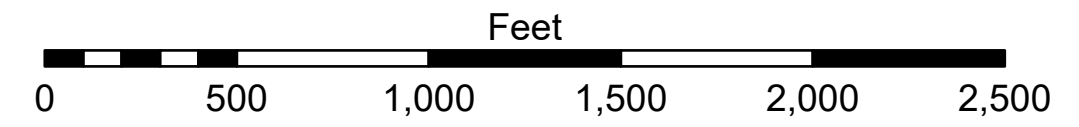
PILOT TOWN ANCHORAGE
An area approximately 5.2 miles in length along the right descending bank or west side of the river. The east limit of the anchorage area at the upstream end starts at a point approximately 1,600 feet from the east bank at Mile 6.7 above Head of Passes and extends downstream generally parallel to and 1,600 feet from the east bank line to a point directly opposite Old Quarantine Station Light at Mile 3.7 above Head of Passes, thence to a point 1,600 feet directly opposite Cuptis Gap Light at Mile 2.8 above Head of Passes, thence to a point 1,600 feet directly opposite Pilot town Wingdam Light at Mile 1.5 above Head of Passes, which is the downstream limit of the anchorage area.



LEGEND	
--- Federal Navigation Channel	● Cable Area
— Federal Navigation Center Line	□ Placement Area
— As-built Pipeline/Cable	□ Anchorage Area
..... Unconfirmed Pipeline/Cable	⊗ Obstruction Point
— Project Depth Contour	⚓ Wrecks-Submerged
3 Fluff Thickness (feet)*	★ Beacon, General
□ Borrow Area	◆ Red Navigation Buoy
● Shoalest Sounding**	◆ Green Navigation Buoy
■ -10' and above	
■ -10' to -20'	
■ -20' to -30'	
■ -30' to -40'	
■ -40' to -45'	
■ -45' to -50'	
■ -50' to -55'	
■ -55' and below	



Gage Reading: 0.6 MLLW @ P.T. (01525) @ 1025
 Sea Conditions: CALM
 Vessel Name: TOBIN
 Survey Type: CONDITION, SB
 Sounding Frequency***: LOW



NOTES:
 Horizontal Coordinate System: North American Datum of 1983 (NAD83), projected to the State Plane Coordinate System (SPCS), Louisiana South Zone. Distance units in U.S. Survey Feet.
 Vertical Datum: 0.6 MLLW @ P.T. (01525) @ 1025
 Soundings are shown in feet and indicate depths below Mean Lower Low Water (MLLW, 12-16). Datum Relationships for gage 01525 as of March 2020: 0.0' NAVD88, 2009.55 = -0.53' MLLW = 2.97' MLG
 Distances on the Mississippi River, above and below Head of Passes are shown at 1 mile intervals.
 The location of navigation aids are base on and provided by the U.S. Coast Guard.
 2024 Aerial Photography data source: Optimal GEO (1998 DOQQ in green)
 Reference is N.O.A.A. Navigation Chart No. 11361.
 ** Shoalest Sounding per Quarter Per Reach.
 *** High frequency (200 kHz) survey data represents the first signal return at a sounding location and will include suspended solids, known as "fluff", if present. Low frequency (24 kHz) survey data normally penetrates through this "fluff" layer to depict elevations of consolidated bottom material. Low frequency accuracies may vary depending on channel conditions and fathometer settings.



DISCLAIMER: The United States Government furnishes these data and the recipient accepts and uses them with the express understanding that the data are not to be used for any purpose other than that for which they were prepared, and that the user is responsible for the results obtained from their use. The United States Government makes no warranty, expressed or implied, concerning the accuracy, completeness, or reliability of the data furnished. The United States Government is not liable for any damage or loss, including consequential damage, resulting from the use of the data. The recipient agrees not to represent these data to anyone as other than Government provided data. The recipient may not transfer these data to others without obtaining the Government's approval. The information depicted on this map represents the results of a survey conducted on or about the date shown on the map. It is not intended to represent the general condition existing at that time.

U.S. ARMY CORPS OF ENGINEERS	
Submitted:	Surveyed By: LLB & DED
Recommended:	Plotted By: RSL
Approved:	Checked By: MSK

**MISSISSIPPI RIVER - B. R. TO GULF
 SOUTHWEST PASS - SHEET 5
 SW_05_SWPX_20240726_CS**

**Sheet
 Reference
 Number
 5 of 13**

Revision Number: 5.23.12.3-23.12.3

3,949,000

3,946,000

3,943,000

3,940,000

3,937,000

3,934,000

3,931,000

3,928,000

251,000

3,946,000

248,000

3,949,000

245,000

3,949,000

242,000

3,946,000

251,000

3,937,000

245,000

3,940,000

242,000

3,943,000

239,000

3,943,000

239,000

3,943,000

239,000

3,943,000

239,000

3,943,000

239,000