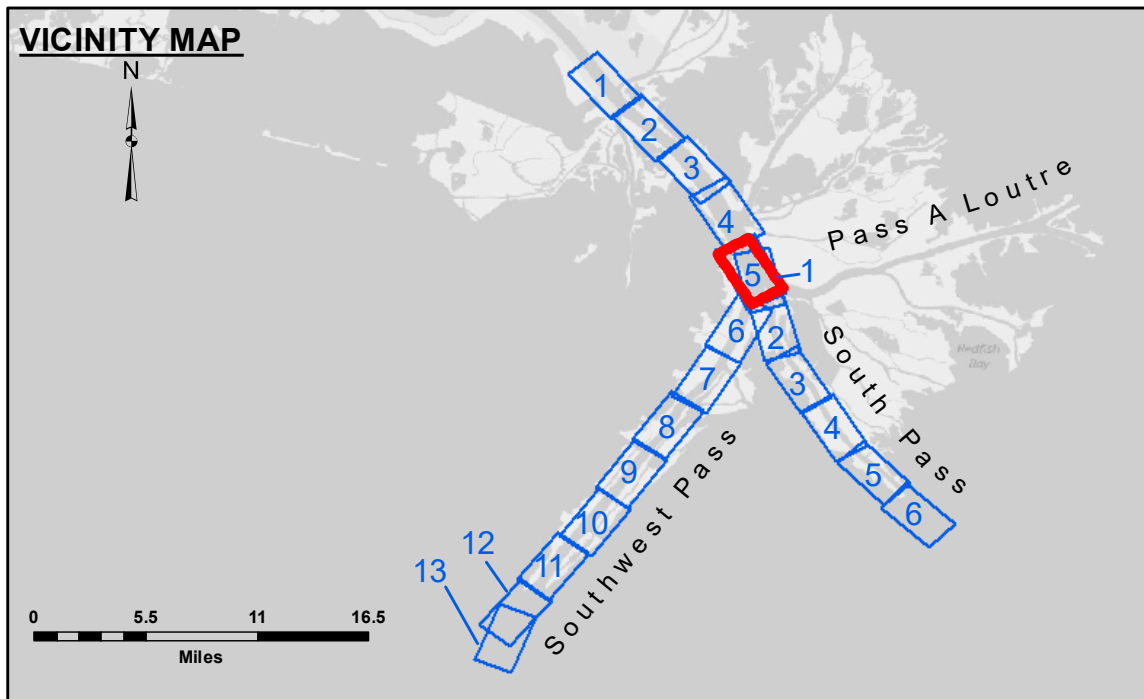
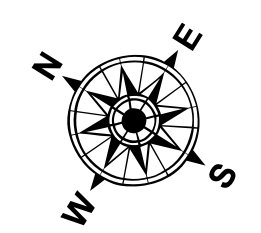


**DREDGE BAYPORT**  
**DREDGING 200' EAST OF C/L AND 50' WEST OF C/L**  
**BETWEEN RG. 35 TO RG. 30-A**

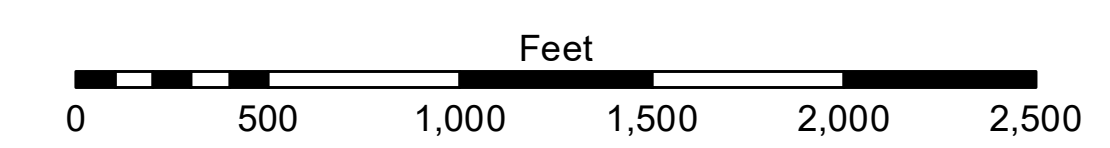


**LEGEND**

--- Federal Navigation Channel	○ Cable Area	□ Borrow Area	■ -10' and above
— Federal Navigation Center Line	□ Placement Area	● Shoalest Sounding**	■ -10' to -20'
— As-built Pipeline/Cable	□ Anchorage Area	★ Beacon, General	■ -20' to -30'
..... Unconfirmed Pipeline/Cable	⊗ Obstruction Point	◆ Red Navigation Buoy	■ -30' to -40'
— Project Depth Contour	⚓ Wrecks-Submerged	◆ Green Navigation Buoy	■ -40' to -45'
			■ -45' to -48.5'
			■ -48.5' to -55'
			■ -55' and below



Gage Reading: 1.8 MLLW @ PILOT TOWN @ 1100  
 Sea Conditions: CHOPPY, FLUFF  
 Vessel Name: JOHN BOPP  
 Survey Type: CONDITION, SB  
 Sounding Frequency\*\*\*: LOW



**NOTES:**  
 Horizontal Coordinate System: North American Datum of 1983 (NAD83), projected to the State Plane Coordinate System (SPCS), Louisiana South Zone. Distance units in U.S. Survey Feet.  
 Vertical Datum: Soundings are shown in feet and indicate depths below Mean Lower Low Water (MLLW, 07-11). Datum Relationships for gage 01525 as of July 2015: 0.0' NAVD83 = -0.3' MLLW = 3.20' MLG  
 Distances on the Mississippi River, above and below Head of Passes are shown at 1 mile intervals.  
 The location of navigation aids are base on and provided by the U.S. Coast Guard.  
 2016 Aerial Photography data source: Precision Aerial Reconnaissance, LLC (1998 DOQQ in green)  
 Reference is N.O.A. Navigation Chart No. 11361.  
 \*\* Shoalest Sounding per Quarter per Reach.  
 \*\*\* High frequency (200 kHz) survey data represents the first signal return at a sounding location and will include suspended solids, known as "fluff", if present. Low frequency (24 kHz) survey data normally penetrates through this "fluff" layer to depict elevations of consolidated bottom material. Low frequency accuracies may vary depending on channel conditions and fathometer settings.



**DISCLAIMER:** The United States Government furnishes these data and the recipient accepts and uses them with the express understanding that the United States Government makes no warranty, expressed or implied concerning the accuracy, completeness, reliability, usability or suitability for any particular purpose of the information. The user is responsible for the results obtained from the use of this information. Application of the data for other than the intended purpose is at the user's risk. The user shall indemnify and hold the United States Government harmless from any and all claims, damages, costs and expenses, including reasonable attorneys' fees, that may be incurred by the United States Government as a result of the use of this information for purposes other than those intended. The information depicted on this map represents the results of a survey conducted on or about the date of the survey. The information is not intended to represent the general condition existing at that time.

U.S. ARMY CORPS OF ENGINEERS  
 NEW ORLEANS DISTRICT

Submitted:	Surveyed By: JH & TDG	Plotted By: RSL	Checked By: MSK
Recommended:	Chief, Survey Section		
Approved:	Chief, Waterways Maintenance Section		

**MISSISSIPPI RIVER - B.R. TO GULF**  
**SOUTHWEST PASS - SHEET 5**  
**SW\_05\_SWP\_20180416\_CS**  
 16 April 2018

**Sheet Reference Number**  
**5 of 13**

Revision Number: 3.13-20160811