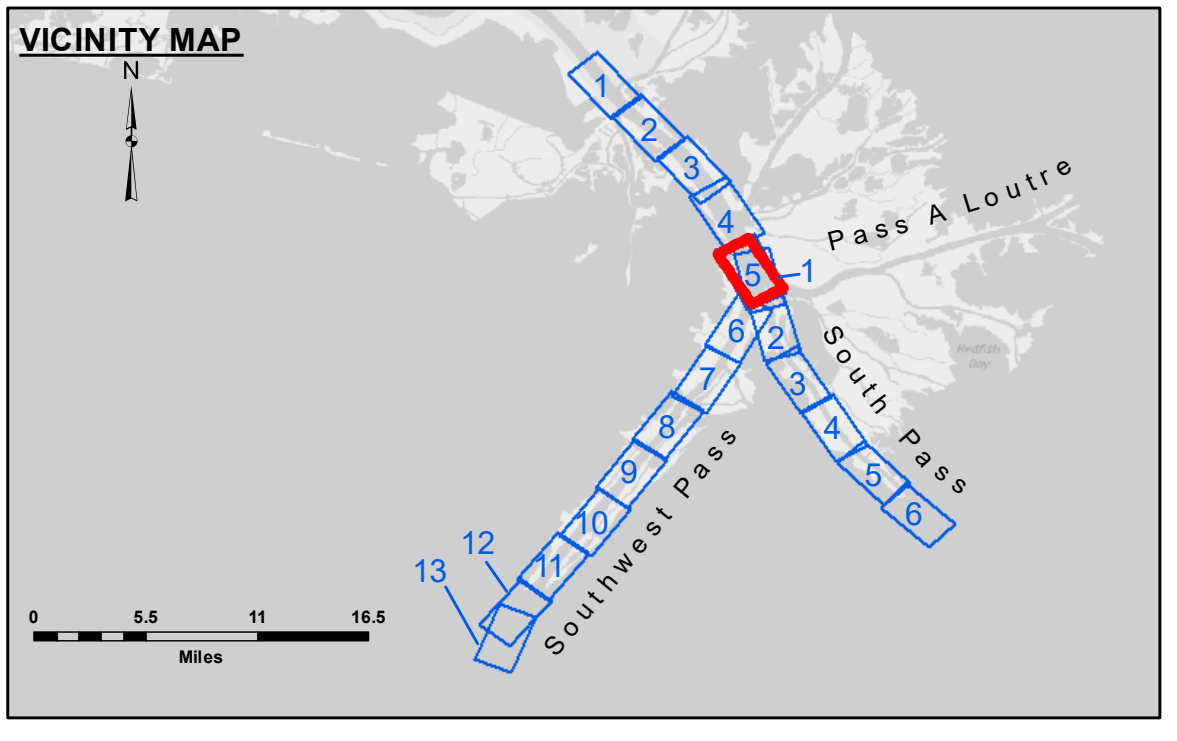


DISCLAIMER: The United States Government furnishes these data and the recipient accepts and uses them with the express understanding that the data are for informational purposes only and are not to be used for any purpose other than that for which they were originally prepared. The user is responsible for the results of any use of the data. The Corps of Engineers does not warrant the accuracy, completeness, or reliability of the data for any purpose other than that for which they were originally prepared. The Corps of Engineers does not accept any responsibility for changes in the hydrographical conditions which develop after the date of the survey. The information depicted on this map represents the results of a survey conducted on the ground condition existing at that time.

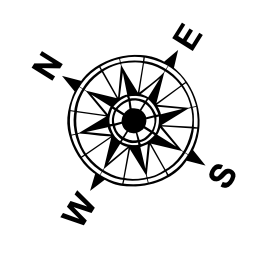
Submitted:	Surveyed By:	Plotted By:	Checked By:
	JH & TDG	RSL	MSK
Recommended:	Chief, Survey Section		
Approved:	Chief, Waterways Maintenance Section		

**MISSISSIPPI RIVER - B.R. TO GULF
SOUTHWEST PASS - SHEET 5
SW_05_SWP_20180417_CS
17 April 2018**

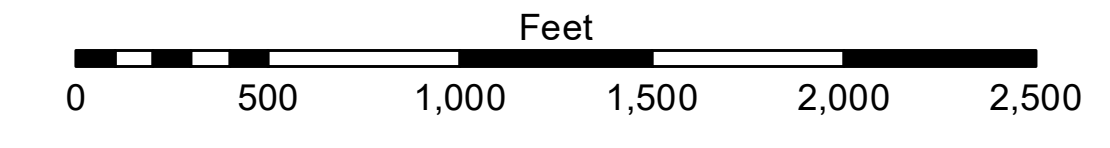
**Sheet Reference Number
5 of 13**



LEGEND	
--- Federal Navigation Channel	● Cable Area
— Federal Navigation Center Line	□ Placement Area
— As-built Pipeline/Cable	□ Anchorage Area
..... Unconfirmed Pipeline/Cable	⊗ Obstruction Point
— Project Depth Contour	⚓ Wrecks-Submerged
□ Borrow Area	★ Beacon, General
● Shoalest Sounding**	◆ Red Navigation Buoy
★ Beacon, General	◆ Green Navigation Buoy
■ -10' and above	
■ -10' to -20'	
■ -20' to -30'	
■ -30' to -40'	
■ -40' to -45'	
■ -45' to -48.5'	
■ -48.5' to -55'	
■ -55' and below	



Gage Reading: 1.8 MLLW @ PILOT TOWN @ 1130
 Sea Conditions: CALM, FLUFF
 Vessel Name: JOHN BOPP
 Survey Type: CONDITION, SB
 Sounding Frequency***: LOW



NOTES:
 Horizontal Coordinate System: North American Datum of 1983 (NAD83), projected to the State Plane Coordinate System (SPCS), Louisiana South Zone. Distance units in U.S. Survey Feet.
 Vertical Datum: 2016 Aerial Photography data source: Precision Aerial Reconnaissance, LLC (1998 DOQQ in green).
 Soundings are shown in feet and indicate depths below Mean Lower Low Water (MLLW, 07-11). Datum Relationships for gage 01525 as of July 2015: 0.0' NAVD83 = -0.3' MLLW = 3.20' MLG
 Distances on the Mississippi River, above and below Head of Passes are shown at 1 mile intervals.
 The location of navigation aids are base on and provided by the U.S. Coast Guard.
 Reference is N.O.A.A. Navigation Chart No. 11361.
 ** Shoalest Sounding per Quarter Per Reach.
 *** High frequency (200 kHz) survey data represents the first signal return at a sounding location and will include suspended solids, known as "fluff", if present. Low frequency (24 kHz) survey data normally penetrates through this "fluff" layer to depict elevations of consolidated bottom material. Low frequency accuracies may vary depending on channel conditions and fathometer settings.