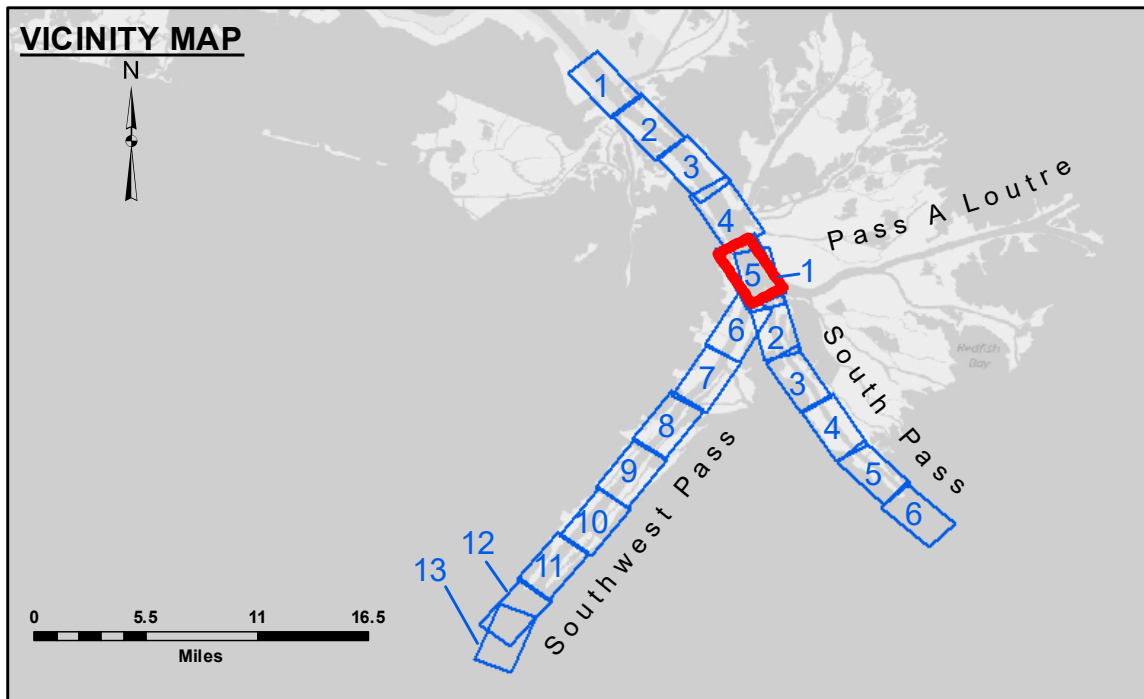


DISCLAIMER
 The United States Government furnishes this data and the recipient accepts and uses them with the express understanding that the data is not to be used for any purpose other than that for which it was provided. The user is responsible for the results of any use of the data. The United States Government does not warrant the accuracy, reliability, usability, or availability of the data for any purpose other than that for which it was provided. The user is responsible for the results of any use of the data. The United States Government does not warrant the accuracy, reliability, usability, or availability of the data for any purpose other than that for which it was provided. The user is responsible for the results of any use of the data.

ACCESS
 The United States Government furnishes this data and the recipient accepts and uses them with the express understanding that the data is not to be used for any purpose other than that for which it was provided. The user is responsible for the results of any use of the data. The United States Government does not warrant the accuracy, reliability, usability, or availability of the data for any purpose other than that for which it was provided. The user is responsible for the results of any use of the data.

Submitted:	Checked By:
Recommended:	Checked By:
Approved:	Checked By:

MISSISSIPPI RIVER - B.R. TO GULF
SOUTHWEST PASS - SHEET 5
SW_05_SWP_20180509_CS
09 May 2018

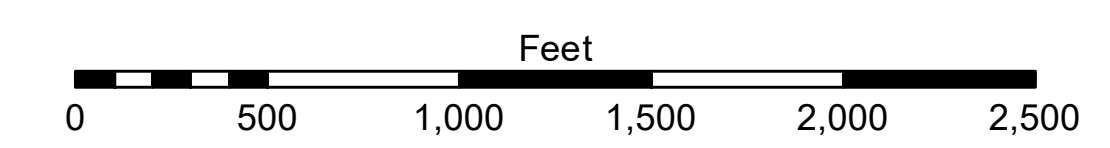


LEGEND

--- Federal Navigation Channel	● Cable Area	□ Borrow Area	■ -10' and above
— Federal Navigation Center Line	□ Placement Area	● Shoalest Sounding**	■ -10' to -20'
— As-built Pipeline/Cable	□ Anchorage Area	★ Beacon, General	■ -20' to -30'
..... Unconfirmed Pipeline/Cable	⊗ Obstruction Point	◆ Red Navigation Buoy	■ -30' to -40'
— Project Depth Contour	⚓ Wrecks-Submerged	◆ Green Navigation Buoy	■ -40' to -45'
			■ -45' to -48.5'
			■ -48.5' to -55'
			■ -55' and below



Gage Reading: 1.7 MLLW @ PILOT TOWN @ 1220
 Sea Conditions: CALM
 Vessel Name: BLANCHARD
 Survey Type: CONDITION, SB
 Sounding Frequency***: LOW



NOTES:
 Horizontal Coordinate System: North American Datum of 1983 (NAD83), projected to the State Plane Coordinate System (SPCS), Louisiana South Zone. Distance units in U.S. Survey Feet.
 Vertical Datum: Soundings are shown in feet and indicate depths below Mean Lower Low Water (MLLW, 07-11). Datum Relationships for gage 01525 as of July 2015: 0.0' NAVD88 = -0.3' MLLW = 3.20' MLG
 Distances on the Mississippi River, above and below Head of Passes are shown at 1 mile intervals.
 The location of navigation aids are base on and provided by the U.S. Coast Guard.
 2016 Aerial Photography data source: Precision Aerial Reconnaissance, LLC (1998 DOQQ in green)
 Reference is N.O.A. Navigation Chart No. 11361.
 ** Shoalest Sounding per Quarter per Reach.
 *** High frequency (200 kHz) survey data represents the first signal return at a sounding location and will include suspended solids, known as "fluff", if present. Low frequency (24 kHz) survey data normally penetrates through this "fluff" layer to depict elevations of consolidated bottom material. Low frequency accuracies may vary depending on channel conditions and fathometer settings.

Sheet Reference Number
5 of 13

Revision Number: 3.13-20160811