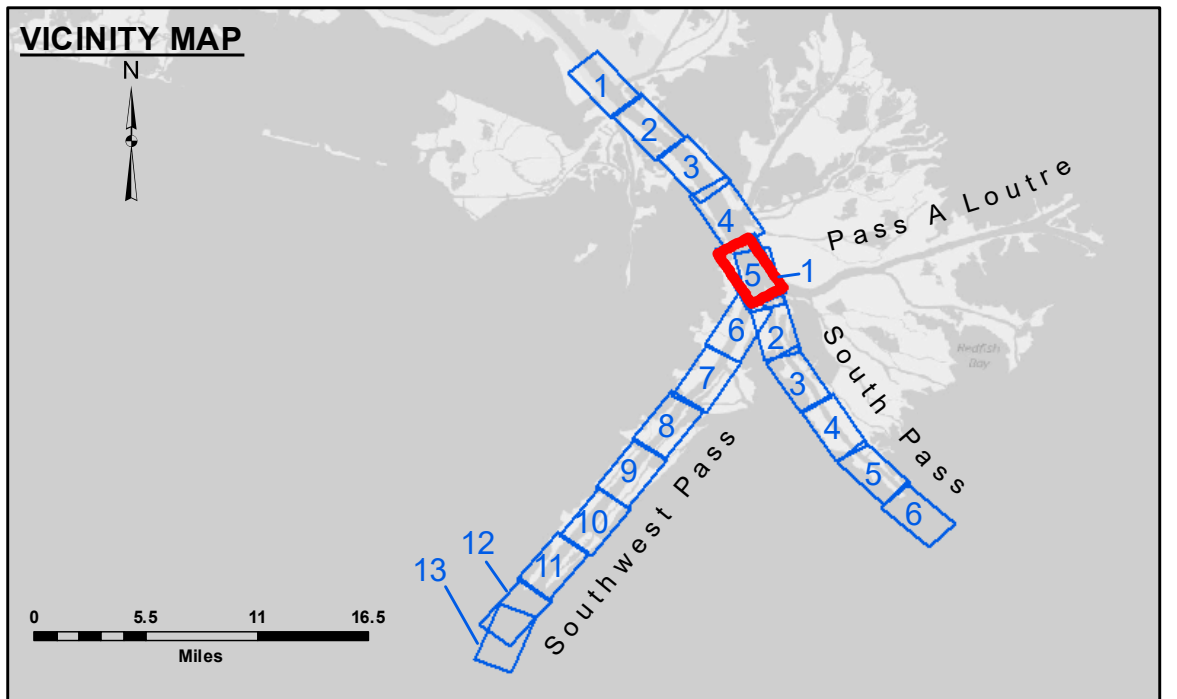


DREDGE WHEELER
DREDGING RANGE 15 TO RANGE 4
EAST HALF OF THE CHANNEL

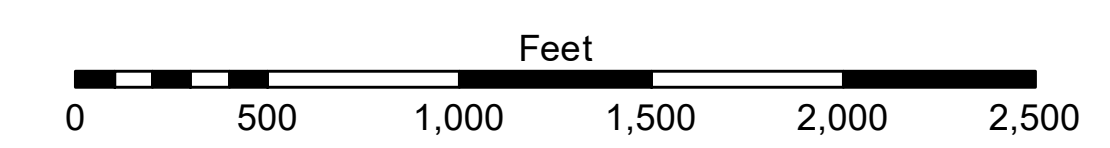


LEGEND

--- Federal Navigation Channel	○ Cable Area	□ Borrow Area	■ -10' and above
— Federal Navigation Center Line	□ Placement Area	● Shoalest Sounding**	■ -10' to -20'
— As-built Pipeline/Cable	□ Anchorage Area	★ Beacon, General	■ -20' to -30'
..... Unconfirmed Pipeline/Cable	⊗ Obstruction Point	◆ Red Navigation Buoy	■ -30' to -40'
— Project Depth Contour	⚓ Wrecks-Submerged	◆ Green Navigation Buoy	■ -40' to -45'
			■ -45' to -48.5'
			■ -48.5' to -55'
			■ -55' and below



Gage Reading: 1.3 MLLW @ PILOT TOWN @ 1000
 Sea Conditions: CALM, FLUFF
 Vessel Name: JOHN BOFF
 Survey Type: CONDITION, SB
 Sounding Frequency***: LOW



NOTES:
 Horizontal Coordinate System: North American Datum of 1983 (NAD83), projected to the State Plane Coordinate System (SPCS), Louisiana South Zone. Distance units in U.S. Survey Feet.
 Vertical Datum: Soundings are shown in feet and indicate depths below Mean Lower Low Water (MLLW, 07-11). Datum Relationships for gage 01525 as of July 2015: 0.0' NAVD88 = -0.3' MLLW = 3.20' MLG
 Distances on the Mississippi River, above and below Head of Passes are shown at 1 mile intervals.
 The location of navigation aids are base on and provided by the U.S. Coast Guard.
 2016 Aerial Photography data source: Precision Aerial Reconnaissance, LLC (1998 DOQQ in green)
 Reference is N.O.A. Navigation Chart No. 11361.
 ** Shoalest Sounding per Quarter per Reach.
 *** High frequency (200 kHz) survey data represents the first signal return at a sounding location and will include suspended solids, known as "fluff", if present. Low frequency (24 kHz) survey data normally penetrates through this "fluff" layer to depict elevations of consolidated bottom material. Low frequency accuracies may vary depending on channel conditions and fathometer settings.



DISCLAIMER
 Access Constraints: The United States Government furnishes these data and the recipient accepts and uses them with the express understanding that the data are not to be distributed, reproduced, or implied concerning the accuracy, completeness, reliability, usability, or suitability for any particular purpose of the user. The user is responsible for the results obtained from the use of the data. The user is responsible for the results obtained from the use of the data. The user is responsible for the results obtained from the use of the data.
 Distribution Liability: The data represents the results of data collection processing for a specific US Army Corps of Engineers project. The data is only valid for its intended use, content, time and accuracy. The user is responsible for the results obtained from the use of the data. The user is responsible for the results obtained from the use of the data.
 Data Constraints: Hydrographic survey data is subject to change rapidly due to several factors including but not limited to dredging operations, channel shifts, and other factors. The user is responsible for the results obtained from the use of the data. The user is responsible for the results obtained from the use of the data.
 The information depicted on this map represents the results of a survey conducted on the date indicated. The user is responsible for the results obtained from the use of the data. The user is responsible for the results obtained from the use of the data.

U.S. ARMY CORPS OF ENGINEERS
NEW ORLEANS DISTRICT

Submitted:	Surveyed By: JTB & TDG
Recommended: Chief Survey Section	Plotted By: TSS
Approved: Chief Waterways Maintenance Section	Checked By: MSK

MISSISSIPPI RIVER - B.R. TO GULF
 SOUTHWEST PASS - SHEET 5
 SW_05_SWP_20180919_CS
 19 September 2018

Sheet Reference Number
 5 of 13

Revision Number:
 3.13-20160811