

DISTRIBUTION LIABILITY: The data represents the results of data collection processing for a specific US Army Corps of Engineers project and is only valid for its intended use, content, time and accuracy specifications. The user is responsible for the results of their use. The Corps of Engineers does not warrant the accuracy of the data for other than its intended purpose.

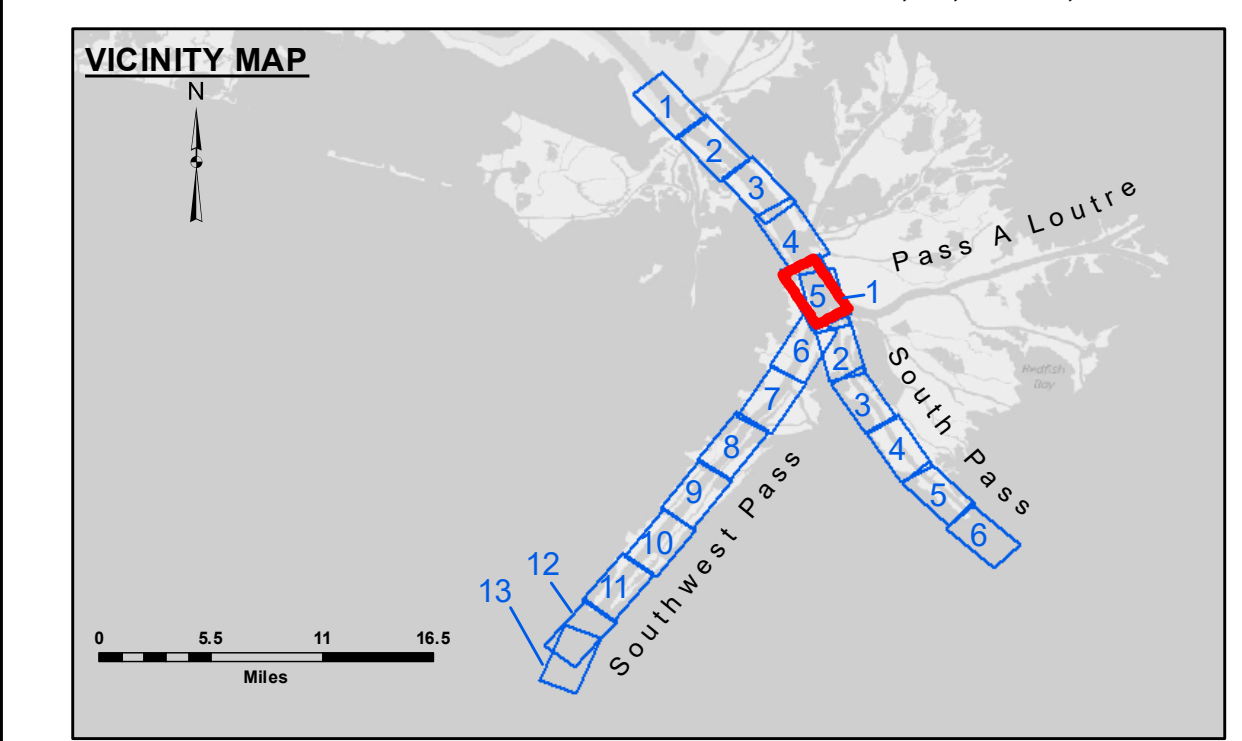
DATE CONSTRAINTS: Hydrographic survey data is subject to change rapidly due to several factors including but not limited to dredging activities, changes in channel conditions, and changes in the hydrographical conditions which develop after the date of the survey. The Corps of Engineers does not accept responsibility for changes in the hydrographical conditions which develop after the date of the survey. Prudent mariners should not rely solely upon it.

ACCESS CONSTRAINTS: The United States Government furnishes these data and the recipient accepts and uses them with the express understanding that the data are not to be distributed, reproduced, or implied concerning the accuracy, completeness, reliability, usability, or suitability for any particular purpose of the recipient without the express written approval of the Corps of Engineers. The recipient may not transfer these data to others without also obtaining the permission of the Corps of Engineers. These data are being made available to the public under no liability whatsoever to any person by reason of any use of these data. These data are being made available to the public under no liability whatsoever to any person by reason of any use of these data.

| | |
|--------------|-------------|
| Submitted: | Checked: |
| Recommended: | Checked: |
| Approved: | Checked: |
| Surveyed By: | Plotted By: |
| MGF & JH | RSL |
| Submitted: | Checked: |
| Checked: | Checked: |
| Checked: | Checked: |

MISSISSIPPI RIVER - B.R. TO GULF
SOUTHWEST PASS - SHEET 5
SW_05_SWP_20190305_CS
05 March 2019

Sheet Reference Number
5 of 13



LEGEND

- Federal Navigation Channel
- Federal Navigation Center Line
- As-built Pipeline/Cable
- Unconfirmed Pipeline/Cable
- Project Depth Contour
- Cable Area
- Placement Area
- Anchorage Area
- ⊗ Obstruction Point
- ⚓ Wrecks-Submerged
- ▭ Borrow Area
- Shoalest Sounding**
- ☆ Beacon, General
- ◆ Red Navigation Buoy
- ◆ Green Navigation Buoy
- -10' and above
- -10' to -20'
- -20' to -30'
- -30' to -40'
- -40' to -45'
- -45' to -48.5'
- -48.5' to -55'
- -55' and below

NOTES:

Horizontal Coordinate System: North American Datum of 1983 (NAD83), projected to the State Plane Coordinate System (SPCS), Louisiana South Zone. Distance units in U.S. Survey Feet.

Vertical Datum: Soundings are shown in feet and indicate depths below Mean Lower Low Water (MLLW, 07-11). Datum Relationships for gage 01525 as of July 2015: 0.0' NAVD83 = -0.3' MLLW = 3.20' MLG

Distances on the Mississippi River, above and below Head of Passes are shown at 1 mile intervals.

The location of navigation aids are based on and provided by the U.S. Coast Guard.

2016 Aerial Photography data source: Precision Aerial Reconnaissance, LLC (1998 DOQQ in green)

Reference is N.O.A. Navigation Chart No. 11361.

** Shoalest Sounding per Quarter per Reach.

*** High frequency (200 kHz) survey data represents the first signal return at a sounding location and will include suspended solids, known as "fluff", if present. Low frequency (24 kHz) survey data normally penetrates through this "fluff" layer to depict elevations of consolidated bottom material. Low frequency accuracies may vary depending on channel conditions and fathometer settings.

Gage Reading: 2.00 MLLW @ PILOT TOWN @ 1415

Sea Conditions: CALM

Vessel Name: BEAUVAIS

Survey Type: CONDITION, SB

Sounding Frequency***: LOW

Feet