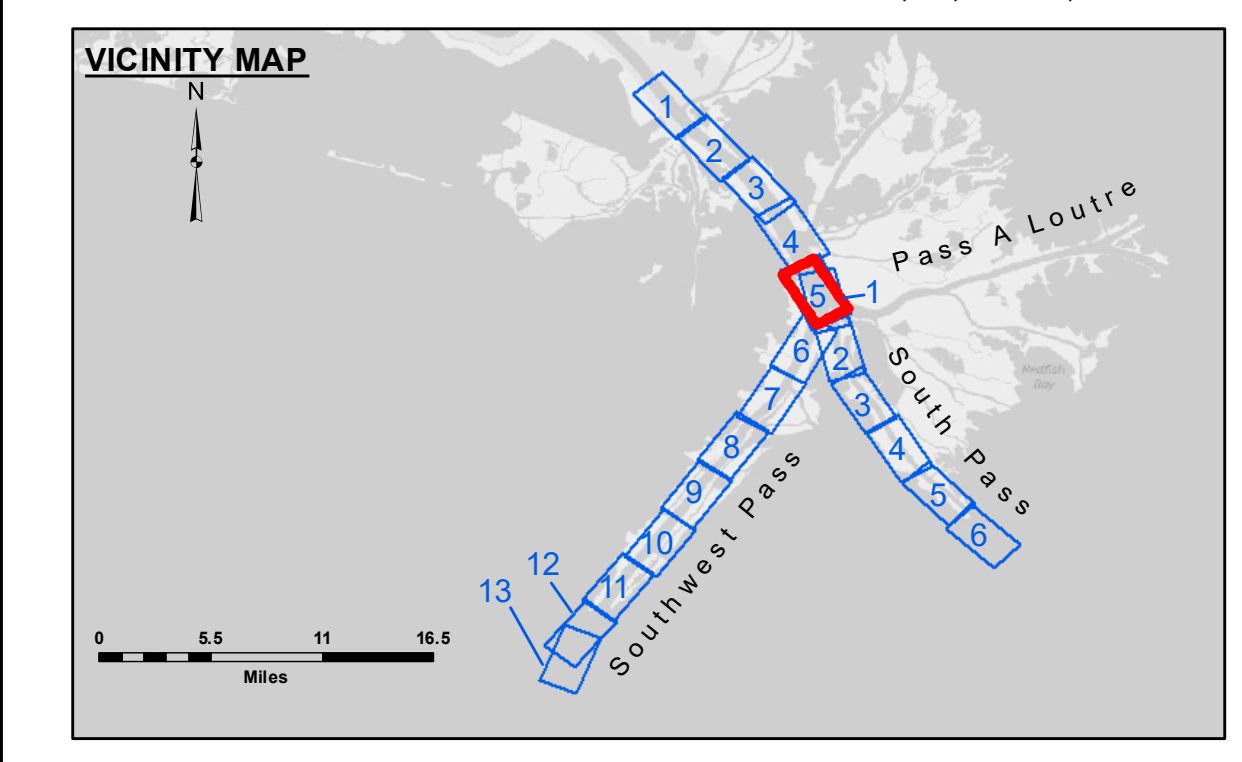


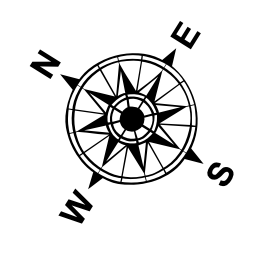
**DREDGE WHEELER  
DREDGING FULL CHANNEL WIDTH  
RG. 51 TO RG. 30-A SHEETS 4 AND 5**

**DREDGE STUYVESANT  
DREDGING FULL CHANNEL WIDTH  
RG. 30-A TO RG. 58-B SHEETS 5 AND 6**

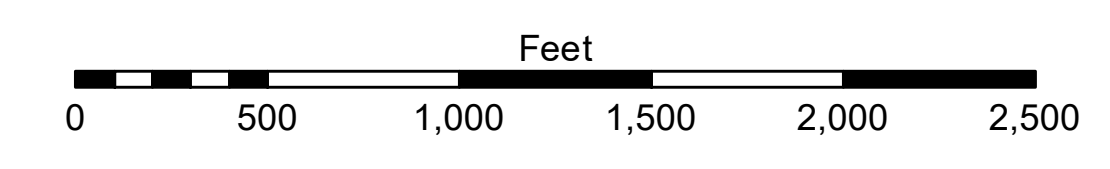


**LEGEND**

Federal Navigation Channel	Cable Area	Borrow Area	-10' and above
Federal Navigation Center Line	Placement Area	Shoalest Sounding**	-10' to -20'
As-built Pipeline/Cable	Anchorage Area	Beacon, General	-20' to -30'
Unconfirmed Pipeline/Cable	Obstruction Point	Red Navigation Buoy	-30' to -40'
Project Depth Contour	Wrecks-Submerged	Green Navigation Buoy	-40' to -45'
			-45' to -48.5'
			-48.5' to -55'
			-55' and below



Gage Reading: 2.8 MLLW @ PILOT TOWN @ 0915  
 Sea Conditions: choppy  
 Vessel Name: BEAUVAIS  
 Survey Type: CONDITION, SB  
 Sounding Frequency\*\*\*: LOW



**NOTES:**  
 Horizontal Coordinate System: North American Datum of 1983 (NAD83), projected to the State Plane Coordinate System (SPCS), Louisiana South Zone. Distance units in U.S. Survey Feet.  
 Vertical Datum: Soundings are shown in feet and indicate depths below Mean Lower Low Water (MLLW, 07-11). Datum Relationships for gage 01525 as of July 2015: 0.0' NAVD88 = -0.3' MLLW = 3.20' MLG  
 Distances on the Mississippi River, above and below Head of Passes are shown at 1 mile intervals.  
 The location of navigation aids are base on and provided by the U.S. Coast Guard.  
 2016 Aerial Photography data source: Precision Aerial Reconnaissance, LLC (1998 DOQQ in green)  
 Reference is N.O.A. Navigation Chart No. 11361.  
 \*\* Shoalest Sounding per Quarter per Reach.  
 \*\*\* High frequency (200 kHz) survey data represents the first signal return at a sounding location and will include suspended solids, known as "fluff", if present. Low frequency (24 kHz) survey data normally penetrates through this "fluff" layer to depict elevations of consolidated bottom material. Low frequency accuracies may vary depending on channel conditions and fathometer settings.



**DISCLAIMER:** The United States Government furnishes these data and the recipient accepts and uses them with the express understanding that the data are not to be used for any purpose other than that for which they were prepared, and that the data are not to be used for any purpose other than that for which they were prepared, and that the data are not to be used for any purpose other than that for which they were prepared. The user is responsible for the results obtained from the use of these data. The user is responsible for the results obtained from the use of these data. The user is responsible for the results obtained from the use of these data.

Submitted:	Chart Survey Section
Recommended:	Chart Survey Section
Approved:	Chart Waterways Maintenance Section
Surveyed By:	JTB & MGF
Plotted By:	RSL
Checked By:	MSK

**MISSISSIPPI RIVER - B.R. TO GULF  
SOUTHWEST PASS - SHEET 5  
SW\_05\_SWP\_20190603\_CS  
03 June 2019**

**Sheet Reference Number  
5 of 13**