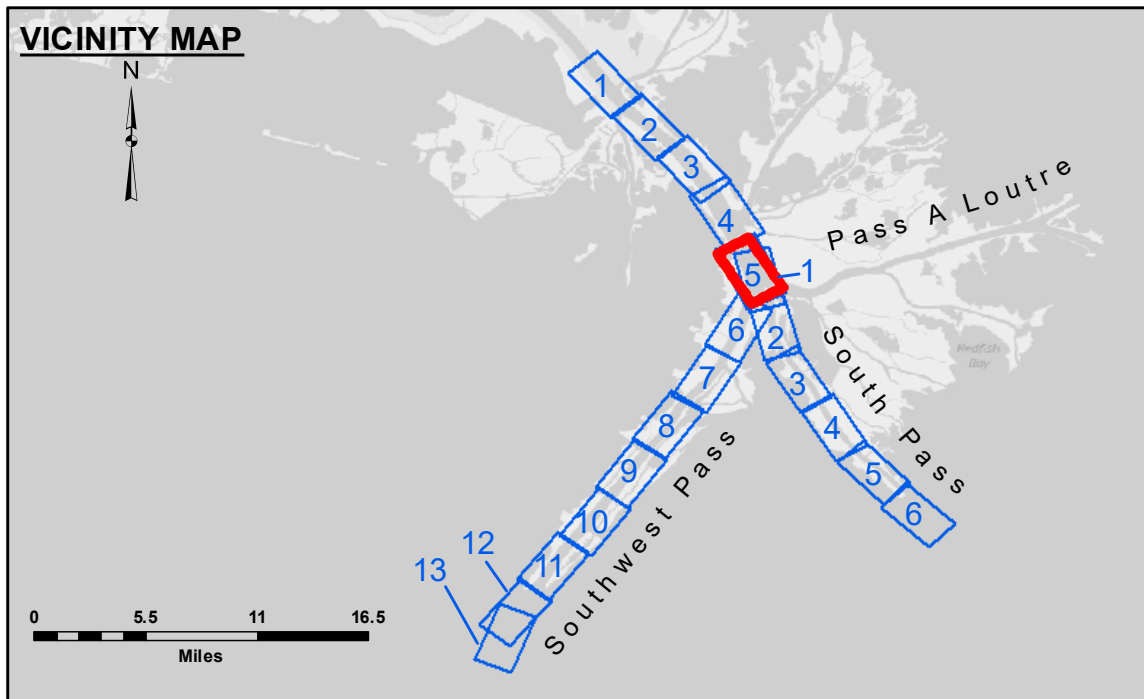


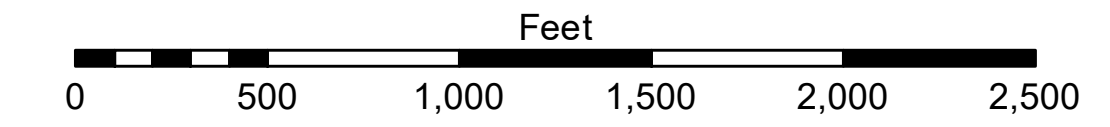
DREDGE WHEELER
DREDGING RANGE 18 TO RANGE 7-A
FULL CHANNEL WIDTH SHEETS 5 & 6



LEGEND			
	Federal Navigation Channel		Placement Area
	Federal Navigation Center Line		Borrow Area
	As-built Pipeline/Cable		Shoalest Sounding**
	Unconfirmed Pipeline/Cable		Beacon, General
	Project Depth Contour		Red Navigation Buoy
	Cable Area		Green Navigation Buoy
	Anchorage Area		
	Obstruction Point		
	Wrecks-Submerged		



Gage Reading: 2.2 MLLW @ PILOT TOWN @ 1030
 Sea Conditions: CHOPPY
 Vessel Name: BEAUVAIS
 Survey Type: CONDITION, SB
 Sounding Frequency***: LOW



NOTES:
 Horizontal Coordinate System: North American Datum of 1983 (NAD83), projected to the State Plane Coordinate System (SPCS), Louisiana South Zone. Distance units in U.S. Survey Feet.
 Vertical Datum: Soundings are shown in feet and indicate depths below Mean Lower Low Water (MLLW, 07-11). Datum Relationships for gage 01525 as of July 2015: 0.0' NAVD83 = -0.3' MLLW = 3.20' MLG
 Distances on the Mississippi River, above and below Head of Passes are shown at 1 mile intervals.
 The location of navigation aids are base on and provided by the U.S. Coast Guard.
 2016 Aerial Photography data source: Precision Aerial Reconnaissance, LLC (1998 DOQQ in green)
 Reference is N.O.A. Navigation Chart No. 11361.
 ** Shoalest Sounding per Quarter per Reach.
 *** High frequency (200 kHz) survey data represents the first signal return at a sounding location and will include suspended solids, known as "fluff", if present. Low frequency (24 kHz) survey data normally penetrates through this "fluff" layer to depict elevations of consolidated bottom material. Low frequency accuracies may vary depending on channel conditions and fathometer settings.



DISCLAIMER: The United States Government furnishes these data and the recipient accepts and uses them with the express understanding that the data are not warranted for accuracy, completeness, reliability, usability or suitability for any particular purpose of the recipient. The user is responsible for the results obtained from the use of these data. The user is responsible for the results obtained from the use of these data. The user is responsible for the results obtained from the use of these data. The user is responsible for the results obtained from the use of these data.

Submitted:	Checked By:
Recommended:	Checked By:
Approved:	Checked By:

**MISSISSIPPI RIVER - B.R. TO GULF
 SOUTHWEST PASS - SHEET 5
 SW_05_SWP_20190625_CS
 25 June 2019**

**Sheet Reference Number
 5 of 13**

Revision Number: 3.13-20160811