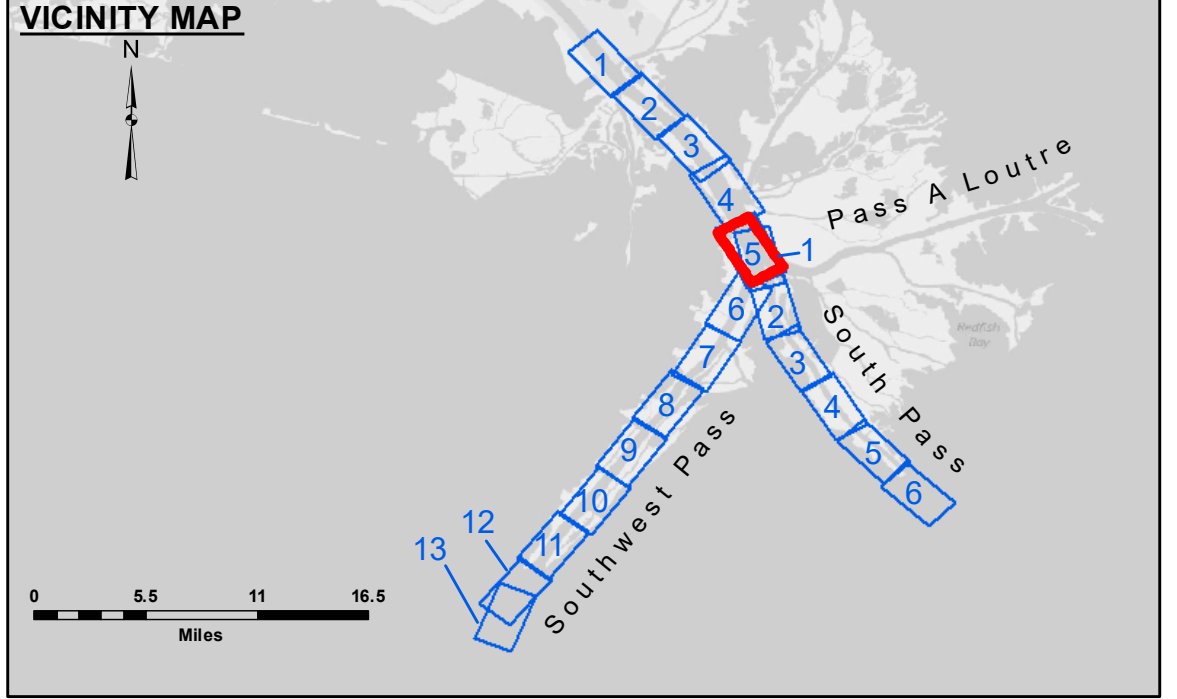


DREDGE STUYVESANT
DREDGING RANGE 60 TO RANGE 34
EAST TOE & 100' WEST OF THE CENTERLINE
SHEETS 4 & 5

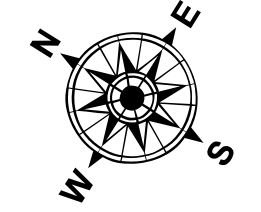
DREDGE WHEELER
DREDGING RANGE 25 TO RANGE 3
FULL CHANNEL WIDTH

DREDGE NEWPORT
DREDGING RANGE 3 TO RANGE 52-B
FULL CHANNEL WIDTH SHEETS 5 & 6

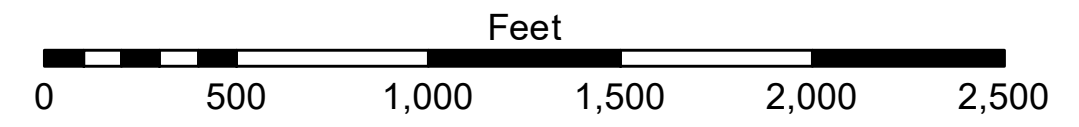


LEGEND

--- Federal Navigation Channel	○ Cable Area	□ Borrow Area	■ -10' and above
--- Federal Navigation Center Line	□ Placement Area	● Shoalest Sounding**	■ -10' to -20'
--- As-built Pipeline/Cable	□ Anchorage Area	☆ Beacon, General	■ -20' to -30'
.... Unconfirmed Pipeline/Cable	⊗ Obstruction Point	★ Red Navigation Buoy	■ -30' to -40'
--- Project Depth Contour	⊘ Wrecks-Submerged	◆ Green Navigation Buoy	■ -40' to -45'
			■ -45' to -48.5'
			■ -48.5' to -55'
			■ -55' and below



Gage Reading: 2.6 MLLW @ PILOT TOWN @ 1055
 Sea Conditions: CALM
 Vessel Name: BEAUVOIS
 Survey Type: CONDITION, SB
 Sounding Frequency***: LOW



NOTES:
 Horizontal Coordinate System:
 North American Datum of 1983 (NAD83), projected to the State Plane
 Coordinate System (SPCS), Louisiana South Zone. Distance units in U.S. Survey Feet.
 Vertical Datum:
 Soundings are shown in feet and indicate depths below Mean Lower Low Water (MLLW, 07-11).
 Datum Relationships for gage 01525 as of July 2015:
 0.0' NAVD88 = -0.3' MLLW = 3.20' MLG
 Distances on the Mississippi River, above and below Head of Passes are shown
 at 1 mile intervals.
 The location of navigation aids are base on and provided by the U.S. Coast Guard.
 2016 Aerial Photography data source: Precision Aerial Reconnaissance, LLC (1998 DOQQ in green)
 Reference is N.O.A. Navigation Chart No. 11361.
 *** Shoalest Sounding per Quarter per Reach.
 **** High frequency (200 kHz) survey data represents the first signal return at a sounding
 location and will include suspended solids, known as "fluff", if present. Low frequency (24 kHz)
 survey data normally penetrates through this "fluff" layer to depict elevations of consolidated bottom
 material. Low frequency accuracies may vary depending on channel conditions and fathometer
 settings.



DISCLAIMER:
 The United States Government furnishes these data and the recipient accepts and uses them with the express understanding that the government makes no warranty, either expressed or implied, concerning the accuracy, completeness, reliability, usability, or suitability for any particular purpose of the data. The user assumes all responsibility for any errors or omissions in the data, under no liability whatsoever to any person by reason of any use made of the data. These data are being provided for informational purposes only. The recipient may not transfer these data to others without also obtaining the disclaimer. The information depicted on the map represents the results of the survey and is not intended to be used for any purpose other than that for which it was collected. The recipient is advised that the data is provided for informational purposes only and should not be used for any other purpose.

**U.S. ARMY CORPS OF ENGINEERS
NEW ORLEANS DISTRICT**

Submitted:	Checked:	Submitted:	Checked:
Surveyed By: JH & MGF	Checked By: TSS	Reviewed By:	Checked By: MSK
Approved:		Approved:	

**MISSISSIPPI RIVER - B. R. TO GULF
SOUTHWEST PASS - SHEET 5
SW_05_SWP_20190702_CS
02 July 2019**

**Sheet Reference
Number
5 of 13**

Revision Number: 3.13-20160811