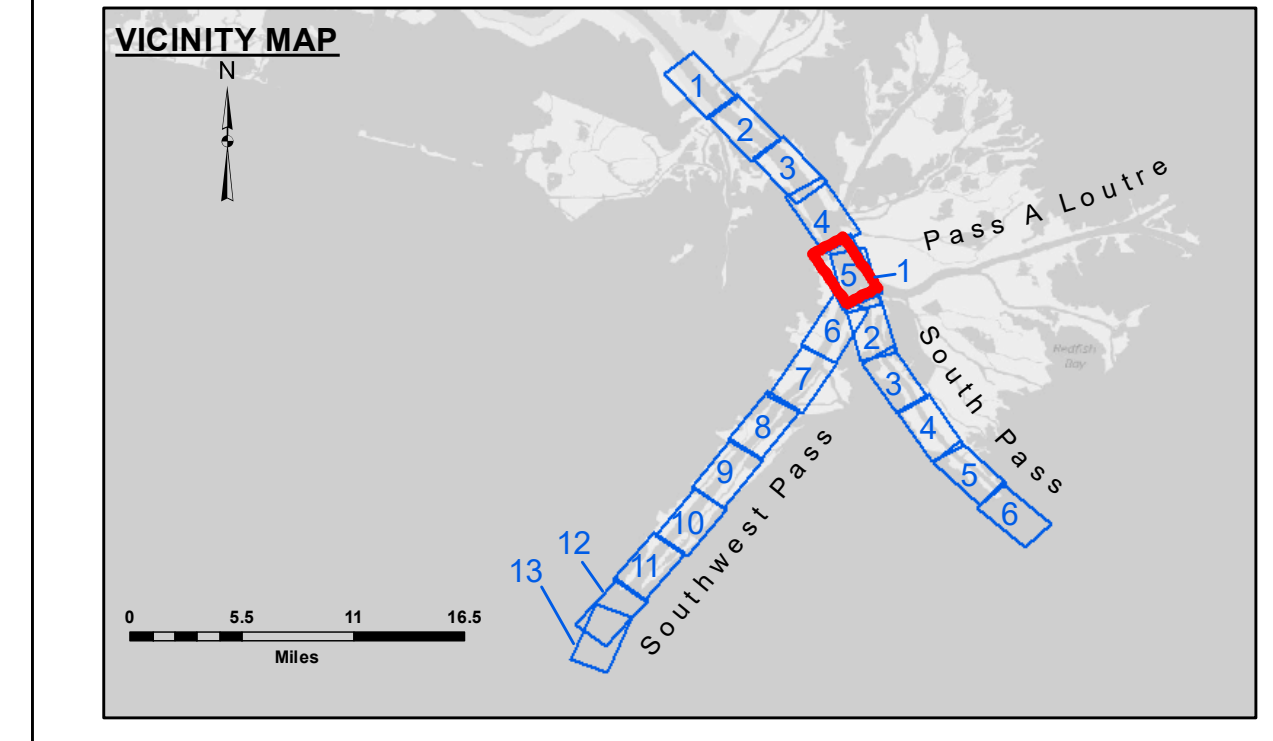


**Accession**  
 The United States Government furnishes these data and the recipient accepts and uses them with the express understanding that they are for official use only and that they are not to be distributed, reproduced, or copied for any purpose other than that for which they were prepared. The user is responsible for the accuracy, completeness, and reliability of the data. The user is responsible for the accuracy, completeness, and reliability of the data. The user is responsible for the accuracy, completeness, and reliability of the data.

Submitted:	Surveyed By: JTB & RCC
Recommended:	Plotted By: RSL
Approved:	Checked By: MSK

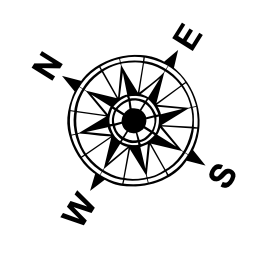
**MISSISSIPPI RIVER - B.R. TO GULF  
 SOUTHWEST PASS - SHEET 5  
 SW\_05\_SWP\_20191202\_CS  
 02 December 2019**

**Sheet Reference Number  
 5 of 13**

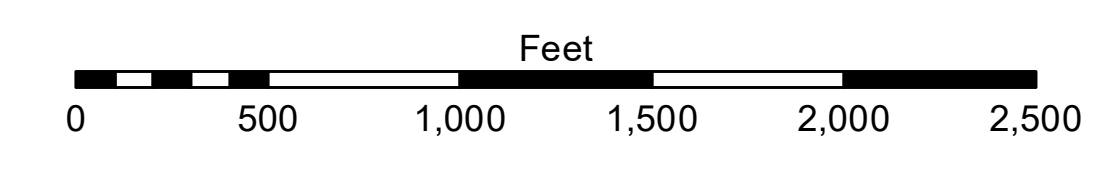


**LEGEND**

--- Federal Navigation Channel	○ Cable Area	□ Borrow Area	■ -10' and above
— Federal Navigation Center Line	□ Placement Area	● Shoalest Sounding**	■ -10' to -20'
— As-built Pipeline/Cable	□ Anchorage Area	★ Beacon, General	■ -20' to -30'
..... Unconfirmed Pipeline/Cable	⊗ Obstruction Point	◆ Red Navigation Buoy	■ -30' to -40'
— Project Depth Contour	⚓ Wrecks-Submerged	◆ Green Navigation Buoy	■ -40' to -45'
			■ -45' to -48.5'
			■ -48.5' to -55'
			■ -55' and below



Gage Reading: 0.4 MLLW @ PILOT TOWN @ 0925  
 Sea Conditions: CHOPPY  
 Vessel Name: JOHN BOPP  
 Survey Type: CONDITION, SB  
 Sounding Frequency\*\*\*: LOW



**NOTES:**  
 Horizontal Coordinate System: North American Datum of 1983 (NAD83), projected to the State Plane Coordinate System (SPCS), Louisiana South Zone. Distance units in U.S. Survey Feet.  
 Vertical Datum: 0.4 MLLW @ PILOT TOWN @ 0925  
 Soundings are shown in feet and indicate depths below Mean Lower Low Water (MLLW, 07-11). Datum Relationships for gage 01525 as of July 2015: 0.0' NAVD83 = -0.3' MLLW = 3.20' MLG  
 Distances on the Mississippi River, above and below Head of Passes are shown at 1 mile intervals.  
 The location of navigation aids are base on and provided by the U.S. Coast Guard.  
 2016 Aerial Photography data source: Precision Aerial Reconnaissance, LLC (1998 DOQQ in green)  
 Reference is N.O.A. Navigation Chart No. 11361.  
 \*\* Shoalest Sounding per Quarter per Reach.  
 \*\*\* High frequency (200 kHz) survey data represents the first signal return at a sounding location and will include suspended solids, known as "fluff", if present. Low frequency (24 kHz) survey data normally penetrates through this "fluff" layer to depict elevations of consolidated bottom material. Low frequency accuracies may vary depending on channel conditions and fathometer settings.