

DISTRIBUTION LIABILITY: The data represents the results of data collection for a specific US Army Corps of Engineers project. It is only valid for its intended use, content, time and accuracy specifications. The user is responsible for the results of any use of the data for other than its intended purpose.

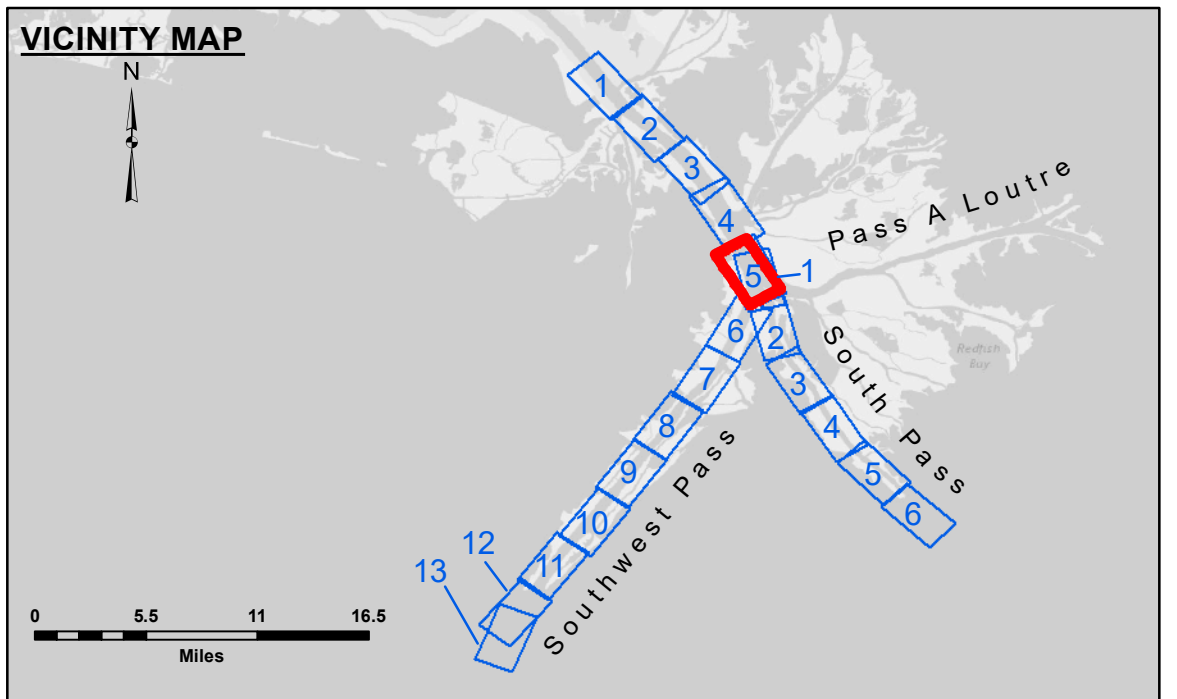
DISCLAIMER: The United States Government furnishes these data and the recipient accepts and uses them with the express understanding that the data are provided for informational purposes only, and that the data are not to be used for any purpose other than that for which they were provided. The recipient may not transfer these data to others without also transferring this Disclaimer. The information depicted on this map represents the results of a survey and is not to be used for any purpose other than that for which it was provided. The recipient may not transfer these data to others without also transferring this Disclaimer. The information depicted on this map represents the results of a survey and is not to be used for any purpose other than that for which it was provided. The recipient may not transfer these data to others without also transferring this Disclaimer.

Submitted:	Surveyed By:	JH & RCC
Recommended:	Plotted By:	TSS
Approved:	Checked By:	MSK

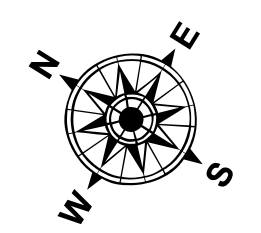
U.S. ARMY CORPS OF ENGINEERS
NEW ORLEANS DISTRICT

**MISSISSIPPI RIVER - B.R. TO GULF
SOUTHWEST PASS - SHEET 5
SW_05_SWP_20200305_CS
05 March 2020**

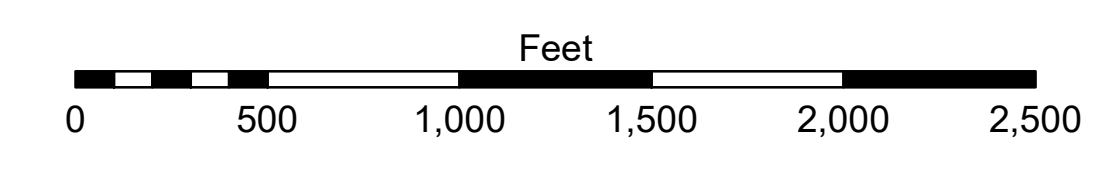
**Sheet Reference Number
5 of 13**



LEGEND	
--- Federal Navigation Channel	● Cable Area
— Federal Navigation Center Line	□ Placement Area
— As-built Pipeline/Cable	□ Anchorage Area
..... Unconfirmed Pipeline/Cable	⊗ Obstruction Point
— Project Depth Contour	★ Wrecks-Submerged
□ Borrow Area	★ Beacon, General
● Shoalest Sounding**	◆ Red Navigation Buoy
★ Beacon, General	◆ Green Navigation Buoy
■ -10' and above	
■ -10' to -20'	
■ -20' to -30'	
■ -30' to -40'	
■ -40' to -45'	
■ -45' to -48.5'	
■ -48.5' to -55'	
■ -55' and below	



Gage Reading: 2.4 MLLW @ PILOT TOWN @ 1020
Sea Conditions: CALM
Vessel Name: JOHN BOPP
Survey Type: CONDITION, SB
Sounding Frequency***: LOW



NOTES:
Horizontal Coordinate System: North American Datum of 1983 (NAD83), projected to the State Plane Coordinate System (SPCS), Louisiana South Zone. Distance units in U.S. Survey Feet.
Vertical Datum: 2.4 MLLW @ PILOT TOWN @ 1020
Soundings are shown in feet and indicate depths below Mean Lower Low Water (MLLW, 07-11). Datum Relationships for gage 01525 as of July 2015: 0.0' NAVD83 = -0.3' MLLW = 3.20' MLG
Distances on the Mississippi River, above and below Head of Passes are shown at 1 mile intervals.
The location of navigation aids are base on and provided by the U.S. Coast Guard.
2016 Aerial Photography data source: Precision Aerial Reconnaissance, LLC (1998 DOQQ in green)
Reference is N.O.A. Navigation Chart No. 11361.
** Shoalest Sounding per Quarter per Reach.
*** High frequency (200 kHz) survey data represents the first signal return at a sounding location and will include suspended solids, known as "fluff", if present. Low frequency (24 kHz) survey data normally penetrates through this "fluff" layer to depict elevations of consolidated bottom material. Low frequency accuracies may vary depending on channel conditions and fathometer settings.