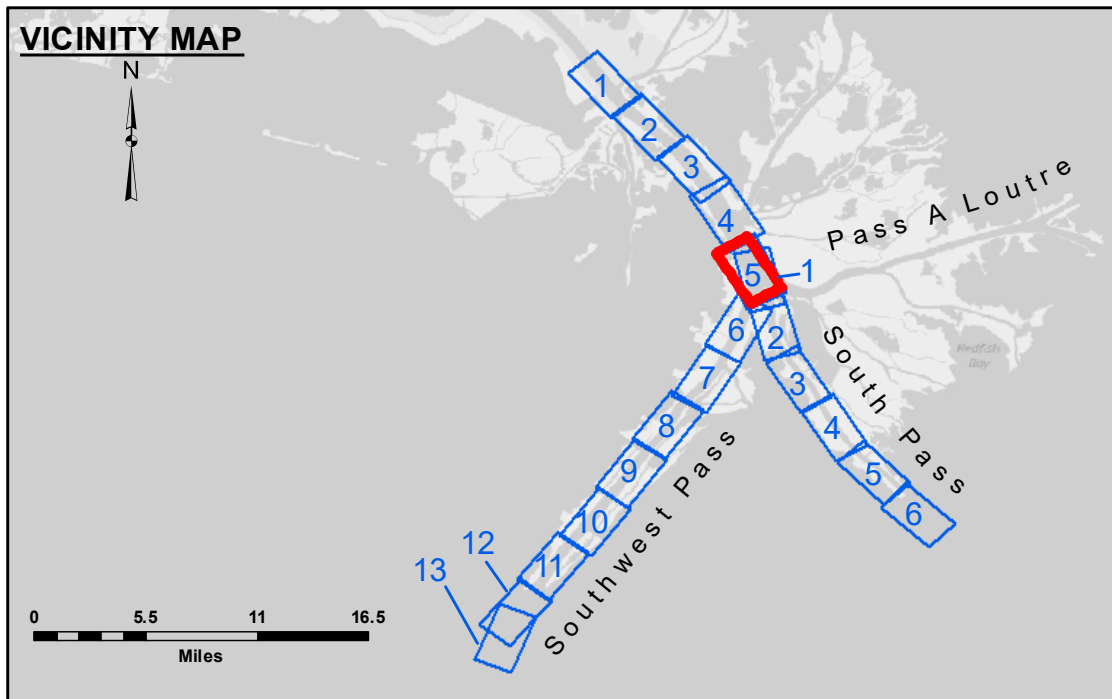


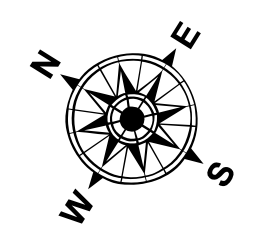
HOPPER DREDGE NEWPORT
DREDGING RGS 37 ON SHT 4
TO RG 22 ON SHT 5
FULL CHANNEL WIDTH

HOPPER DREDGE GLENN EDWARDS
DREDGING RGS 22 ON SHT 5
TO RG 56-B ON SHT 6
FULL CHANNEL WIDTH

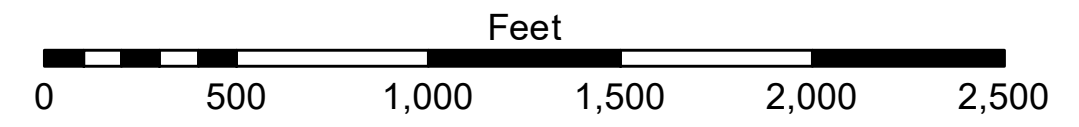
PILOT TOWN ANCHORAGE
An area approximately 5.2 miles in length along the right descending bank or west side of the river. The east limit of the anchorage area at the upper end is approximately 1,500 feet from the east bank at Mile 6.7 above Head of Passes and extends downstream generally by sea belt and 1,500 feet from the east bank line to a point directly opposite Old Dismal Light at Mile 3.7 above Head of Passes, thence to a point 1,500 feet directly opposite Pilot Town Light at Mile 2.3 above Head of Passes, thence to a point 1,500 feet directly opposite Pilot Town Light at Mile 1.5 above Head of Passes, which is the downstream limit of the anchorage area.



LEGEND			
--- Federal Navigation Channel	● Cable Area	□ Borrow Area	■ -10' and above
— Federal Navigation Center Line	□ Placement Area	● Shoalest Sounding**	■ -10' to -20'
— As-built Pipeline/Cable	□ Anchorage Area	★ Beacon, General	■ -20' to -30'
..... Unconfirmed Pipeline/Cable	⊗ Obstruction Point	★ Red Navigation Buoy	■ -30' to -40'
— Project Depth Contour	⊗ Wrecks-Submerged	★ Green Navigation Buoy	■ -40' to -45'
			■ -45' to -48.5'
			■ -48.5' to -55'
			■ -55' and below



Gage Reading: 2.5 MLLW @ PILOT TOWN @ 1105
 Sea Conditions: CALM
 Vessel Name: JOHN BOPP
 Survey Type: CONDITION, SB
 Sounding Frequency***: LOW



NOTES:
 Horizontal Coordinate System: North American Datum of 1983 (NAD83), projected to the State Plane Coordinate System (SPCS), Louisiana South Zone. Distance units in U.S. Survey Feet.
 Vertical Datum: Soundings are shown in feet and indicate depths below Mean Lower Low Water (MLLW, 07-11). Datum Relationships for gage 01525 as of July 2015: 0.0' NAVD88 = -0.3' MLLW = 3.20' MLG
 Distances on the Mississippi River, above and below Head of Passes are shown at 1 mile intervals.
 The location of navigation aids are base on and provided by the U.S. Coast Guard.
 2016 Aerial Photography data source: Precision Aerial Reconnaissance, LLC (1998 DOQQ in green)
 Reference is N.O.A. Navigation Chart No. 11361.
 ** Shoalest Sounding per Quarter per Reach.
 *** High frequency (200 kHz) survey data represents the first signal return at a sounding location and will include suspended solids, known as "fluff", if present. Low frequency (24 kHz) survey data normally penetrates through this "fluff" layer to depict elevations of consolidated bottom material. Low frequency accuracies may vary depending on channel conditions and fathometer settings.



DISCLAIMER: The United States Government furnishes these data and the recipient accepts and uses them with the express understanding that the data are not warranted for any purpose other than that for which they were prepared, or implied concerning the accuracy, completeness, reliability, usability or suitability for any particular purpose of the recipient. The user is responsible for the results obtained from the use of these data. The user shall indemnify and hold the United States Government harmless from and against all claims, damages, losses and expenses, including reasonable attorneys' fees, that may be incurred by the United States Government as a result of the use of these data. The recipient may not transfer these data to others without also transferring this disclaimer. The information depicted on the map represents the results of a survey conducted on or about the date of the survey. The information is not intended to be used for any purpose other than that for which it was prepared. The recipient shall not be held liable for any damage or injury resulting from the use of this information.

U.S. ARMY CORPS OF ENGINEERS NEW ORLEANS DISTRICT		
Submitted:	Surveyed By: JH & RCC	Plotted By: LLB
Recommended:	Checked By: MSK	Approved:

**MISSISSIPPI RIVER - B.R. TO GULF
 SOUTHWEST PASS - SHEET 5
 SW_05_SWP_20200420_CS
 20 April 2020**

**Sheet Reference Number
 5 of 13**

Revision Number:
 4.0-201-907022