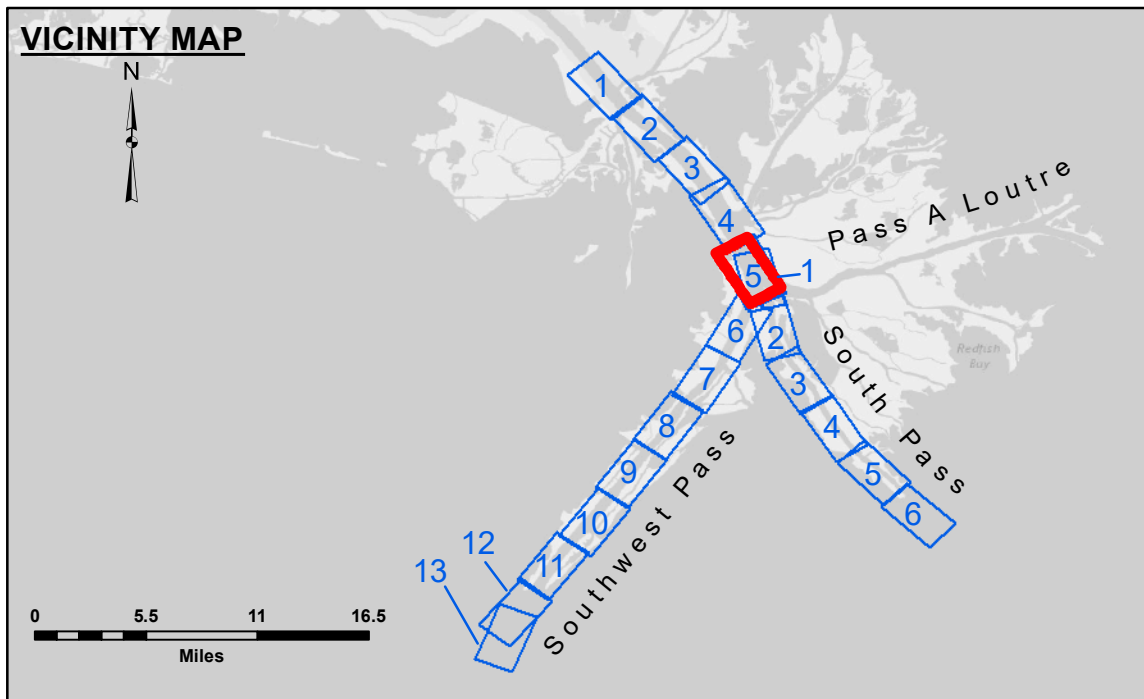


DREDGE NEWPORT
DREDGING RANGE 51 TO RANGE 27
FULL CHANNEL WIDTH SHEETS 4 & 5

DREDGE GLENN EDWARDS
DREDGING RANGE 27 TO RANGE 1-A
FULL CHANNEL WIDTH



LEGEND

--- Federal Navigation Channel	○ Cable Area	□ Borrow Area	■ -10' and above
— Federal Navigation Center Line	□ Placement Area	● Shoalest Sounding**	■ -10' to -20'
— As-built Pipeline/Cable	□ Anchorage Area	★ Beacon, General	■ -20' to -30'
..... Unconfirmed Pipeline/Cable	⊗ Obstruction Point	◆ Red Navigation Buoy	■ -30' to -40'
— Project Depth Contour	⚓ Wrecks-Submerged	◆ Green Navigation Buoy	■ -40' to -45'
			■ -45' to -48.5'
			■ -48.5' to -55'
			■ -55' and below

NOTES:

Horizontal Coordinate System: North American Datum of 1983 (NAD83), projected to the State Plane Coordinate System (SPCS), Louisiana South Zone. Distance units in U.S. Survey Feet.

Vertical Datum: Soundings are shown in feet and indicate depths below Mean Lower Low Water (MLLW, 07-11). Datum Relationships for gage 01525 as of July 2015: 0.0' NAVD88 = -0.3' MLLW = 3.20' MLG

Distances on the Mississippi River, above and below Head of Passes are shown at 1 mile intervals.

The location of navigation aids are base on and provided by the U.S. Coast Guard.

2016 Aerial Photography data source: Precision Aerial Reconnaissance, LLC (1998 DOQQ in green)

Reference is N.O.A. Navigation Chart No. 11361.

** Shoalest Sounding per Quarter per Reach.

*** High frequency (200 kHz) survey data represents the first signal return at a sounding location and will include suspended solids, known as "fluff", if present. Low frequency (24 kHz) survey data normally penetrates through this "fluff" layer to depict elevations of consolidated bottom material. Low frequency accuracies may vary depending on channel conditions and fathometer settings.

Gage Reading: 2.3 MLLW @ PILOT TOWN @ 1130
 Sea Conditions: CALM
 Vessel Name: JOHN BOPP
 Survey Type: CONDITION, SB
 Sounding Frequency***: LOW

Scale: 0 to 2,500 Feet



DISCLAIMER

The United States Government furnishes these data and the recipient accepts and uses them with the express understanding that the data are not to be used for any purpose other than that for which they were prepared, or implied concerning the accuracy, completeness, reliability, usability or suitability for any particular purpose of the recipient. The recipient is responsible for the results of any use of the data under no liability whatsoever to any person by reason of any use of the data. The recipient agrees to indemnify and hold the United States Government harmless from and against all claims, damages, losses and expenses, including reasonable attorneys' fees, that may be incurred by the United States Government as a result of the recipient's use of the data. The recipient may not transfer these data to others without also transferring this disclaimer. The information depicted on this map represents the results of a survey conducted on or about the date of the survey. It is not intended to represent the general condition existing at that time.

U.S. ARMY CORPS OF ENGINEERS
NEW ORLEANS DISTRICT

Submitted:	Reviewed:	Approved:
Surveyed By: JH & RCC	Plotted By: TSS	Checked By: MSK

**MISSISSIPPI RIVER - B. R. TO GULF
SOUTHWEST PASS - SHEET 5
SW_05_SWP_20200430_CS_PRO**

30 April 2020

Sheet Reference Number
5 of 13

Revision Number:
415-20190102