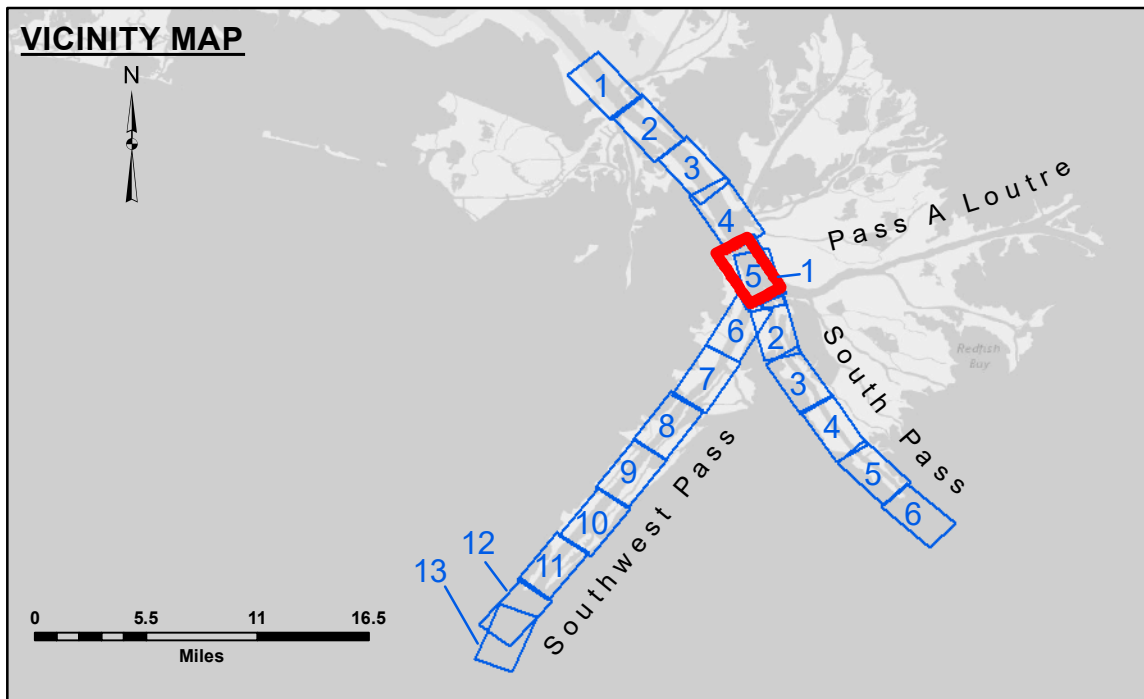
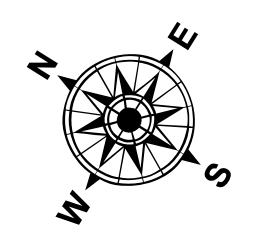


DREDGE GLENN EDWARDS
DREDGING STATION 2920+00 TO STATION 3080+00
EAST TOE & 375' WEST OF THE EAST TOE
SHEETS 3, 4 & 5

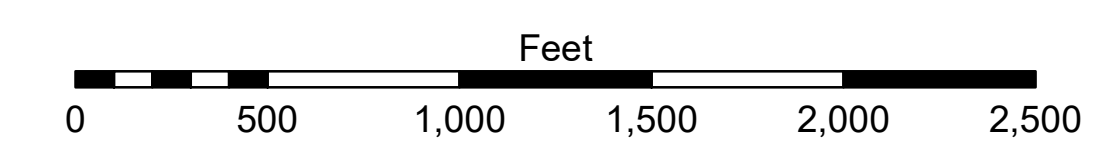
PILOT TOWN ANCHORAGE
An area approximately 5.2 miles in length along the right descending bank or west side of the river. The east limit of the anchorage area at the upstream end starts at a point approximately 1,000 feet from the east bank at Mile 6.7 above Head of Passes and extends downstream generally parallel to and 1,600 feet from the east bank line to a point directly opposite Old Quarantine Station Light at Mile 3.7 above Head of Passes. There is a point 1,000 feet directly opposite the Cubits Gap Light at Mile 2.8 above Head of Passes, thence to a point 1,600 feet directly opposite Pilotown Wingdam Light at Mile 1.5 above Head of Passes, which is the downstream limit of the anchorage area.



LEGEND			
--- Federal Navigation Channel	○ Cable Area	□ Borrow Area	■ -10' and above
— Federal Navigation Center Line	□ Placement Area	● Shoalest Sounding**	■ -10' to -20'
— As-built Pipeline/Cable	□ Anchorage Area	★ Beacon, General	■ -20' to -30'
..... Unconfirmed Pipeline/Cable	⊗ Obstruction Point	◆ Red Navigation Buoy	■ -30' to -40'
— Project Depth Contour	⚓ Wrecks-Submerged	◆ Green Navigation Buoy	■ -40' to -45'
			■ -45' to -48.5'
			■ -48.5' to -55'
			■ -55' and below



Gage Reading: -0.10 MLLW @ PILOT TOWN @ 1235
Sea Conditions: CALM
Vessel Name: JOHN BOPP
Survey Type: CONDITION, SB
Sounding Frequency***: LOW



NOTES:
Horizontal Coordinate System: North American Datum of 1983 (NAD83), projected to the State Plane Coordinate System (SPCS), Louisiana South Zone. Distance units in U.S. Survey Feet.
Vertical Datum: Soundings are shown in feet and indicate depths below Mean Lower Low Water (MLLW, 12-16). Datum Relationships for gage 01525 as of March 2020: 0.0' NAVD88, 2009.55 = -0.53' MLLW = 2.97' MLG
Distances on the Mississippi River, above and below Head of Passes are shown at 1 mile intervals.
The location of navigation aids are based on and provided by the U.S. Coast Guard.
2016 Aerial Photography data source: Precision Aerial Reconnaissance, LLC (1998 DOQQ in green)
Reference is N.O.A. Navigation Chart No. 11361.
** Shoalest Sounding per Quarter per Reach.
*** High frequency (200 kHz) survey data represents the first signal return at a sounding location and will include suspended solids, known as "fluff", if present. Low frequency (24 kHz) survey data normally penetrates through this "fluff" layer to depict elevations of consolidated bottom material. Low frequency accuracies may vary depending on channel conditions and fathometer settings.



DISTRIBUTION LIABILITY: The data represents the results of data collection/processing for a specific US Army Corps of Engineers project. It is only valid for its intended use, content, time and accuracy specifications. The user is responsible for the results and accuracy of the data for other than its intended purpose.
Data Constants: Hydrographic survey data is subject to change and may not be used for navigation purposes. The user is responsible for the accuracy of the data for other than its intended purpose. The user is responsible for the accuracy of the data for other than its intended purpose. The user is responsible for the accuracy of the data for other than its intended purpose.

DISCLAIMER: The United States Government furnishes these data and the recipient accepts and uses them with the express understanding that the data are not to be used for any purpose other than that for which they were prepared, and that the data are not to be used for any purpose other than that for which they were prepared. The recipient is responsible for the accuracy of the data for other than its intended purpose. The recipient is responsible for the accuracy of the data for other than its intended purpose. The recipient is responsible for the accuracy of the data for other than its intended purpose.

U.S. ARMY CORPS OF ENGINEERS NEW ORLEANS DISTRICT			
Submitted:	Surveyed By: JH & RCC	Plotted By: TSS	Checked By: MSK
Recommended:	Chief, Survey Section		
Approved:	Chief, Waterways Maintenance Section		

**MISSISSIPPI RIVER - B.R. TO GULF
SOUTHWEST PASS - SHEET 5
SW_05_SWP_20210211_CS_PRO
11 February 2021**

**Sheet Reference Number
5 of 13**

Revision Number: 4.1-20191015