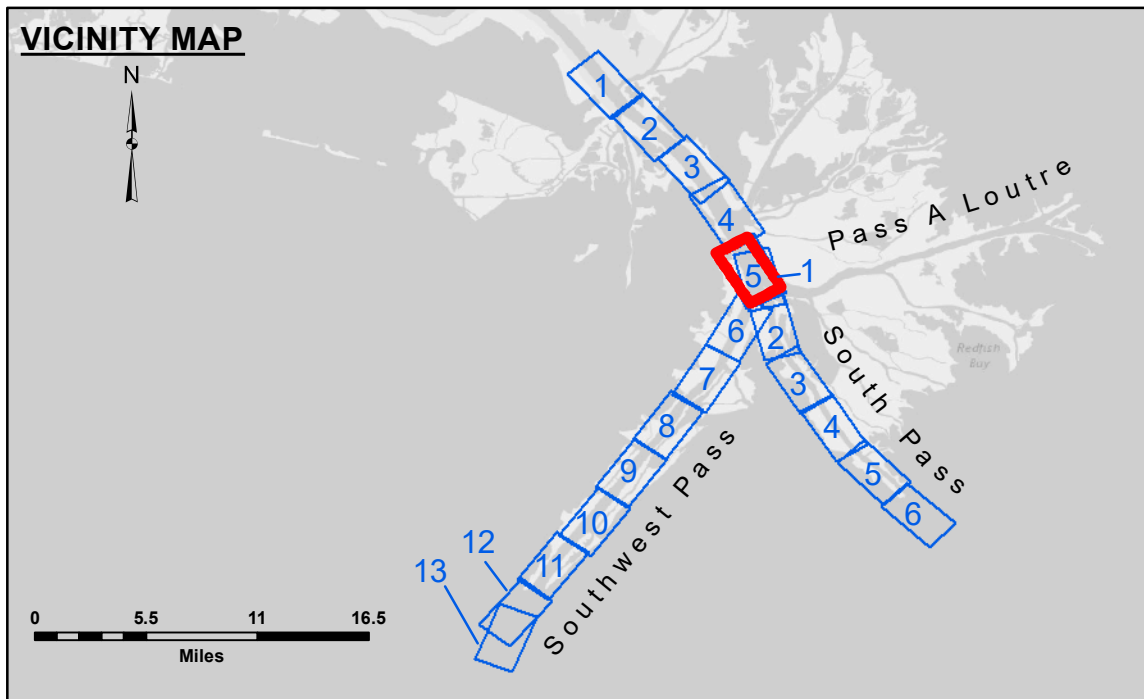
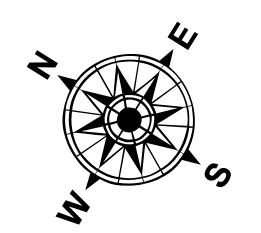


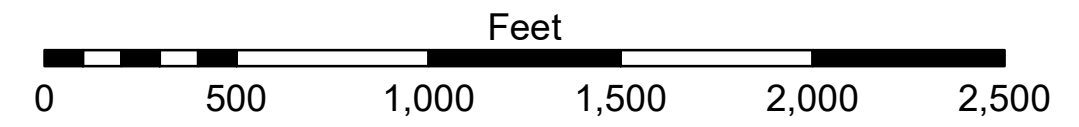
DREDGE GLENN EDWARDS
DREDGING STATION 65+00 TO STATION 175+00
EAST TOE & 375' WEST OF THE EAST TOE
SHEETS 5 & 6



LEGEND			
--- Federal Navigation Channel	○ Cable Area	□ Borrow Area	■ -10' and above
— Federal Navigation Center Line	□ Placement Area	● Shoalest Sounding**	■ -10' to -20'
— As-built Pipeline/Cable	□ Anchorage Area	★ Beacon, General	■ -20' to -30'
..... Unconfirmed Pipeline/Cable	⊗ Obstruction Point	◆ Red Navigation Buoy	■ -30' to -40'
— Project Depth Contour	⚓ Wrecks-Submerged	◆ Green Navigation Buoy	■ -40' to -45'
			■ -45' to -50'
			■ -50' to -55'
			■ -55' and below



Gage Reading: 0.8 MLLW @ HEAD OF PASSES @ 0955
 Sea Conditions: CHOPPY
 Vessel Name: BLANCHARD
 Survey Type: CONDITION, SB
 Sounding Frequency***: LOW



NOTES:
 Horizontal Coordinate System: North American Datum of 1983 (NAD83), projected to the State Plane Coordinate System (SPCS), Louisiana South Zone. Distance units in U.S. Survey Feet.
 Vertical Datum: 0.1545 (0.0' GAGE) = -0.15 NAVD83, 2009.55 = -0.47' MLLW; (12-16)
 Soundings are shown in feet and indicate depths below Mean Lower Low Water (MLLW, 12-16). Datum Relationships for gage 01525 as of March 2020: 0.0' NAVD83, 2009.55 = -0.53' MLLW = 2.97' MLG
 Distances on the Mississippi River, above and below Head of Passes are shown at 1 mile intervals.
 The location of navigation aids are base on and provided by the U.S. Coast Guard.
 2016 Aerial Photography data source: Precision Aerial Reconnaissance, LLC (1998 DOQQ in green)
 Reference is N.O.A. Navigation Chart No. 11361.
 ** Shoalest Sounding per Quarter per Reach.
 *** High frequency (200 kHz) survey data represents the first signal return at a sounding location and will include suspended solids, known as "fluff", if present. Low frequency (24 kHz) survey data normally penetrates through this "fluff" layer to depict elevations of consolidated bottom material. Low frequency accuracies may vary depending on channel conditions and fathometer settings.



DISCLAIMER: The United States Government furnishes these data and the recipient accepts and uses them with the express understanding that the data are not to be used for any purpose other than that for which they were originally prepared, or implied concerning the accuracy, completeness, reliability, usability or suitability for any particular purpose of the recipient. The user is responsible for the results obtained from the use of these data. The Corps of Engineers does not warrant, under no liability whatsoever to any person by reason of any use, that the data are correct, complete, or suitable for any other purpose. The recipient agrees to indemnify the Corps of Engineers from and hold the Corps of Engineers harmless from any and all claims, damages, losses, and expenses, including reasonable attorneys' fees, that may be asserted against the Corps of Engineers or its employees, agents, or contractors, arising out of or from the use of these data in any manner other than that for which they were originally prepared. The information depicted on the map represents the results of a survey conducted on or about the date of the survey. The Corps of Engineers does not warrant that the information is current or that the hydrographical conditions which develop after the date of the survey will be the same as those shown on the map. The Corps of Engineers is not responsible for any damage or injury to persons or property resulting from the use of these data. Product maintainers should not rely solely upon it.

U.S. ARMY CORPS OF ENGINEERS NEW ORLEANS DISTRICT		
Submitted:	Surveyed By: JTB & DED	Plotted By: TSS
Recommended:	Checked By: MSK	Approved:

MISSISSIPPI RIVER - B. R. TO GULF
SOUTHWEST PASS - SHEET 5
SW_05_SWP_20210303_CS_PRO
03 March 2021

Sheet Reference Number
5 of 13

Revision Number:
4.1-20191105