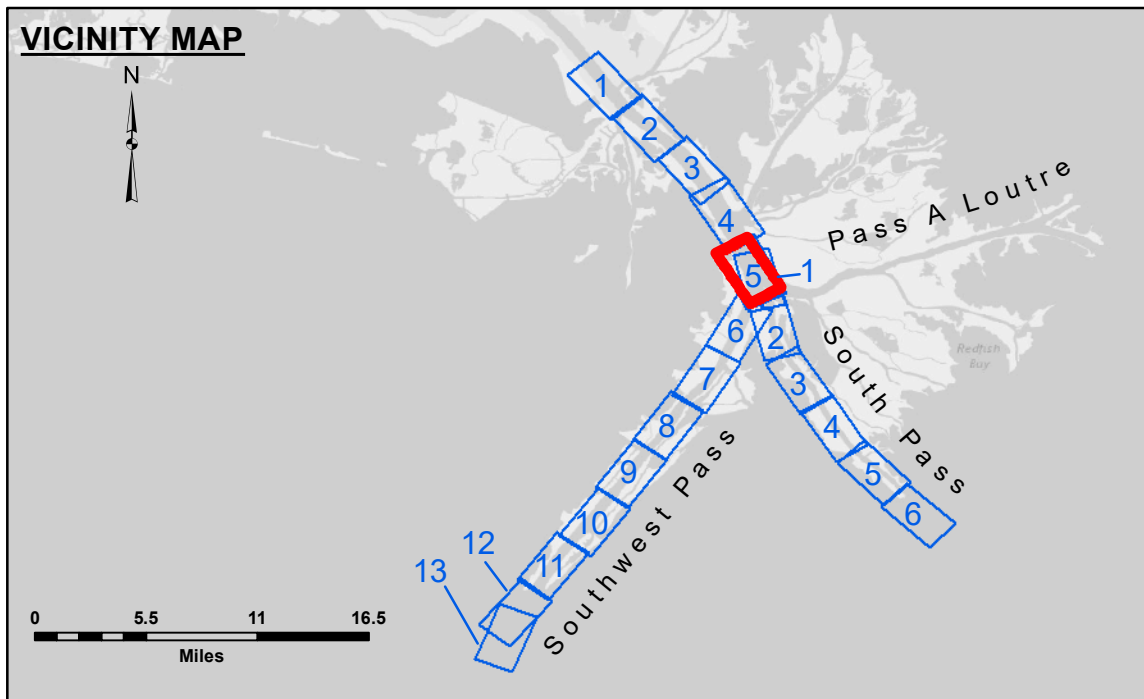
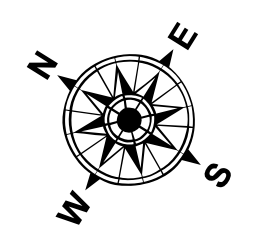


**DREDGE GLENN EDWARDS
DREDGING STATION 5+00 TO STATION 110+00
FULL CHANNEL WIDTH**

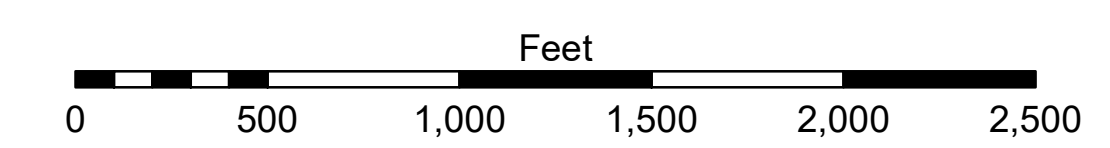


LEGEND

--- Federal Navigation Channel	○ Cable Area	□ Borrow Area	■ -10' and above
— Federal Navigation Center Line	□ Placement Area	● Shoalest Sounding**	■ -10' to -20'
— As-built Pipeline/Cable	□ Anchorage Area	★ Beacon, General	■ -20' to -30'
..... Unconfirmed Pipeline/Cable	⊗ Obstruction Point	◆ Red Navigation Buoy	■ -30' to -40'
— Project Depth Contour	⚓ Wrecks-Submerged	◆ Green Navigation Buoy	■ -40' to -45'
			■ -45' to -50'
			■ -50' to -55'
			■ -55' and below



Gage Reading: 1.0 MLLW @ PILOT TOWN @ 1345
 Sea Conditions: CALM
 Vessel Name: BLANCHARD
 Survey Type: CONDITION, SB
 Sounding Frequency***: LOW



NOTES:
 Horizontal Coordinate System: North American Datum of 1983 (NAD83), projected to the State Plane Coordinate System (SPCS), Louisiana South Zone. Distance units in U.S. Survey Feet.
 Vertical Datum: Soundings are shown in feet and indicate depths below Mean Lower Low Water (MLLW, 12-16). Datum Relationships for gage 01525 as of March 2020: 0.0' NAVD88, 2009.55 = -0.53' MLLW = 2.97' MLG
 Distances on the Mississippi River, above and below Head of Passes are shown at 1 mile intervals.
 The location of navigation aids are base on and provided by the U.S. Coast Guard.
 2016 Aerial Photography data source: Precision Aerial Reconnaissance, LLC (1998 DOQQ in green)
 Reference is N.O.A. Navigation Chart No. 11361.
 ** Shoalest Sounding per Quarter per Reach.
 *** High frequency (200 kHz) survey data represents the first signal return at a sounding location and will include suspended solids, known as "fluff", if present. Low frequency (24 kHz) survey data normally penetrates through this "fluff" layer to depict elevations of consolidated bottom material. Low frequency accuracies may vary depending on channel conditions and fathometer settings.



DISCLAIMER: The United States Government furnishes these data and the recipient accepts and uses them with the express understanding that the data are not to be used for any purpose other than that for which they were prepared, or implied concerning the accuracy, completeness, reliability, usability or suitability for any particular purpose of the recipient. The recipient understands that the data are provided under no liability whatsoever to any person by reason of any use, misuse, or reliance on these data. The recipient agrees to indemnify and hold the United States Government harmless from and against all claims, damages, and expenses, including reasonable attorneys' fees, that may be asserted against or incurred by the United States Government or its employees, agents, or contractors, in connection with the use of these data. The recipient agrees to release the United States Government from and against all claims, damages, and expenses, including reasonable attorneys' fees, that may be asserted against or incurred by the recipient or its employees, agents, or contractors, in connection with the use of these data. The recipient agrees to release the United States Government from and against all claims, damages, and expenses, including reasonable attorneys' fees, that may be asserted against or incurred by the recipient or its employees, agents, or contractors, in connection with the use of these data. The recipient agrees to release the United States Government from and against all claims, damages, and expenses, including reasonable attorneys' fees, that may be asserted against or incurred by the recipient or its employees, agents, or contractors, in connection with the use of these data.

U.S. ARMY CORPS OF ENGINEERS
NEW ORLEANS DISTRICT

Submitted:	Surveyed By: JH & DBD
Recommended: Chief, Survey Section	Plotted By: TSS
Approved: Chief, Waterways Maintenance Section	Checked By: MSK

**MISSISSIPPI RIVER - B. R. TO GULF
SOUTHWEST PASS - SHEET 5
SW_05_SWP_20210512_CS_PRO
12 May 2021**

**Sheet Reference Number
5 of 13**

Revision Number:
4.1-20191015