

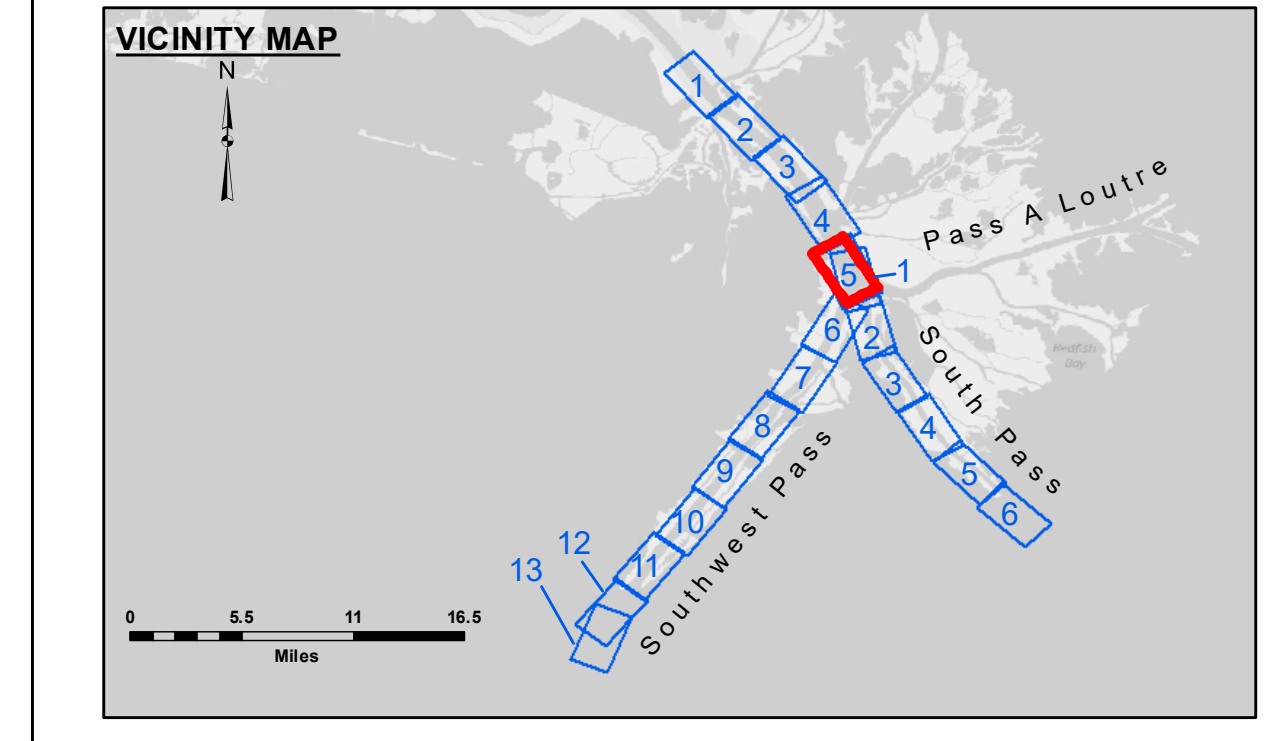
Distribution Liability: The data represents the results of data collection processing for a specific US Army Corps of Engineers project. It is only valid for its intended use, content, time and accuracy specifications. The user is responsible for the results. The Corps of Engineers does not warrant the data for other than its intended purpose.

Data: Constant Hydrographic survey data is subject to change rapidly due to several factors including but not limited to dredging operations, changes in channel depth, changes in the location of obstructions, changes in the hydrographic conditions which develop after the date of the survey, and changes in the methods used in the data collection process. The information depicted on the map represents the results of the survey and is considered current as of the date of the survey. It is not intended to represent the general condition existing at that time.

U.S. ARMY CORPS OF ENGINEERS NEW ORLEANS DISTRICT	
Surveyed By: JTB & DBD	Plotted By: RSL
Submitted:	Checked By: MSK
Recommended: Chief Survey Section	Approved: Chief Waterways Maintenance Section

MISSISSIPPI RIVER - B.R. TO GULF
SOUTHWEST PASS - SHEET 5
 SW_05_SWP_20210712_CS
 12 July 2021

Sheet Reference Number
 5 of 13



LEGEND			
Federal Navigation Channel	Cable Area	Placement Area	Borrow Area
Federal Navigation Center Line	Anchorage Area	Shoalest Sounding**	Beacons, General
As-built Pipeline/Cable	Obstruction Point	Red Navigation Buoy	Green Navigation Buoy
Unconfirmed Pipeline/Cable	Wrecks-Submerged		
Project Depth Contour			

Gage Reading: 1.1 MLLW @ PILOT TOWN @ 0940
 Sea Conditions: CHOPPY
 Vessel Name: BLANCHARD
 Survey Type: CONDITION, SB
 Sounding Frequency***: LOW

Vertical Datum: North American Datum of 1983 (NAD83), projected to the State Plane Coordinate System (SPCS), Louisiana South Zone. Distance units in U.S. Survey Feet.
 Soundings are shown in feet and indicate depths below Mean Lower Low Water (MLLW, 12-16).
 Datum Relationships for gage 01525 as of March 2020:
 0.0' NAVD83, 2009.55 = -0.53' MLLW = 2.97' MLG
 Distances on the Mississippi River, above and below Head of Passes are shown at 1 mile intervals.
 The location of navigation aids are based on and provided by the U.S. Coast Guard.
 2016 Aerial Photography data source: Precision Aerial Reconnaissance, LLC (1998 DOQQ in green)
 Reference is N.O.A. Navigation Chart No. 11361.
 ** Shoalest Sounding per Quarter per Reach.
 *** High frequency (200 kHz) survey data represents the first signal return at a sounding location and will include suspended solids, known as "fluff", if present. Low frequency (24 kHz) survey data normally penetrates through this "fluff" layer to depict elevations of consolidated bottom material. Low frequency accuracies may vary depending on channel conditions and fathometer settings.

NOTES:
 Horizontal Coordinate System: North American Datum of 1983 (NAD83), projected to the State Plane Coordinate System (SPCS), Louisiana South Zone. Distance units in U.S. Survey Feet.
 Vertical Datum: North American Datum of 1983 (NAD83), projected to the State Plane Coordinate System (SPCS), Louisiana South Zone. Distance units in U.S. Survey Feet.
 Soundings are shown in feet and indicate depths below Mean Lower Low Water (MLLW, 12-16).
 Datum Relationships for gage 01525 as of March 2020:
 0.0' NAVD83, 2009.55 = -0.53' MLLW = 2.97' MLG
 Distances on the Mississippi River, above and below Head of Passes are shown at 1 mile intervals.
 The location of navigation aids are based on and provided by the U.S. Coast Guard.
 2016 Aerial Photography data source: Precision Aerial Reconnaissance, LLC (1998 DOQQ in green)
 Reference is N.O.A. Navigation Chart No. 11361.
 ** Shoalest Sounding per Quarter per Reach.
 *** High frequency (200 kHz) survey data represents the first signal return at a sounding location and will include suspended solids, known as "fluff", if present. Low frequency (24 kHz) survey data normally penetrates through this "fluff" layer to depict elevations of consolidated bottom material. Low frequency accuracies may vary depending on channel conditions and fathometer settings.