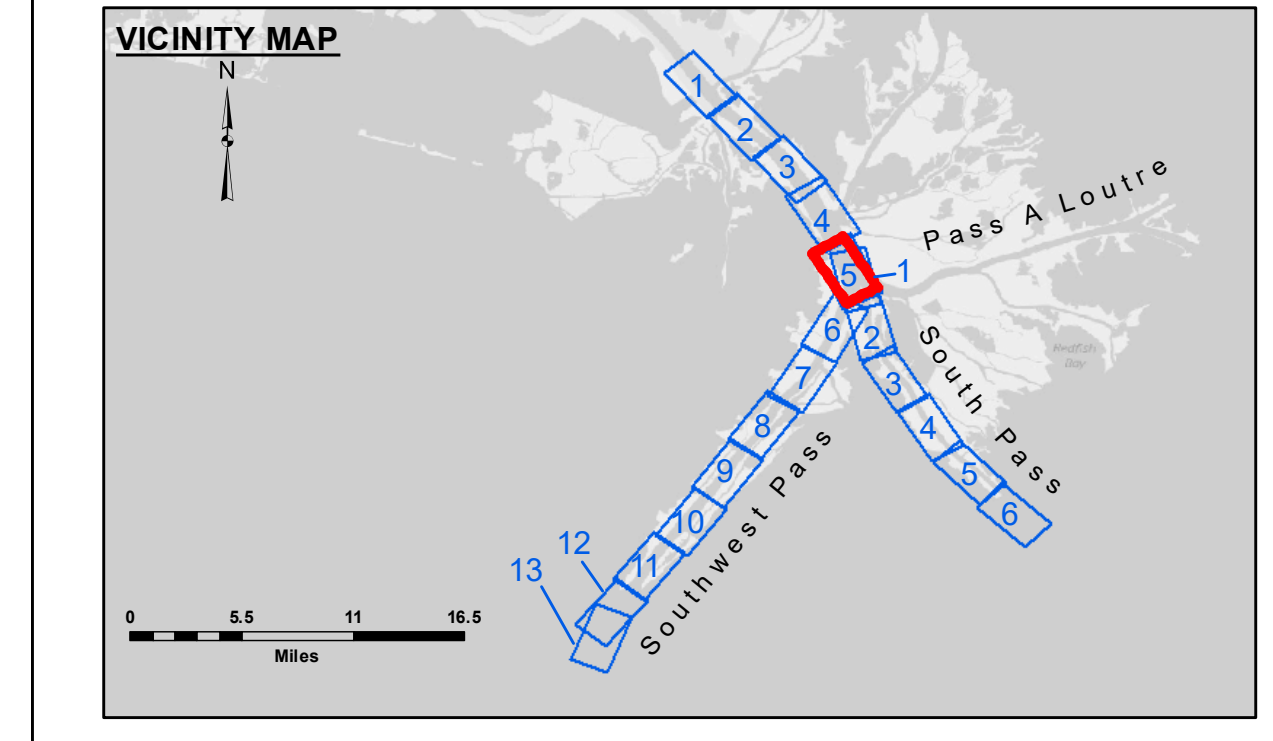


ACCESS NOTES
 Access Constraints: The United States Government furnishes these data and the recipient accepts and uses them with the express understanding that the data are not to be used for any purpose other than that for which they were provided. The user is responsible for the results of any use of the data. The data are not to be used for any purpose other than that for which they were provided. The user is responsible for the results of any use of the data. The data are not to be used for any purpose other than that for which they were provided. The user is responsible for the results of any use of the data.

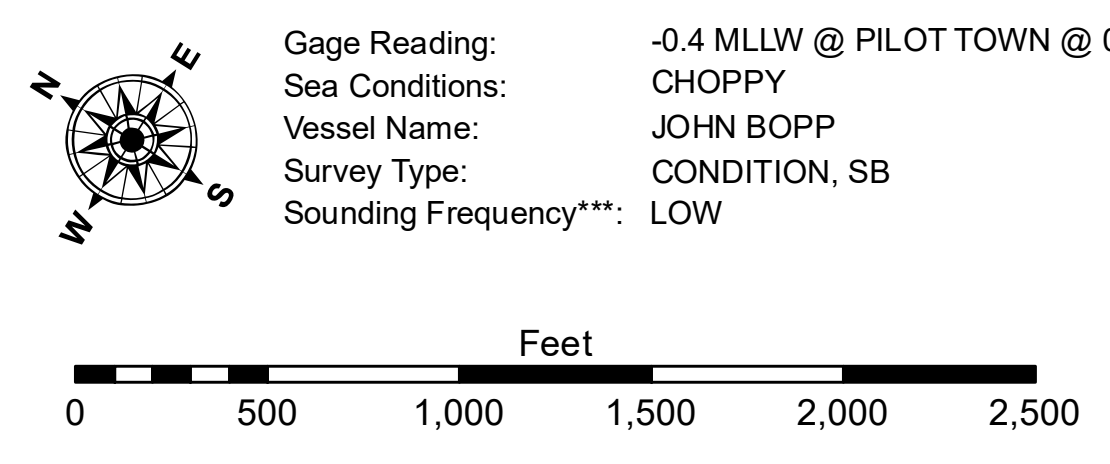
Submitted:	Checked By:
Recommended:	Checked By:
Approved:	Checked By:

**MISSISSIPPI RIVER - B.R. TO GULF
 SOUTHWEST PASS - SHEET 5
 SW_05_SWP_20220201_CS
 01 February 2022**

**Sheet Reference Number
 5 of 13**



LEGEND	
- - - Federal Navigation Channel	○ Cable Area
— Federal Navigation Center Line	□ Placement Area
— As-built Pipeline/Cable	□ Anchorage Area
..... Unconfirmed Pipeline/Cable	⊗ Obstruction Point
— Project Depth Contour	★ Wrecks-Submerged
□ Borrow Area	★ Beacon, General
● Shoalest Sounding**	◆ Red Navigation Buoy
◆ Green Navigation Buoy	



NOTES:
 Horizontal Coordinate System: North American Datum of 1983 (NAD83), projected to the State Plane Coordinate System (SPCS), Louisiana South Zone. Distance units in U.S. Survey Feet.
 Vertical Datum: Soundings are shown in feet and indicate depths below Mean Lower Low Water (MLLW, 12-16). Datum Relationships for gage 01525 as of March 2020: 0.0' NAVD88, 2009.55 = -0.53' MLLW = 2.97' MLG
 Distances on the Mississippi River, above and below Head of Passes are shown at 1 mile intervals.
 The location of navigation aids are base on and provided by the U.S. Coast Guard.
 2016 Aerial Photography data source: Precision Aerial Reconnaissance, LLC (1998 DOQQ in green)
 Reference is N.O.A. Navigation Chart No. 11361.
 ** Shoalest Sounding per Quarter per Reach.
 *** High frequency (200 kHz) survey data represents the first signal return at a sounding location and will include suspended solids, known as "fluff", if present. Low frequency (24 kHz) survey data normally penetrates through this "fluff" layer to depict elevations of consolidated bottom material. Low frequency accuracies may vary depending on channel conditions and fathometer settings.

**DREDGE WHEELER
 DREDGING STATION 100+00 TO STATION 255+00
 FULL CHANNEL WIDTH SHEETS 5 & 6**

PILOT TOWN ANCHORAGE
 An area approximately 52 miles in length along the right descending bank or west side of the river. The east limit of the anchorage area at the upper end of the area is a point approximately 1,500 feet from the east bank at Mile 6.7 above Head of Passes and extends downstream generally by a point directly opposite the east bank line to a point directly opposite the east bank line at Mile 3.7 above Head of Passes, thence to a point 1,500 feet directly opposite Pilot Town Light at Mile 2.3 above Head of Passes, thence to a point 1,500 feet directly opposite Pilot Town Light at Mile 1.5 above Head of Passes, which is the downstream limit of the anchorage area.