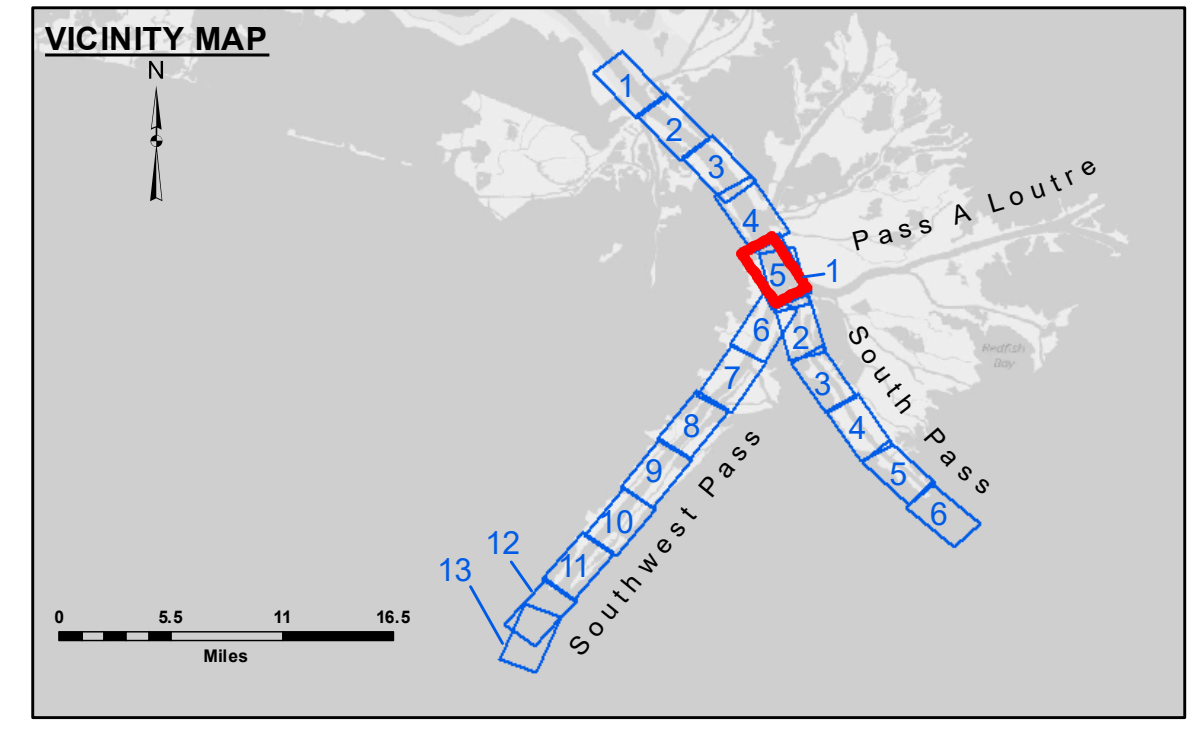


**DREDGE GLENN EDWARDS
DREDGING STATION 3070+00 TO STATION 130+00
FULL CHANNEL WIDTH SHEETS 5 & 6**

PILOT TOWN ANCHORAGE
An area approximately 5/2 miles in length along the right descending bank or west side of the river. The east limit of the anchorage area of the upper channel is at a point approximately 1,800 feet from the east bank at Mile 6.7 above Head of Passes and extends downriver generally by state lots and 1,600 feet from the east bank line to a point directly opposite Old Oat Landing Light at Mile 3.7 above Head of Passes, thence to a point 1,800 feet directly opposite Pilot Town Light at Mile 2.8 above Head of Passes, thence to a point 1,800 feet directly opposite Pilot Town Light at Mile 1.5 above Head of Passes, which is the downstream limit of the anchorage area.



LEGEND	
- - - Federal Navigation Channel	••• Cable Area
- Federal Navigation Center Line	▭ Placement Area
- - - As-built Pipeline/Cable	▭ Anchorage Area
••• Unconfirmed Pipeline/Cable	⊗ Obstruction Point
- - - Project Depth Contour	⊛ Wrecks-Submerged
▭ Borrow Area	★ Beacon, General
••• Shoalest Sounding**	◆ Red Navigation Buoy
••• Beacons	◆ Green Navigation Buoy

Gage Reading: -0.8 MLLW @ PILOT TOWN @ 1025
 Sea Conditions: CHOPPY
 Vessel Name: BEAUVAIS
 Survey Type: CONDITION, SB
 Sounding Frequency: LOW

Vertical Datum:
 North American Datum of 1983 (NAD83), projected to the State Plane Coordinate System (SPCS), Louisiana South Zone. Distance units in U.S. Survey Feet.
 Horizontal Datum:
 North American Datum of 1983 (NAD83), projected to the State Plane Coordinate System (SPCS), Louisiana South Zone. Distance units in U.S. Survey Feet.
 Vertical Datum:
 Soundings are shown in feet and indicate depths below Mean Lower Low Water (MLLW, 12-16).
 Datum Relationships for gage 01525 as of March 2020:
 0.0' NAVD88, 2009.55 = -0.53' MLLW = 2.97' MLG

Distances on the Mississippi River, above and below Head of Passes are shown at 1 mile intervals.

The location of navigation aids are based on and provided by the U.S. Coast Guard.

2016 Aerial Photography data source: Precision Aerial Reconnaissance, LLC (1998 DOQQ in green)

Reference is N.O.A. Navigation Chart No. 11361.

** Shoalest Sounding per Quarter per Reach.

*** High frequency (200 kHz) survey data represents the first signal return at a sounding location and will include suspended solids, known as "fluff", if present. Low frequency (24 kHz) survey data normally penetrates through this "fluff" layer to depict elevations of consolidated bottom material. Low frequency accuracies may vary depending on channel conditions and bathymeter settings.

**US Army Corps of Engineers
District: CEMVN**

DISCLAIMER
Access: Contractors, This United States Government furnishes these data and the recipient accepts and uses them with the express understanding that it is not intended for any purpose other than that for which it is issued. The user is responsible for the results obtained from the use of this information. The user is not to be held liable for any damages, losses or costs, including reasonable attorneys' fees, caused in whole or in part by the use of this information. The user is not to be held liable for any damages, losses or costs, including reasonable attorneys' fees, caused in whole or in part by the use of this information. The user is not to be held liable for any damages, losses or costs, including reasonable attorneys' fees, caused in whole or in part by the use of this information.

ACCESS STATEMENTS
The information depicted on the map represents the results of the survey conducted by the United States Government. This information is not to be used for any purpose other than that for which it is issued. The user is responsible for the results obtained from the use of this information. The user is not to be held liable for any damages, losses or costs, including reasonable attorneys' fees, caused in whole or in part by the use of this information.

Submitted:	Checked:
Recommended:	Checked:
Approved:	Checked:

Surveyed By: LLB & MGF
 Plotted By: TSS
 Checked By: MSK

U.S. ARMY CORPS OF ENGINEERS
NEW ORLEANS DISTRICT

**MISSISSIPPI RIVER - B.R. TO GULF
SOUTHWEST PASS - SHEET 5
SW_05_SWP_20220325_CS
25 March 2022**

**Sheet Reference
Number
5 of 13**

Revision Number:
4.2-20220420