

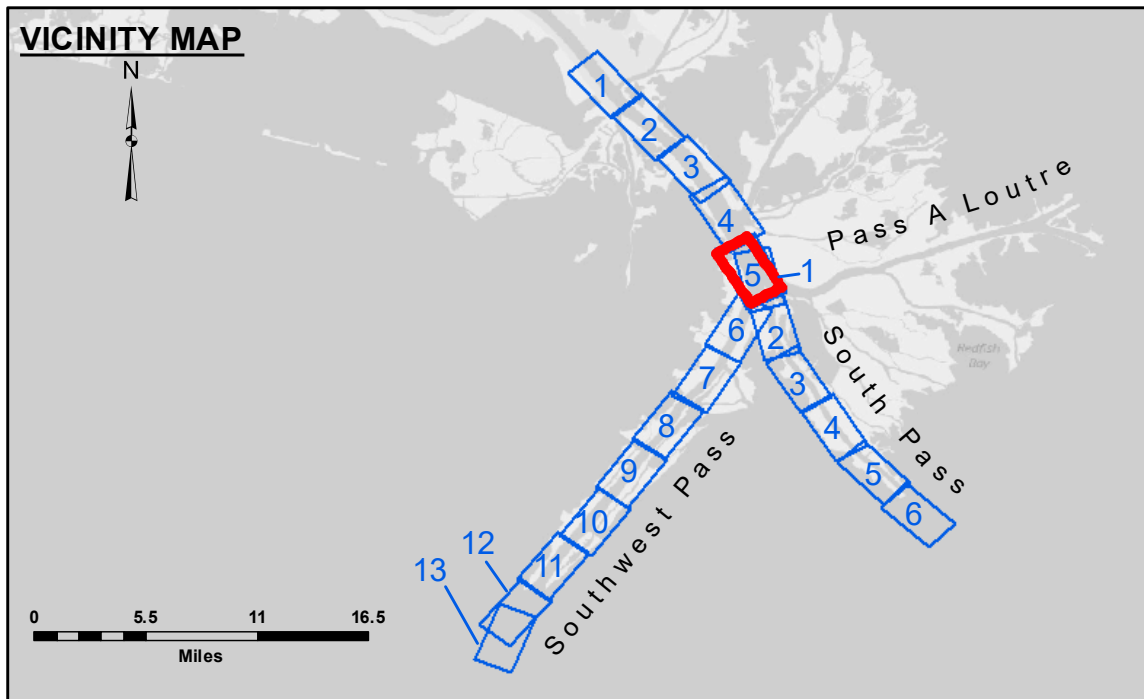
Accession: The United States Government furnishes these data and the recipient accepts and uses them with the express understanding that the data are not to be used for any purpose other than that for which they were originally prepared, or implied concerning the accuracy, completeness, reliability, usability, or suitability for any particular purpose of the recipient. The user is responsible for the results of any use of the data. The user is not to be held liable for any damage or injury, under no liability whatsoever to any person by reason of any use of the data. These data are being made available to the public under the authority of the U.S. Government. The recipient may not transfer these data to others without also transferring the disclaimer. The information depicted on the map represents the results of a survey conducted by the Corps of Engineers and is not to be considered to represent the general condition existing at that time.

Submitted:	Checked By:
Recommended:	MSK
Approved:	
Surveyed By:	JH & RCC
Plotted By:	RSL

MISSISSIPPI RIVER - B.R. TO GULF
SOUTHWEST PASS - SHEET 5
SW_05_SWP_20220613_CS
13 June 2022

Sheet Reference Number
5 of 13

Revision Number:
 4.2-202 (04/20)



LEGEND	
--- Federal Navigation Channel	● Cable Area
— Federal Navigation Center Line	□ Placement Area
— As-built Pipeline/Cable	□ Anchorage Area
..... Unconfirmed Pipeline/Cable	⊗ Obstruction Point
— Project Depth Contour	★ Wrecks-Submerged
□ Borrow Area	★ Beacon, General
● Shoalest Sounding**	◆ Red Navigation Buoy
■ -10' and above	◆ Green Navigation Buoy
■ -10' to -20'	
■ -20' to -30'	
■ -30' to -40'	
■ -40' to -45'	
■ -45' to -50'	
■ -50' to -55'	
■ -55' and below	

Gage Reading: 1.0 MLLW @ PILOT TOWN @ 1145

Sea Conditions: CALM

Vessel Name: BEAUVAIS

Survey Type: CONDITION, SB

Sounding Frequency*:** LOW

Vertical Datum: North American Datum of 1983 (NAD83), projected to the State Plane Coordinate System (SPCS), Louisiana South Zone. Distance units in U.S. Survey Feet.

Datum Relationships for gage 01525 as of March 2020:
 0.0' NAVD88, 2009.55 = -0.53' MLLW = 2.97' MLG

Vertical Datum: Soundings are shown in feet and indicate depths below Mean Lower Low Water (MLLW, 12-16).
 Distances on the Mississippi River, above and below Head of Passes are shown at 1 mile intervals.

The location of navigation aids are base on and provided by the U.S. Coast Guard.

2016 Aerial Photography data source: Precision Aerial Reconnaissance, LLC (1998 DOQQ in green)

Reference is N.O.A. Navigation Chart No. 11361.

**** Shoalest Sounding per Quarter per Reach.**

***** High frequency (200 kHz) survey data represents the first signal return at a sounding location and will include suspended solids, known as "fluff", if present. Low frequency (24 kHz) survey data normally penetrates through this "fluff" layer to depict elevations of consolidated bottom material. Low frequency accuracies may vary depending on channel conditions and fathometer settings.**

Sheet 6

Sheet 4

Sheet 5